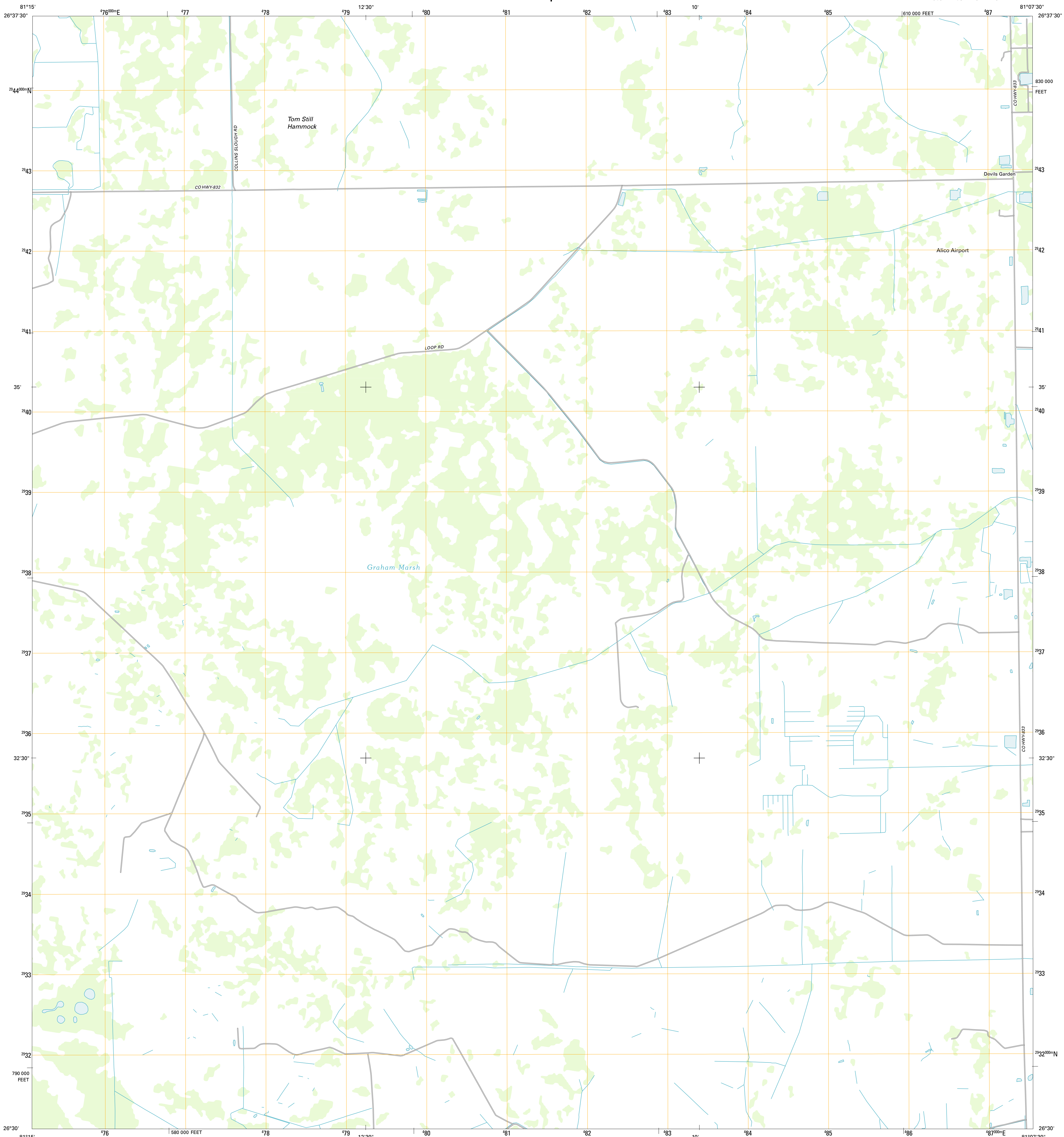




U.S. DEPARTMENT OF THE INTERIOR
U. S. GEOLOGICAL SURVEY

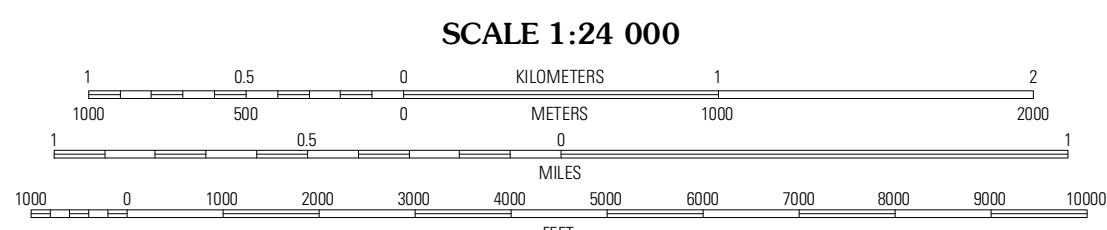
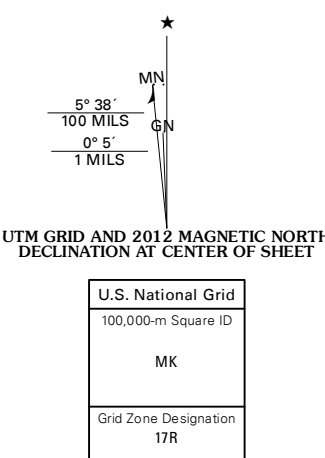


GRAHAM MARSH QUADRANGLE
FLORIDA-HENDRY CO.
7.5-MINUTE SERIES



Produced by the United States Geological Survey
North American Datum of 1983 (NAD83)
World Geodetic System of 1984 (WGS84). Projection and
1000-meter grid: Universal Transverse Mercator, Zone 17R
10 000-foot ticks: Florida Coordinate System of 1983 (east
zone)

Imagery.....NAP, April 2010
Roads.....©2006-2011 TomTom
Names.....GNIS, 2011
Hydrography.....National Hydrography Dataset, 2010
Contours.....Not Available
Boundaries.....Census, IBWC, IBC, USGS, 1972 - 2010



CONTOURS NOT PRESENT BECAUSE AVAILABLE ELEVATION
DATA DO NOT MEET ACCURACY REQUIREMENTS

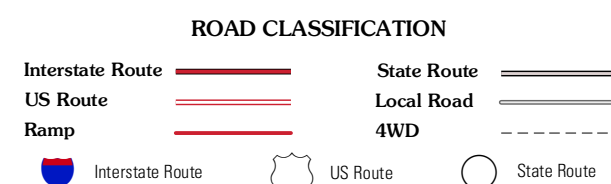
This map was produced to conform with the
National Geospatial Program US Topo Product Standard, 2011.
A metadata file associated with this product is draft version 0.6.3



QUADRANGLE LOCATION

Felda NE	Grassy Marsh	Hog Cypress
Felda SE	Graham Marsh	Devils Garden Slough
Immokalee NE	Crows Nest Hammock	Rocky Lake Strand

ADJOINING 7.5' QUADRANGLES



GRAHAM MARSH, FL
2012