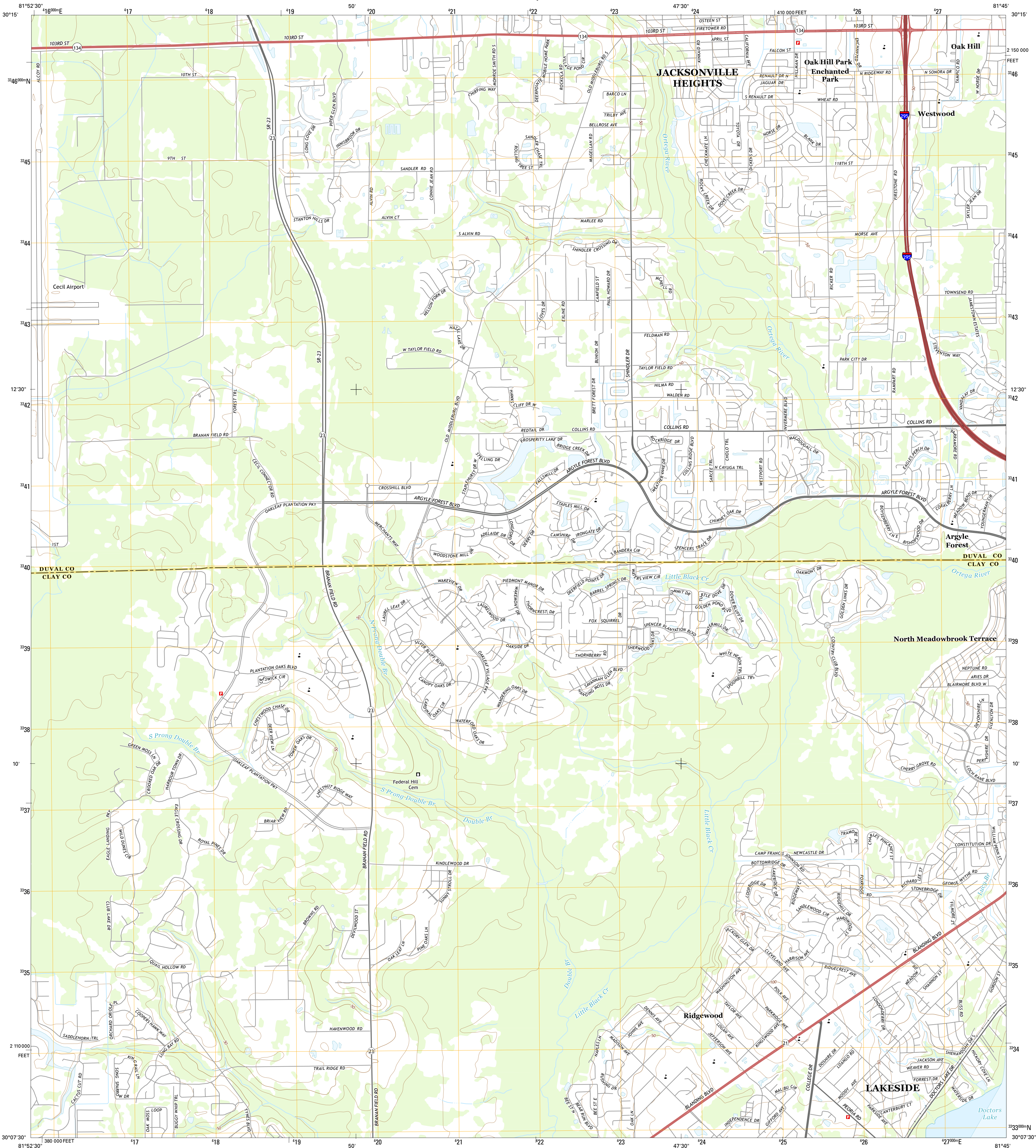




U.S. DEPARTMENT OF THE INTERIOR  
U.S. GEOLOGICAL SURVEY

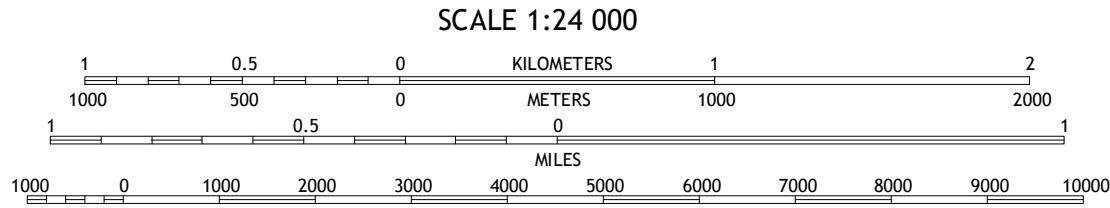
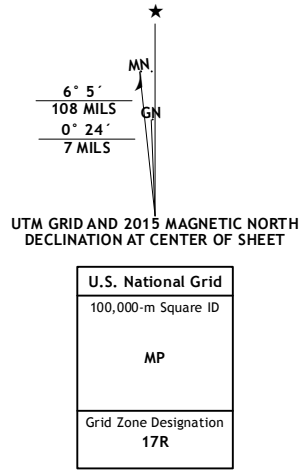


JACKSONVILLE HEIGHTS QUADRANGLE  
FLORIDA  
7.5-MINUTE SERIES



Produced by the United States Geological Survey  
North American Datum of 1983 (NAD83)  
World Geodetic System of 1984 (WGS84). Projection and  
1 000-meter grid: Universal Transverse Mercator, Zone 17R  
10 000-foot ticks: Florida Coordinate System of 1983 (east zone)  
This map is not a legal document. Boundaries may be  
generalized for this map scale. Private lands within government  
reservations may not be shown. Obtain permission before  
entering private lands.

Imagery.....NAIP, October 2013  
Roads.....HERE, ©2013 - 2014  
Names.....National Hydrography Dataset, 2013  
Hydrography.....National Elevation Dataset, 1999  
Contours.....Multiple sources; see metadata file 1972 - 2015  
Public Land Survey System.....BLM, 2015



CONTOUR INTERVAL 10 FEET  
NORTH AMERICAN VERTICAL DATUM OF 1988  
This map was produced to conform with the  
National Geospatial Program US Topo Product Standard, 2011.  
A metadata file associated with this product is draft version 0.6.18



ROAD CLASSIFICATION  
Expressway  
Secondary Hwy  
Ramp  
Local Connector  
Local Road  
4WD  
Interstate Route  
US Route  
State Route

1	2	3	1 Baldwin
4	5	2 Marietta	
6	7	3 Jacksonville	
		4 Fiftone	
		5 Orange Park	
		6 Middleburg SW	
		7 Middleburg	
		8 Fleming Island	

JACKSONVILLE HEIGHTS, FL  
2015

