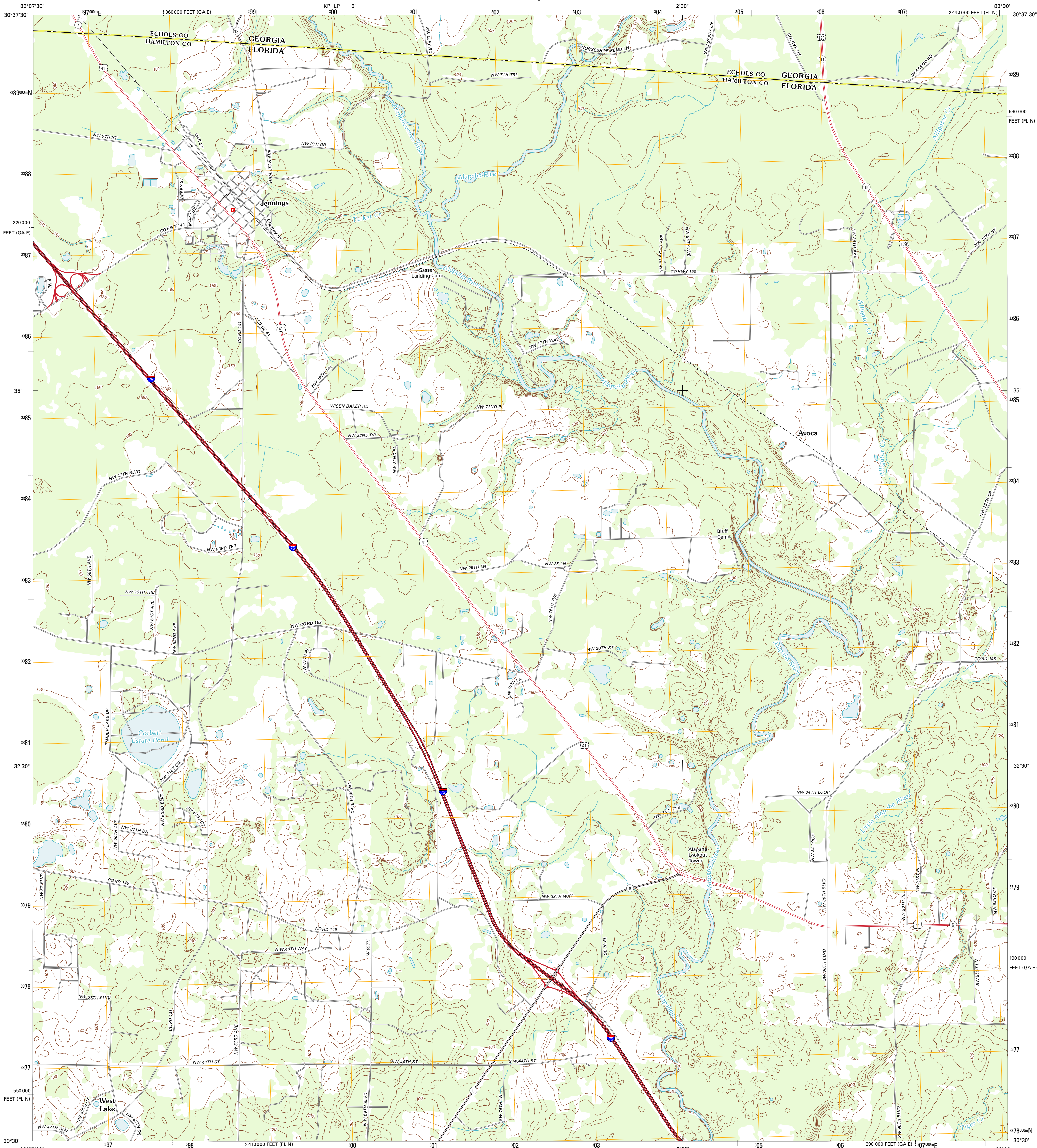




U.S. DEPARTMENT OF THE INTERIOR
U. S. GEOLOGICAL SURVEY



JENNINGS QUADRANGLE
FLORIDA-GEORGIA
7.5-MINUTE SERIES



Produced by the United States Geological Survey
North American Datum of 1983 (NAD83)
World Geodetic System of 1984 (WGS84). Projection and
1 000-meter grid: Universal Transverse Mercator, Zone 17R
10 000-foot ticks: Florida Coordinate System of 1983 (north
zone), Georgia Coordinate System of 1983 (east zone)

Images:.....NAIP, June 2010
Roads:.....©2006-2011 TomTom
Names:.....GNIS, 2011
Hydrography:.....National Hydrography Dataset, 2010
Contours:.....National Elevation Dataset, 2012
Boundaries:.....Census, IBWC, IBC, USGS, 1972 - 2010

UTM GRID and 2012 MAGNETIC NORTH
DECLINATION AT CENTER OF SHEET

U.S. National Grid
100,000-m Square ID
17R
KP LP
Grid Zone Designation
17R

SCALE 1:24 000

1 0.5 0 0.5 1 2
KILOMETERS

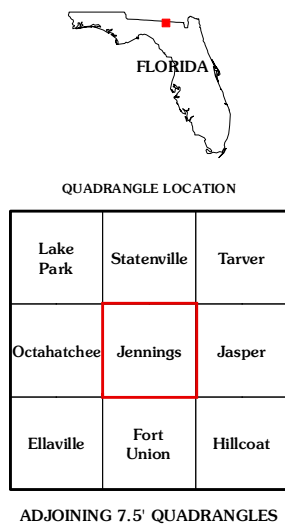
1000 500 0 500 1000 2000
METERS

1 0.5 0 0.5 1 2
MILES

1000 0 1000 2000 3000 4000 5000 6000 7000 8000 9000 10000
FEET

CONTOUR INTERVAL 10 FEET
NORTH AMERICAN VERTICAL DATUM OF 1988

This map was produced to conform with the
National Geospatial Program US Topo Product Standard, 2011.
A metadata file associated with this product is draft version 0.6.3



ROAD CLASSIFICATION

Interstate Route	State Route
US Route	Local Road
Ramp	4WD

Interstate Route US Route State Route

JENNINGS, FL-GA
2012