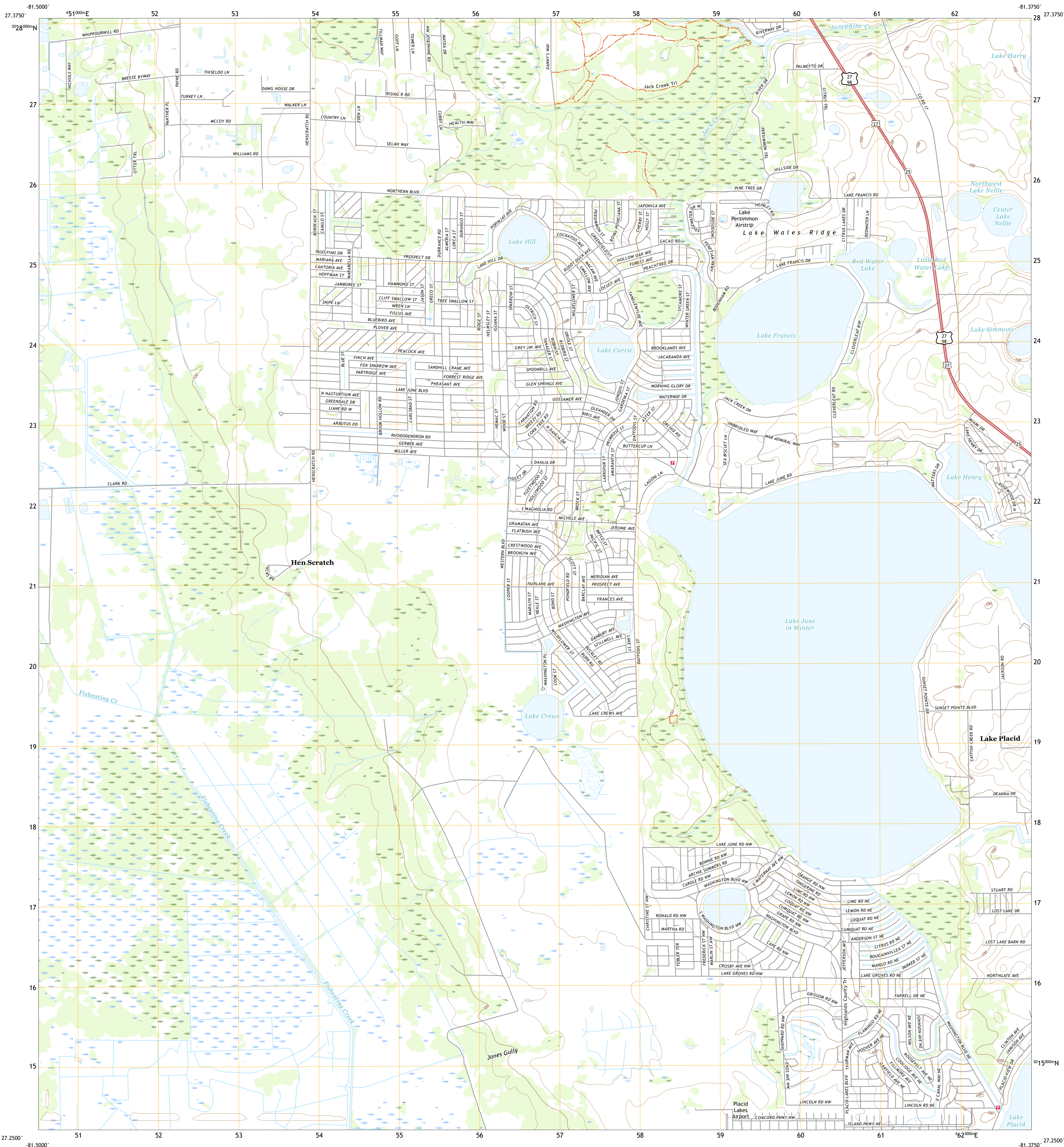




U.S. DEPARTMENT OF THE INTERIOR
U.S. GEOLOGICAL SURVEY

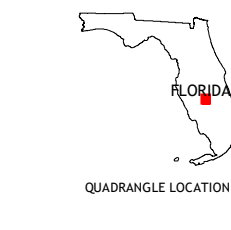
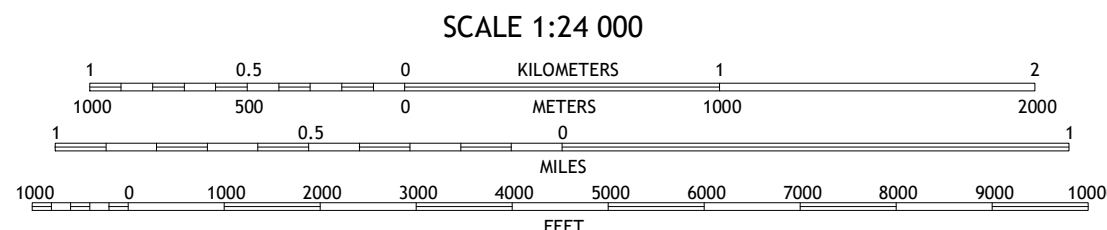
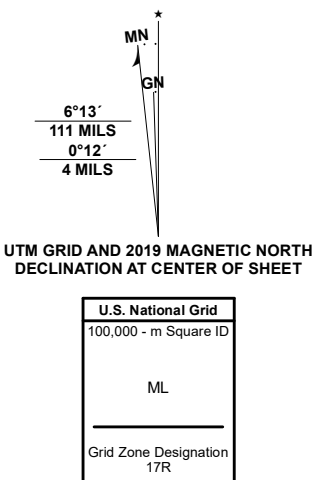


LAKE JUNE IN WINTER QUADRANGLE
FLORIDA - HIGHLANDS COUNTY
7.5-MINUTE SERIES



Produced by the United States Geological Survey
North American Datum of 1983 (NAD83)
World Geodetic System of 1984 (WGS84). Projection and
1 000-meter grid/Universal Transverse Mercator, Zone 17R.
This map is not a legal document. Boundaries may be
generalized for this map scale. Private lands within government
reservations may not be shown. Obtain permission before
entering private lands.

Imagery.....	NAIP,	November	2019
Roads.....	U.S. Census Bureau,	2016	
Names.....	GNIS,	1979	2020
Hydrography.....	National Hydrography Dataset,	2003	2019
Contours.....	National Elevation Dataset,	2012	
Boundaries.....	Multiple sources: see metadata file	2018	2019
Public Land Survey System.....	BLM,	2020	
Wetlands.....	FWS National Wetlands Inventory	2010	



1	2	3
4	5	6
7	8	

ADJOINING QUADRANGLES

- 1 Crewsville
- 2 Sebring
- 3 Lorida
- 4 Crewsville SE
- 5 Lake Placid
- 6 Long Island Marsh NE
- 7 Venus NW
- 8 Childs

ROAD CLASSIFICATION	
Expressway	Local Connector
Secondary Hwy	Local Road
Ramp	4WD
Interstate Route	US Route
	State Route

LAKE JUNE IN WINTER, FL
2021

