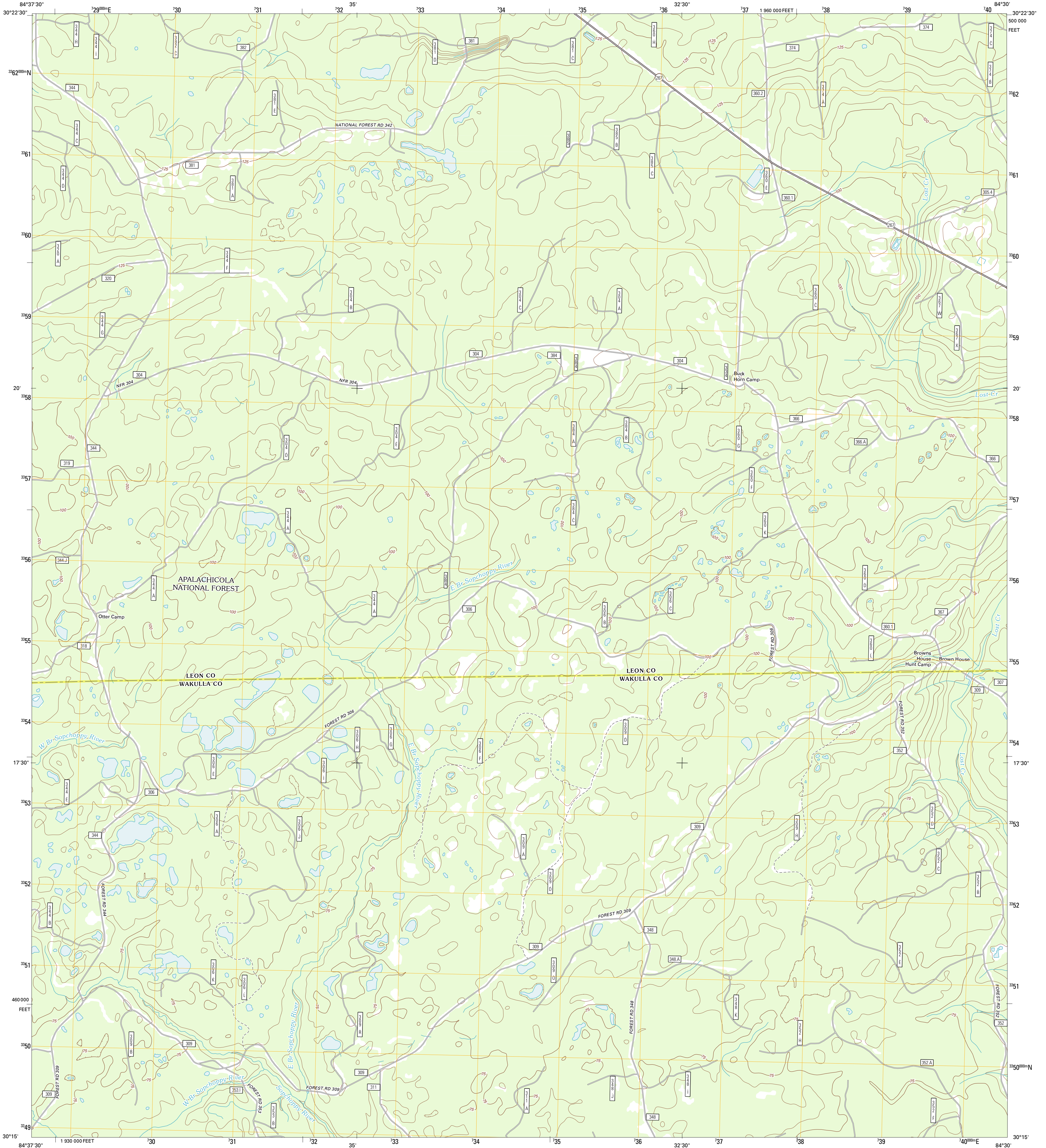




U.S. DEPARTMENT OF THE INTERIOR  
U. S. GEOLOGICAL SURVEY

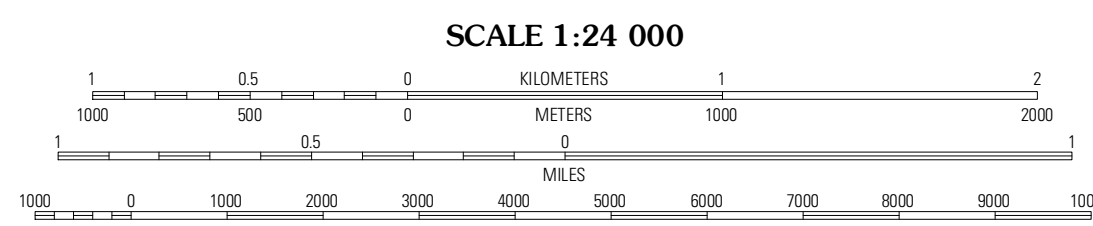
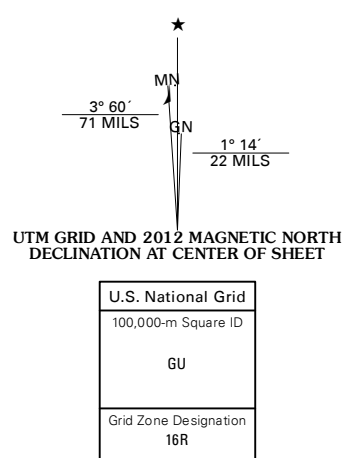


LAKE TALQUIN SE QUADRANGLE  
FLORIDA  
7.5-MINUTE SERIES



Produced by the United States Geological Survey  
North American Datum of 1983 (NAD83)  
World Geodetic System of 1984 (WGS84). Projection and  
1 000-meter grid: Universal Transverse Mercator, Zone 16R  
10 000-foot ticks: Florida Coordinate System of 1983 (north  
zone)

Imagery.....N.A.P., September 2010  
Roads.....2006-2011 TomTom  
Roads within US Forest Service Lands.....FSTopo Data  
with limited Forest Service updates, 2009  
Names.....GNIS, 2011  
Hydrography.....National Hydrography Dataset, 2010  
Contours.....National Elevation Dataset, 2011  
Boundaries.....Census, IBWC, IBC, USGS, 1972 - 2010



CONTOUR INTERVAL 10 FEET  
NORTH AMERICAN VERTICAL DATUM OF 1988

This map was produced to conform with the  
National Geospatial Program US Topo Product Standard, 2011.  
A metadata file associated with this product is draft version 0.6.3



QUADRANGLE LOCATION

Blocham	Lake Talquin	Midway
Ward	Lake Talquin SE	Hillardville
Smith Creek	Bradwell Bay	Crawfordville West

ADJOINING 7.5' QUADRANGLES

**ROAD CLASSIFICATION**

Interstate Route	State Route
US Route	Local Road
Ramp	4WD
Interstate Route	US Route
FS Primary Route	FS Passenger Route
	FS High Clearance Route

Check with local Forest Service unit  
for current travel conditions and restrictions.

LAKE TALQUIN SE, FL  
2012