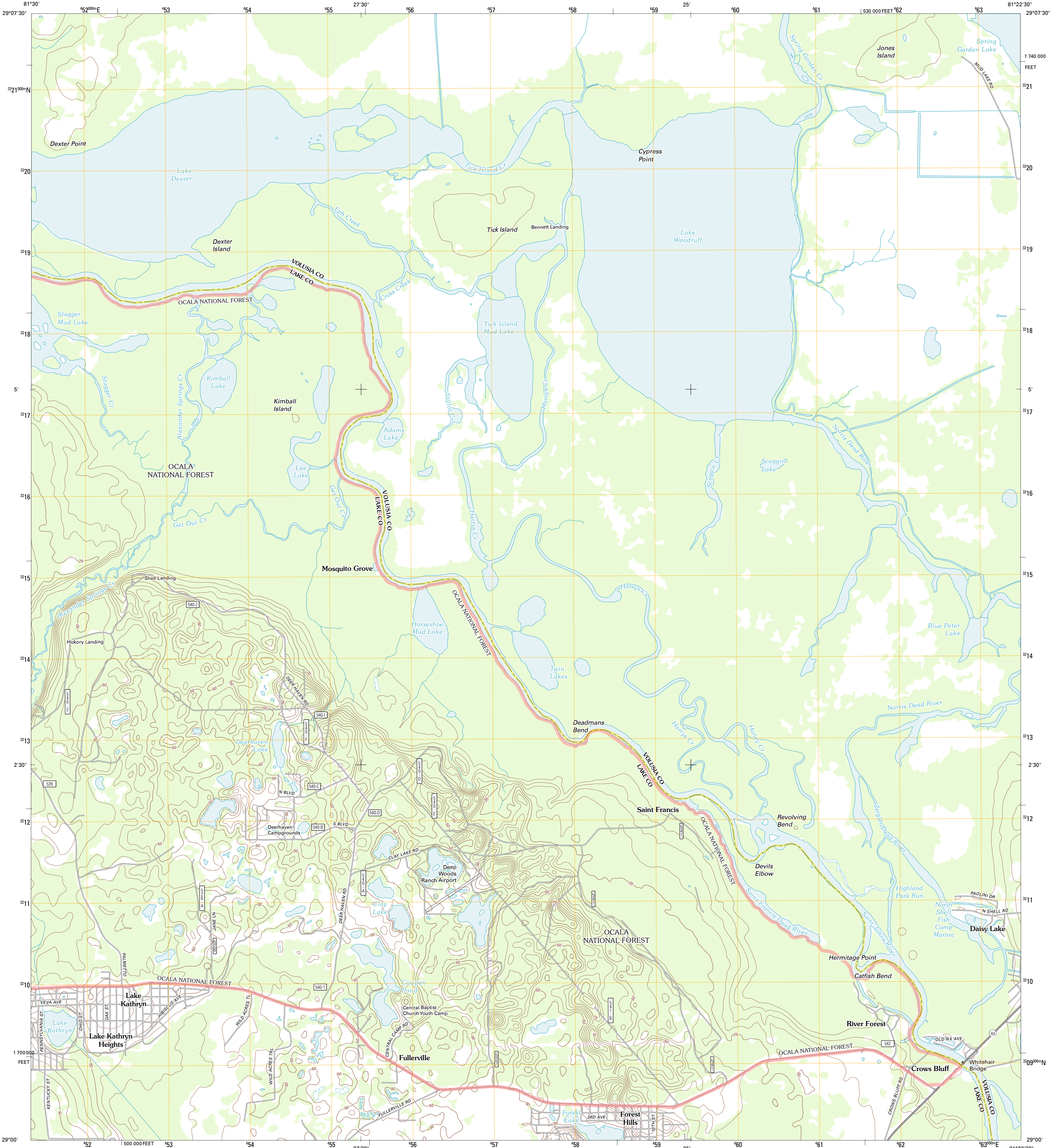




U.S. DEPARTMENT OF THE INTERIOR
U. S. GEOLOGICAL SURVEY

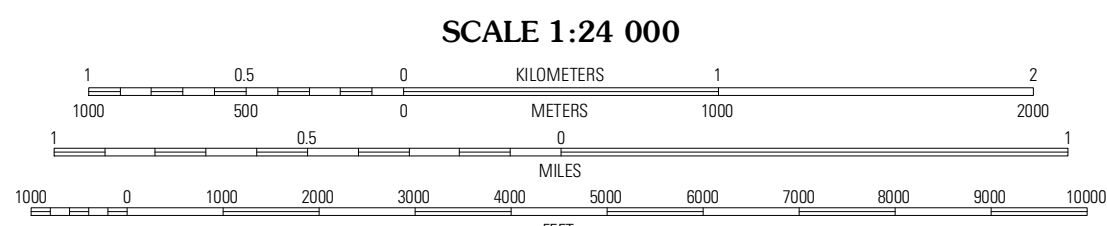
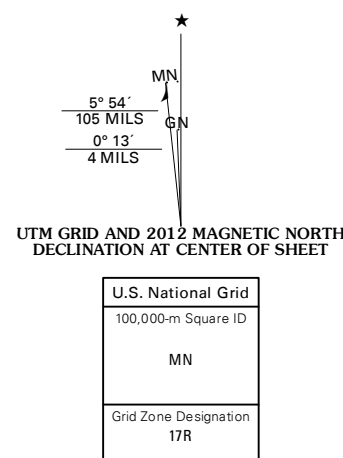


LAKE WOODRUFF QUADRANGLE
FLORIDA
7.5-MINUTE SERIES



Produced by the United States Geological Survey
North American Datum of 1983 (NAD83)
World Geodetic System of 1984 (WGS84). Projection and
1 000-meter grid: Universal Transverse Mercator, Zone 17R
10 000-foot ticks: Florida Coordinate System of 1983 (east
zone)

Imagery: NAD, May 2010
Roads: ©2006-2011 TomTom
Roads within US Forest Service Lands: FSTopo Data
with limited Forest Service updates, 2009
Names: GNIS, 2011
Hydrography: National Hydrography Dataset, 2010
Contours: National Elevation Dataset, 2009
Boundaries: Census, IBWC, IBC, USGS, 1972 - 2010

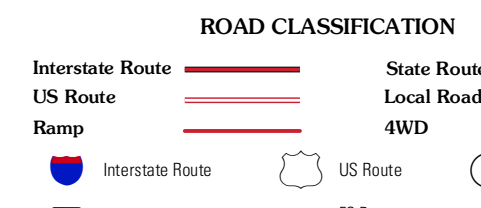


CONTOUR INTERVAL 5 FEET
NORTH AMERICAN VERTICAL DATUM OF 1988
This map was produced to conform with the
National Geospatial Program US Topo Product Standard, 2011.
A metadata file associated with this product is draft version 0.6.3



QUADRANGLE LOCATION

Astor	Person	Lake Dix
Alexander Springs	Lake Woodruff	Deland
Paisley	Pine Lakes	Orange City



Check with local Forest Service unit
for current travel conditions and restrictions.

LAKE WOODRUFF, FL
2012

ADJOINING 7.5 QUADRANGLES