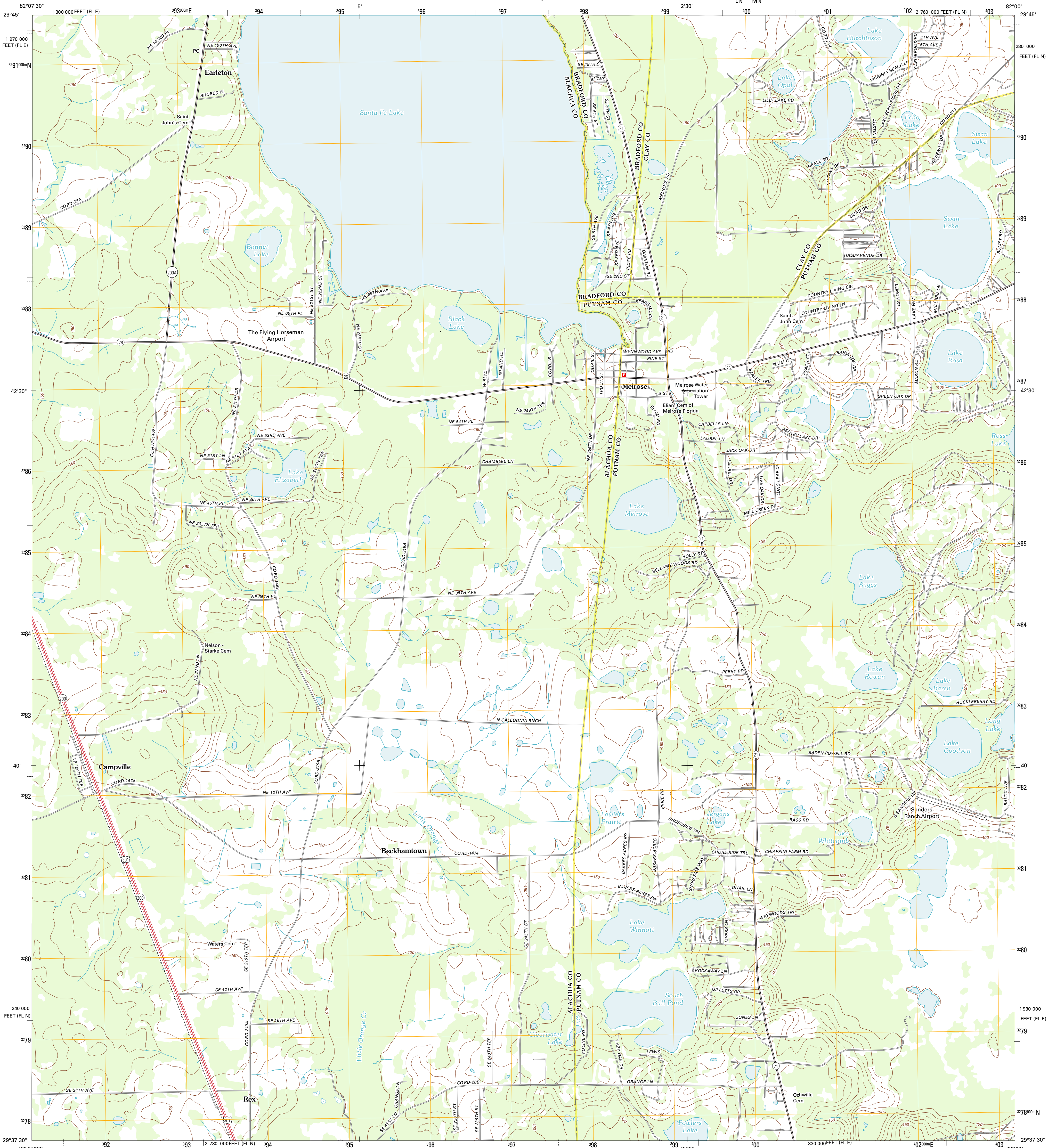




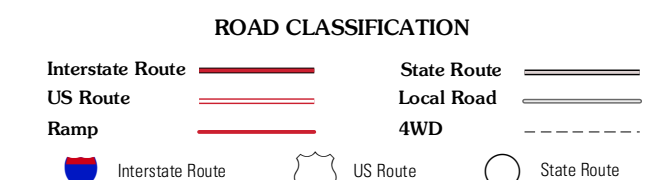
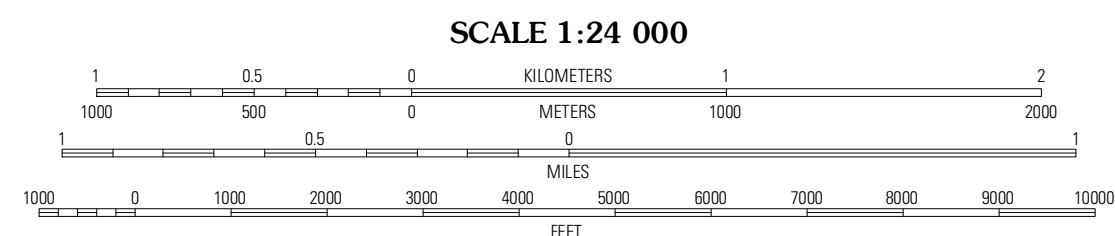
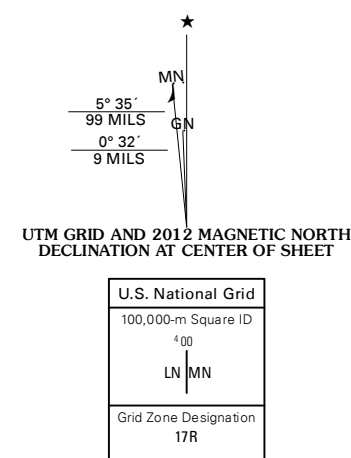
U.S. DEPARTMENT OF THE INTERIOR  
U. S. GEOLOGICAL SURVEY



MELROSE QUADRANGLE  
FLORIDA  
7.5-MINUTE SERIES



Produced by the United States Geological Survey  
North American Datum of 1983 (NAD83)  
World Geodetic System of 1984 (WGS84). Projection and  
1 000-meter grid: Universal Transverse Mercator, Zone 17R  
10 000-foot ticks: Florida Coordinate System of 1983 (north  
and east zones)



Imagery: NAD, June 2010  
Roads: ©2006-2011 TomTom  
Names: GNIS, 2011  
Hydrography: National Hydrography Dataset, 2010  
Contours: National Elevation Dataset, 2012  
Boundaries: Census, IBWC, IBC, USGS, 1972 - 2010

CONTOUR INTERVAL 10 FEET  
NORTH AMERICAN VERTICAL DATUM OF 1988  
This map was produced to conform with the  
National Geospatial Program US Topo Product Standard, 2011.  
A metadata file associated with this product is draft version 0.6.3

ADJOINING 7.5 QUADRANGLES		
Waldo	Keystone Heights	Gold Head Branch
Orange Heights	Melrose	Putnam Hall
Rochelle	Hawthorne	Keuka

MELROSE, FL  
2012