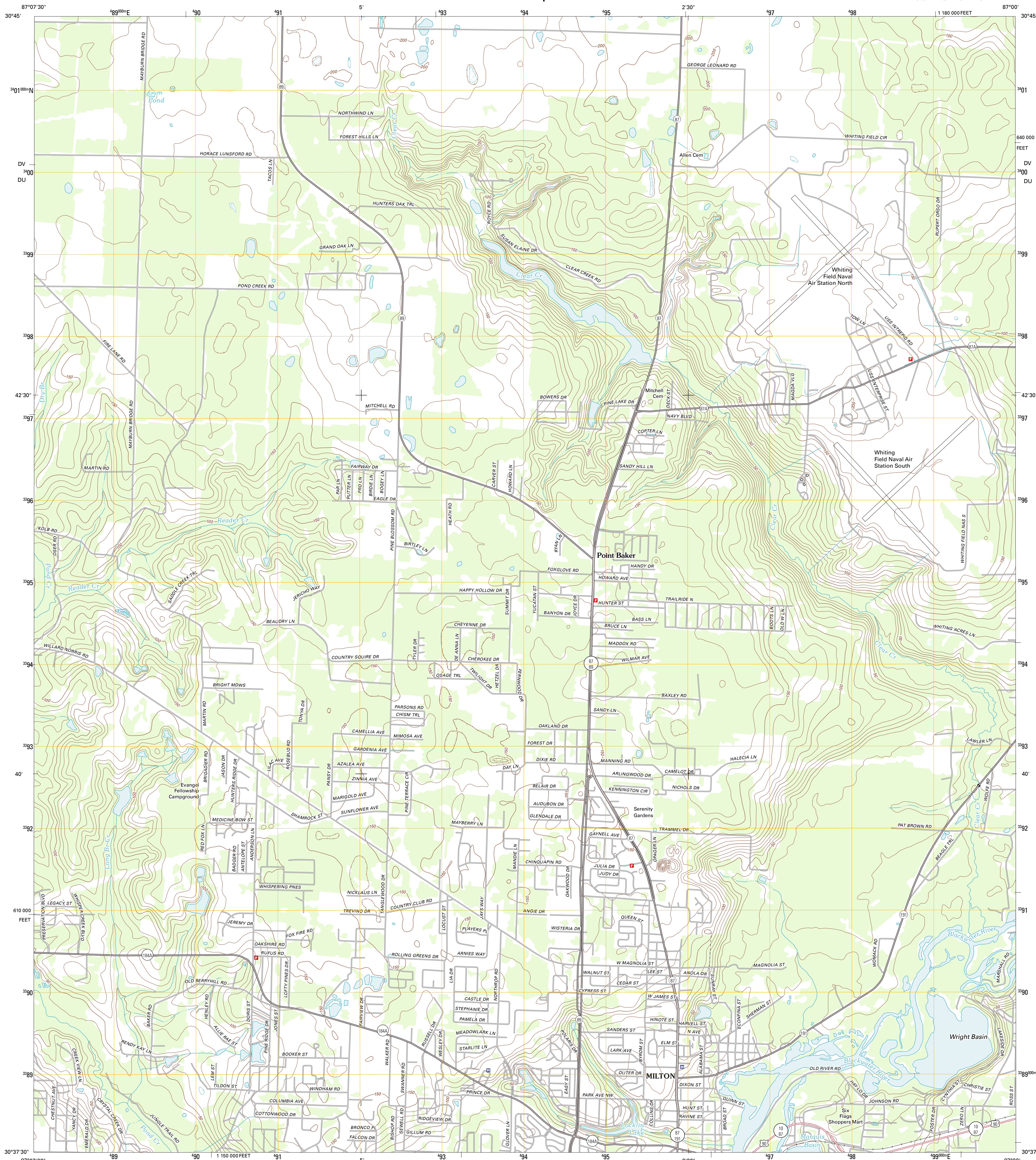




U.S. DEPARTMENT OF THE INTERIOR
U. S. GEOLOGICAL SURVEY



MILTON NORTH QUADRANGLE
FLORIDA-SANTA ROSA CO.
7.5-MINUTE SERIES

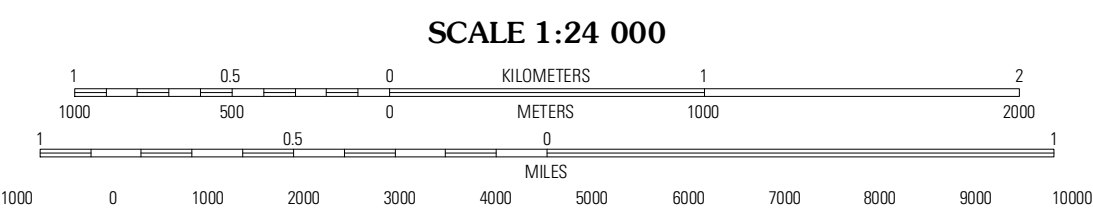


Produced by the United States Geological Survey
North American Datum of 1983 (NAD83)
World Geodetic System of 1984 (WGS84) Projection and
1 000-meter grid: Universal Transverse Mercator, Zone 16R
10 000-foot ticks: Florida Coordinate System of 1983 (north zone)

Images: NAIP, September 2010
Roads: ©2006-2011 TomTom
Names: GNS, 2011
Hydrography: National Hydrography Dataset, 2010
Contours: National Elevation Dataset, 2009
Boundaries: Census, IBWC, IBC, USGS, 1972-2010

UTM GRID AND 2012 MAGNETIC NORTH DECLINATION AT CENTER OF SHEET

U.S. National Grid	100,000-m Square Grid
DV	DU
92	16R
Grid Zone Designation	16R



CONTOUR INTERVAL 10 FEET
NORTH AMERICAN VERTICAL DATUM OF 1988

This map was produced to conform with the National Geospatial Program US Topo Product Standard, 2011. A metadata file associated with this product is draft version 0.6.3



ROAD CLASSIFICATION

Interstate Route	State Route
US Route	Local Road
Ramp	4WD
Interstate Route	US Route
	State Route

QUADRANGLE LOCATION

Chumuckla	Allentown	Spring Hill
Wallace	Milton North	Harold
Pace	Milton South	Ward Basin

ADJOINING 7.5' QUADRANGLES

MILTON NORTH, FL
2012