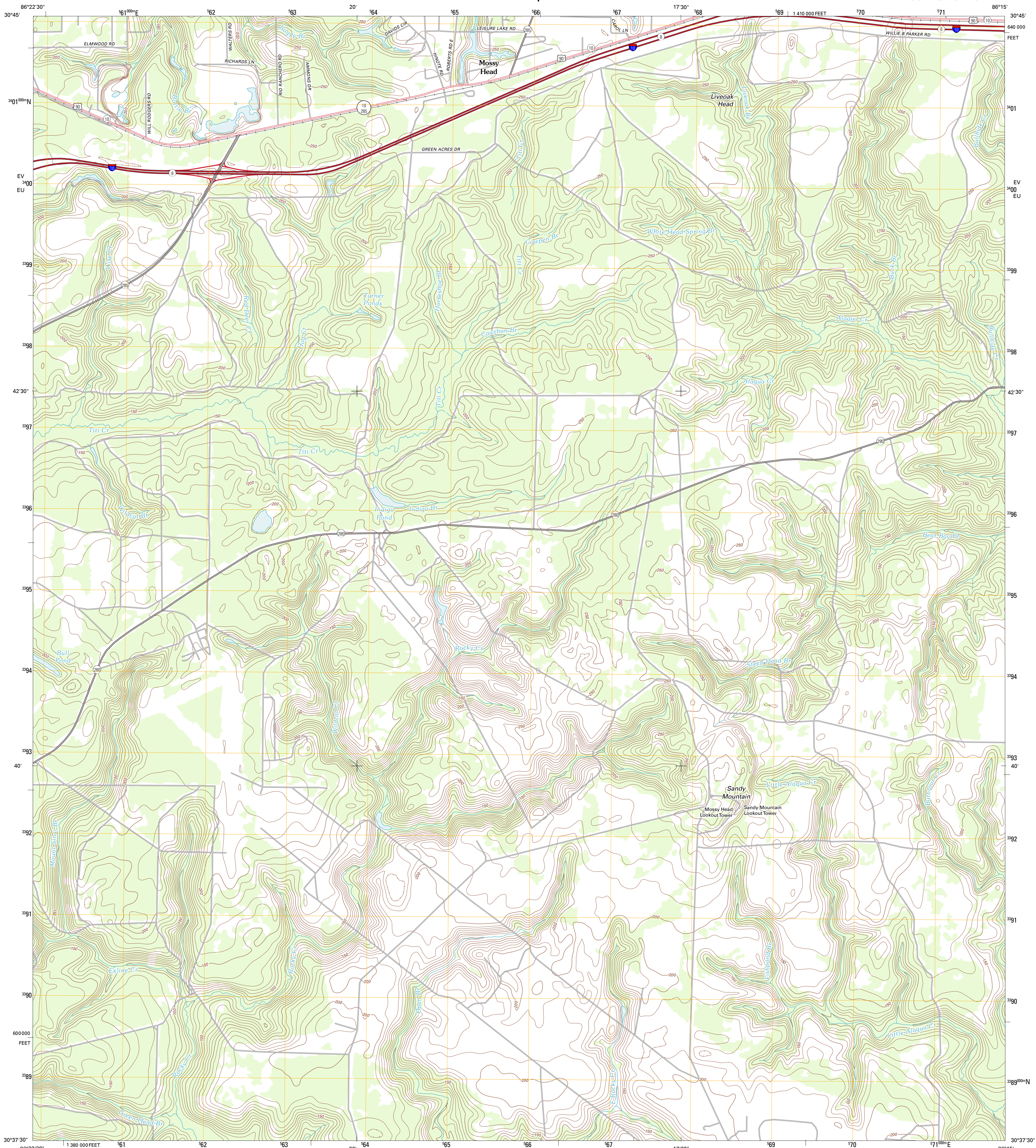




U.S. DEPARTMENT OF THE INTERIOR  
U. S. GEOLOGICAL SURVEY

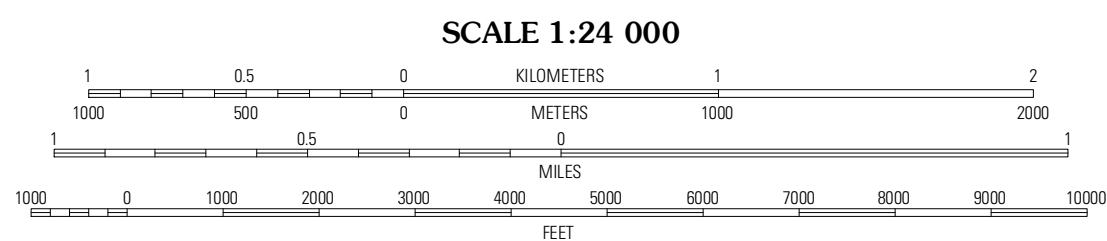
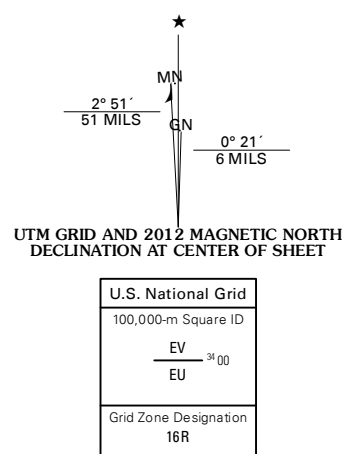


MOSSY HEAD QUADRANGLE  
FLORIDA-WALTON CO.  
7.5-MINUTE SERIES



Produced by the United States Geological Survey  
North American Datum of 1983 (NAD83)  
World Geodetic System of 1984 (WGS84) Projection and  
1 000-meter grid: Universal Transverse Mercator, Zone 16R  
10 000-foot ticks: Florida Coordinate System of 1983 (north  
zone)

Images: NAIP, September 2010  
Roads: ©2006-2011 TomTom  
Names: GNS, 2011  
Hydrography: National Hydrography Dataset, 2010  
Contours: National Elevation Dataset, 2012  
Boundaries: Census, IBWC, IBC, USGS, 1972 - 2010

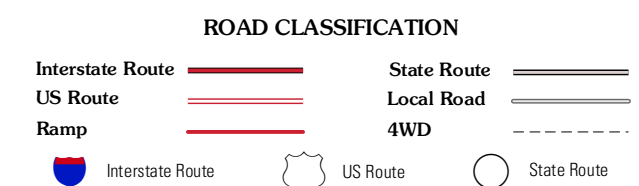


SCALE 1:24 000  
CONTOUR INTERVAL 10 FEET  
NORTH AMERICAN VERTICAL DATUM OF 1988  
This map was produced to conform with the  
National Geospatial Program US Topo Product Standard, 2011.  
A metadata file associated with this product is draft version 0.6.3



QUADRANGLE LOCATION

Dorcas	New Harmony	Liberty
Spencer Flats	Mossy Head	De Funiak Springs West
Niceville	Niceville SE	Portland



MOSSY HEAD, FL  
2012