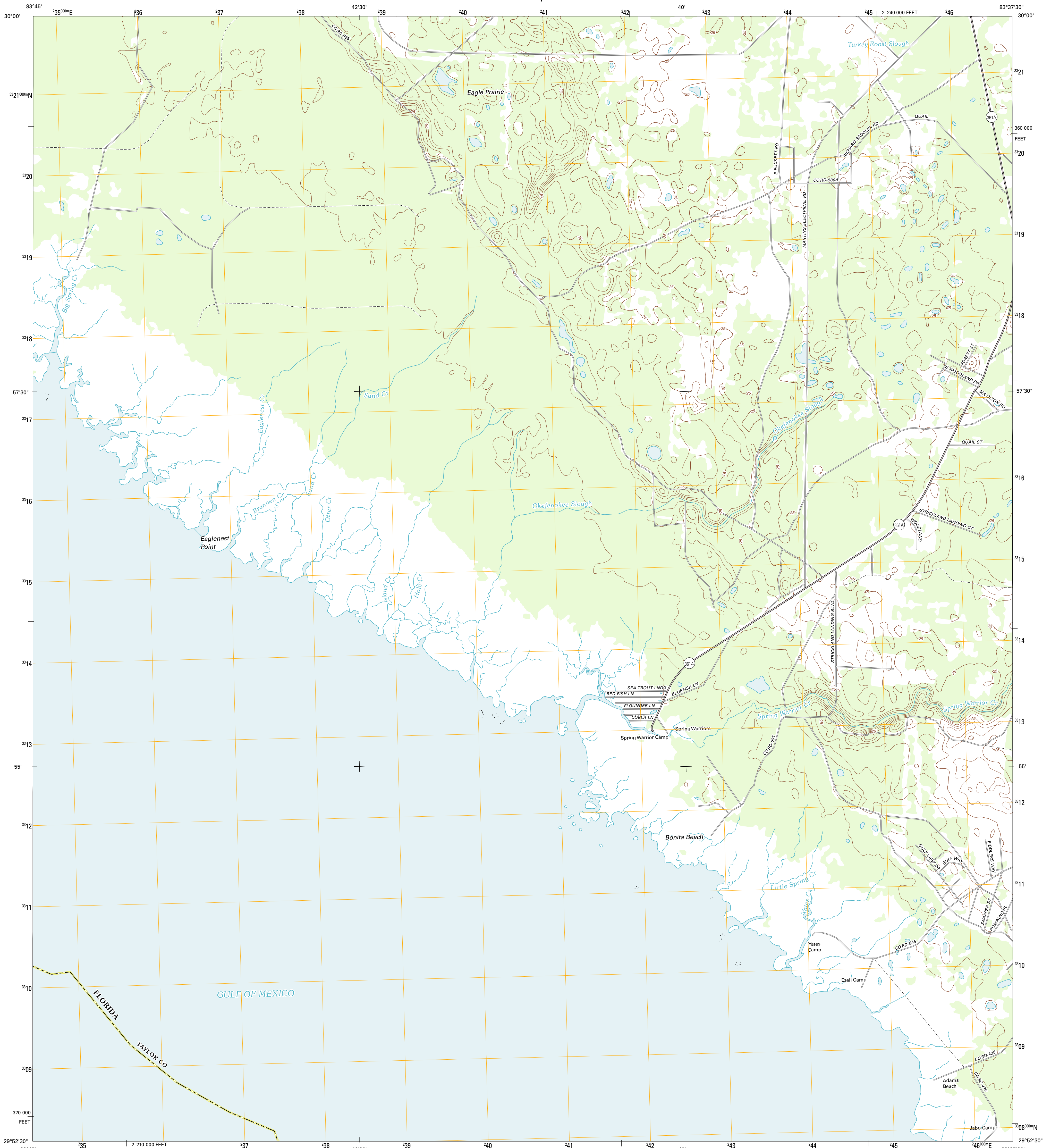




U.S. DEPARTMENT OF THE INTERIOR  
U. S. GEOLOGICAL SURVEY

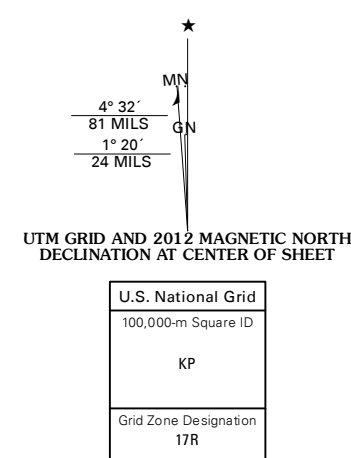


OKEFENOKEE SLOUGH QUADRANGLE  
FLORIDA-TAYLOR CO.  
7.5-MINUTE SERIES

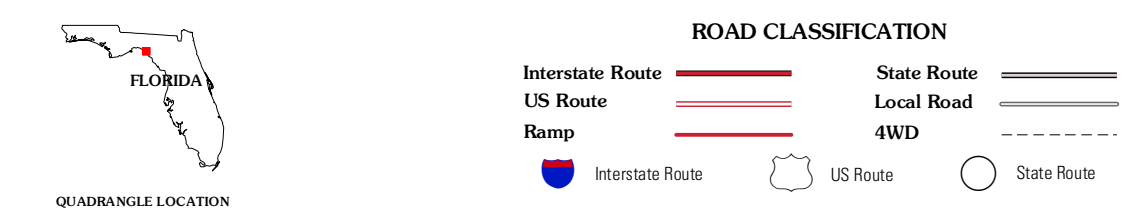


Produced by the United States Geological Survey  
North American Datum of 1983 (NAD83)  
World Geodetic System of 1984 (WGS84). Projection and  
1 000-meter grid: Universal Transverse Mercator, Zone 17R  
10 000-foot ticks: Florida Coordinate System of 1983 (north  
zone)

Imagery.....NAIP, September 2010  
Roads.....G2006-2011 TomTom  
Names.....GNIS, 2011  
Hydrography.....National Hydrography Dataset, 2010  
Contours.....National Elevation Dataset, 2011  
Boundaries.....Census, IBWC, IBC, USGS, 1972 - 2010



This map was produced to conform with the  
National Geospatial Program US Topo Product Standard, 2011.  
A metadata file associated with this product is draft version 0.6.3



QUADRANGLE LOCATION

Maclin Hammock	Hampton Springs	Perry
Rock Islands	Okefenokee Slough	Warrior Swamp
	Keaton Beach OE W	Keaton Beach

ADJOINING 7.5' QUADRANGLES

OKEFENOKEE SLOUGH, FL  
2012