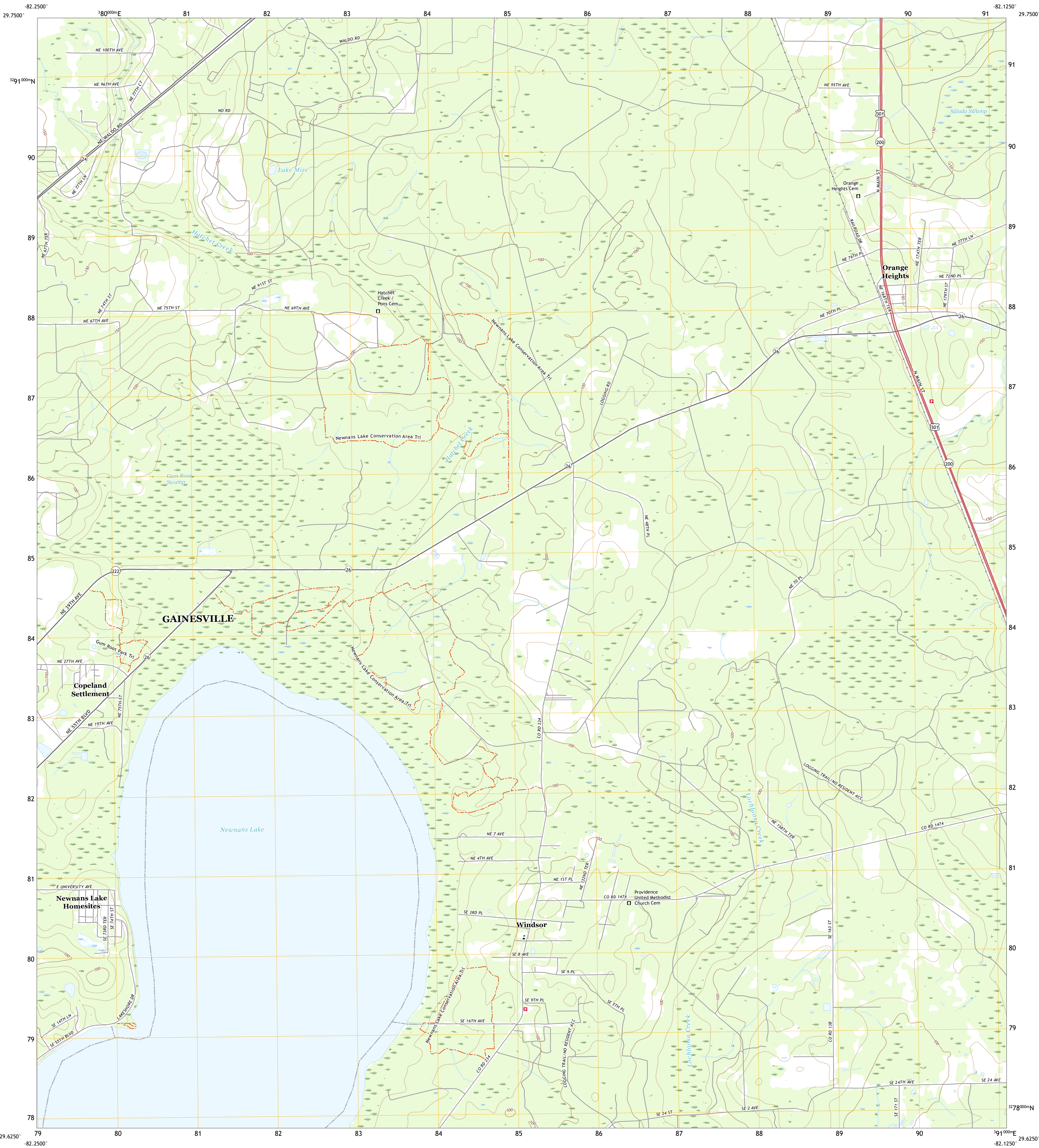




U.S. DEPARTMENT OF THE INTERIOR
U.S. GEOLOGICAL SURVEY



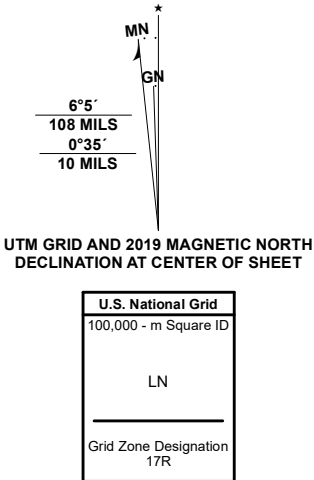
ORANGE HEIGHTS QUADRANGLE
FLORIDA - ALACHUA COUNTY
7.5-MINUTE SERIES



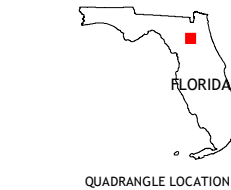
Produced by the United States Geological Survey

North American Datum of 1983 (NAD83)
World Geodetic System of 1984 (WGS84), Projection and
1 000-meter grid/Universal Transverse Mercator, Zone 17R
This map is not a legal document. Boundaries may be
generalized for this map scale. Private lands within government
reservations may not be shown. Obtain permission before
entering private lands.

Imagery.....	U.S. Census Bureau, 2019
Roads.....	U.S. Census Bureau, 2016
Names.....	GNIS, 1979 - 2020
Hydrography.....	National Hydrography Dataset, 1899 - 2020
Contours.....	National Elevation Dataset, 2012 - 2018
Boundaries.....	Multiple sources: see metadata file, 2018 - 2019
Public Land Survey System.....	BLM, 2020
Wetlands.....	FWS National Wetlands Inventory, 1984



CONTOUR INTERVAL 10 FEET
NORTH AMERICAN VERTICAL DATUM OF 1988
This map was produced to conform with the
National Geospatial Program US Topo Product Standard.



1	2	3
4	5	6
7	8	9

- 1 Montecchia
- 2 Waldo
- 3 Keystone Heights
- 4 Gainesville East
- 5 Melrose
- 6 Micanopy
- 7 Rachelle
- 8 Hawthorne

ROAD CLASSIFICATION	
Expressway	Local Connector
Secondary Hwy	Local Road
Ramp	4WD
Interstate Route	US Route
	State Route

ORANGE HEIGHTS, FL
2021

