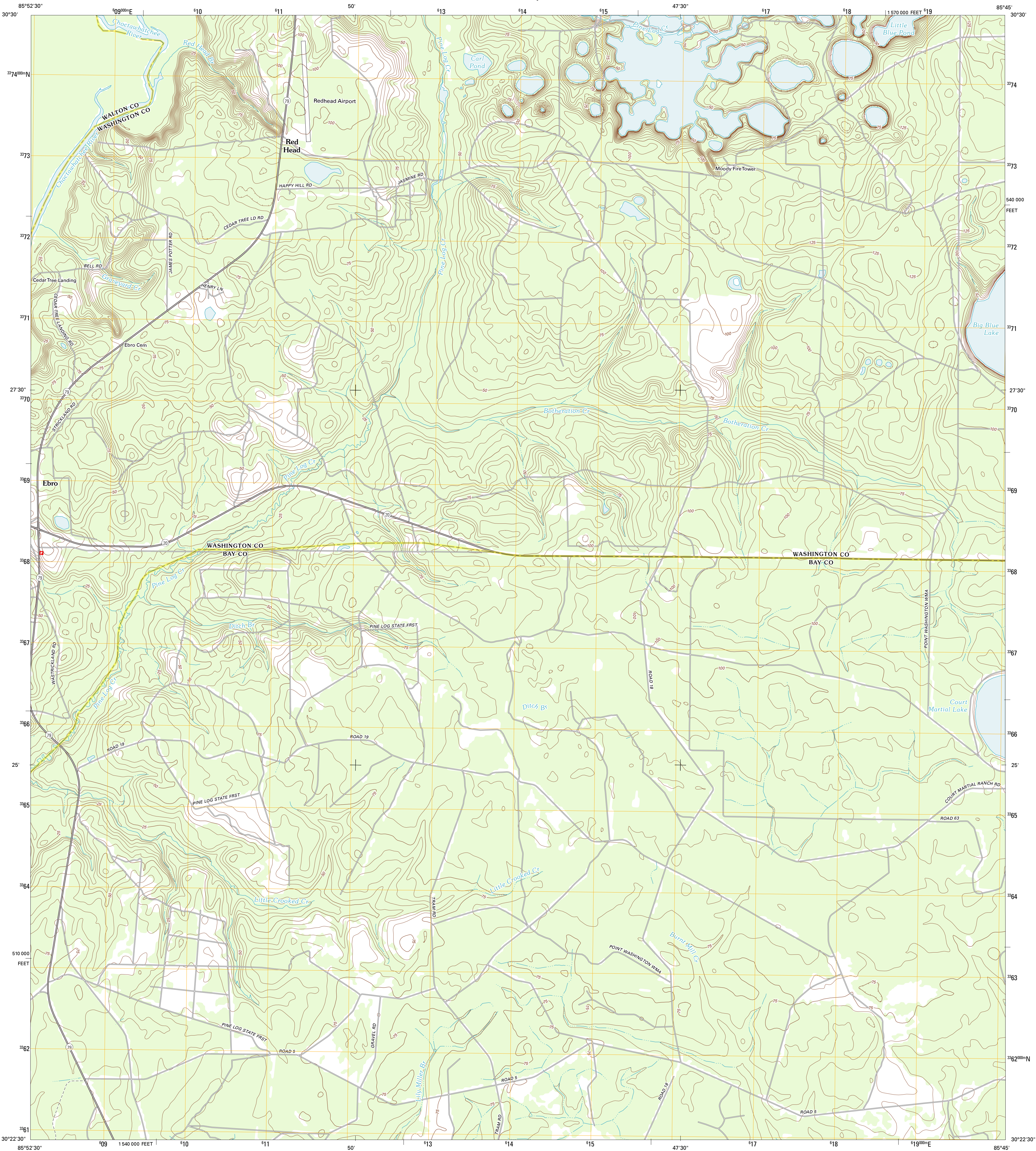




U.S. DEPARTMENT OF THE INTERIOR
U. S. GEOLOGICAL SURVEY

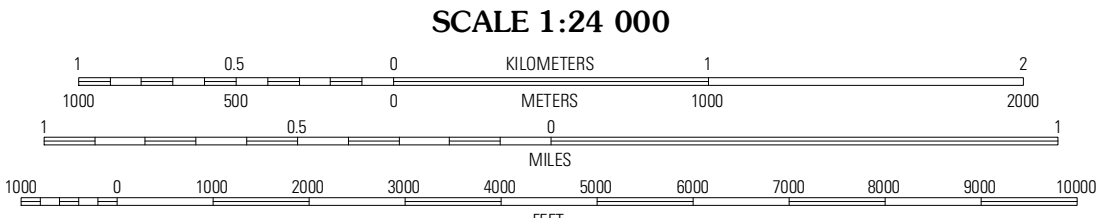
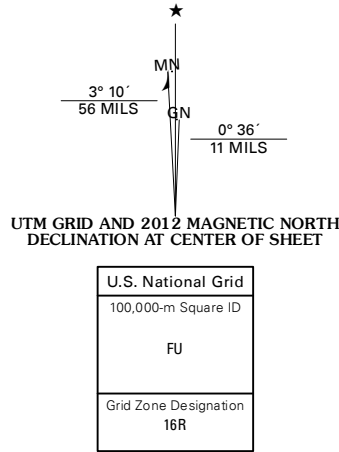


RED HEAD QUADRANGLE
FLORIDA
7.5-MINUTE SERIES



Produced by the United States Geological Survey
North American Datum of 1983 (NAD83)
World Geodetic System of 1984 (WGS84) Projection and
1 000-meter grid; Universal Transverse Mercator, Zone 16R
10 000-foot ticks: Florida Coordinate System of 1983 (north zone)

Imagery.....NAIP, September 2010
Roads.....©2006-2011 TomTom
Names.....GNIS, 2011
Hydrography.....National Hydrography Dataset, 2010
Contours.....National Elevation Dataset, 2011
Boundaries.....Census, IBWC, IBC, USGS, 1972 - 2010

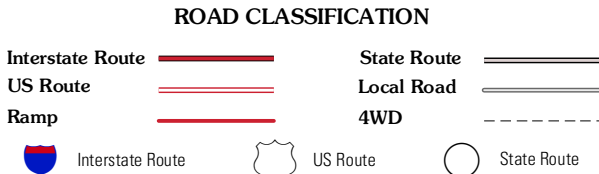


CONTOUR INTERVAL 5 FEET
NORTH AMERICAN VERTICAL DATUM OF 1988
This map was produced to conform with the
National Geospatial Program US Topo Product Standard, 2011.
A metadata file associated with this product is draft version 0.6.3



| | | |
|----------------|---------------|--------------|
| Redbay | Millers Ferry | Vernon |
| Bruce | Red Head | Crystal Lake |
| Seminole Hills | West Bay | Southport |

ADJOINING 7.5' QUADRANGLES



RED HEAD, FL
2012