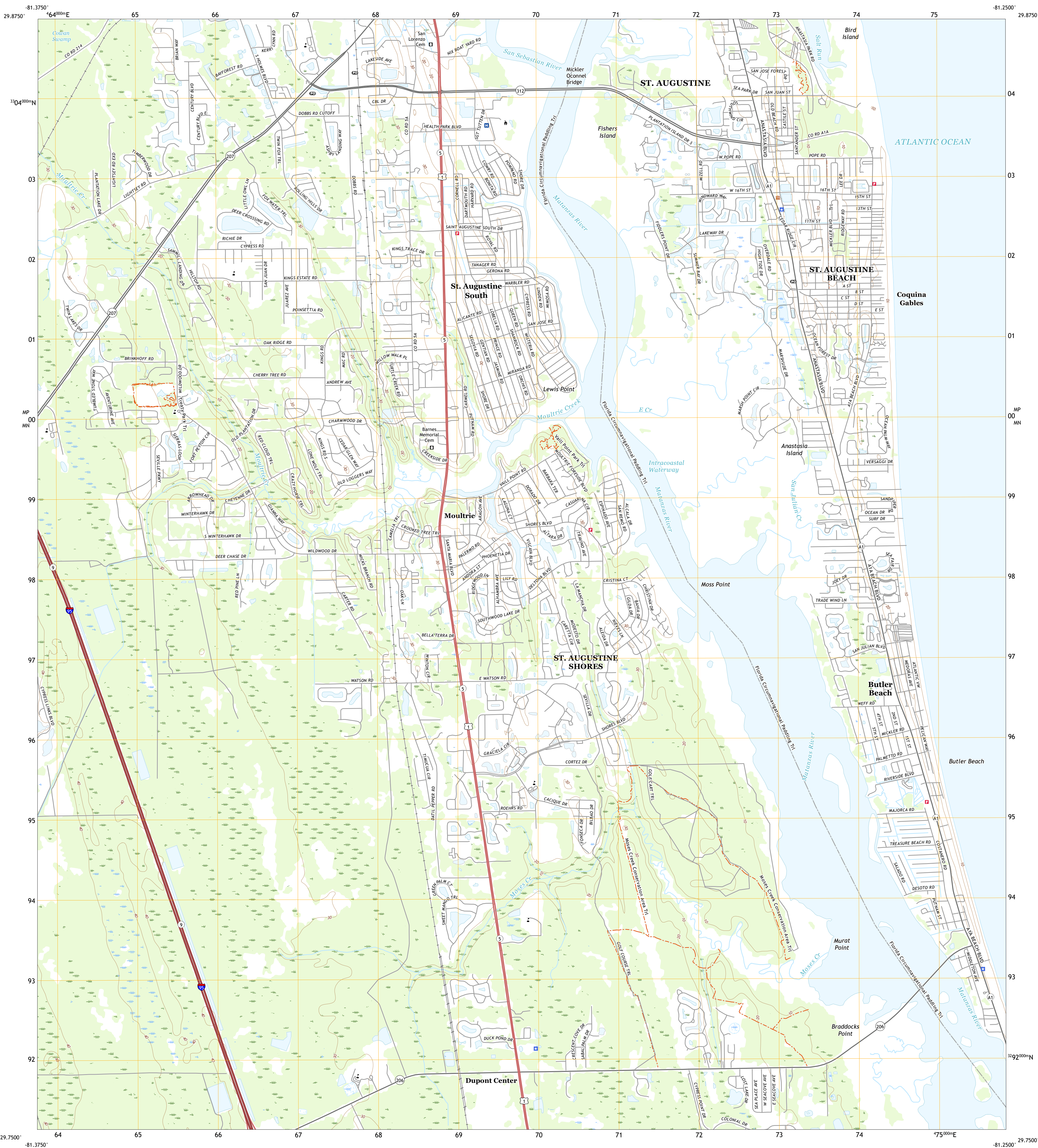




U.S. DEPARTMENT OF THE INTERIOR  
U.S. GEOLOGICAL SURVEY



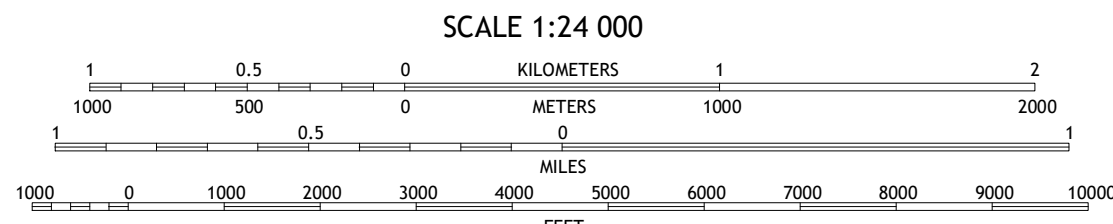
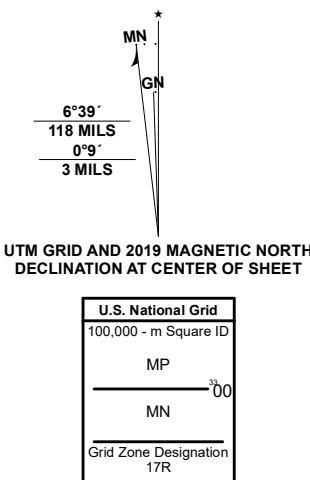
SAINT AUGUSTINE BEACH QUADRANGLE  
FLORIDA - SAINT JOHNS COUNTY  
7.5-MINUTE SERIES



Produced by the United States Geological Survey

North American Datum of 1983 (NAD83)  
World Geodetic System of 1984 (WGS84) Projection and  
1 000-meter grid/Universal Transverse Mercator, Zone 17R  
This map is not a legal document. Boundaries may be  
generalized for this map scale. Private lands within government  
reservations may not be shown. Obtain permission before  
entering private lands.

Imagery	U.S. NAIP	November 2019
Roads	U.S. Census Bureau	2016
Names	GNIS	1979 - 2020
Hydrography	National Hydrography Dataset	2003 - 2019
Contours	National Elevation Dataset	2003 - 2012
Boundaries	Multiple sources: see metadata file	2018 - 2019
Public Land Survey System	BLM	2020
Wetlands	FWS National Wetlands Inventory	1983 - 2015



CONTOUR INTERVAL 10 FEET  
NORTH AMERICAN VERTICAL DATUM OF 1988  
This map was produced to conform with the  
National Geospatial Program US Topo Product Standard.



1	2
3	4
5	6
7	

1 Bakersville  
2 Saint Augustine  
3 Elkton  
4 Saint Augustine Beach OE E  
5 Squids  
6 Dinner Island NE  
7 Matanzas Inlet

ROAD CLASSIFICATION	
Expressway	Local Connector
Secondary Hwy	Local Road
Ramp	4WD
Interstate Route	US Route
	State Route

SAINT AUGUSTINE BEACH, FL

2021

