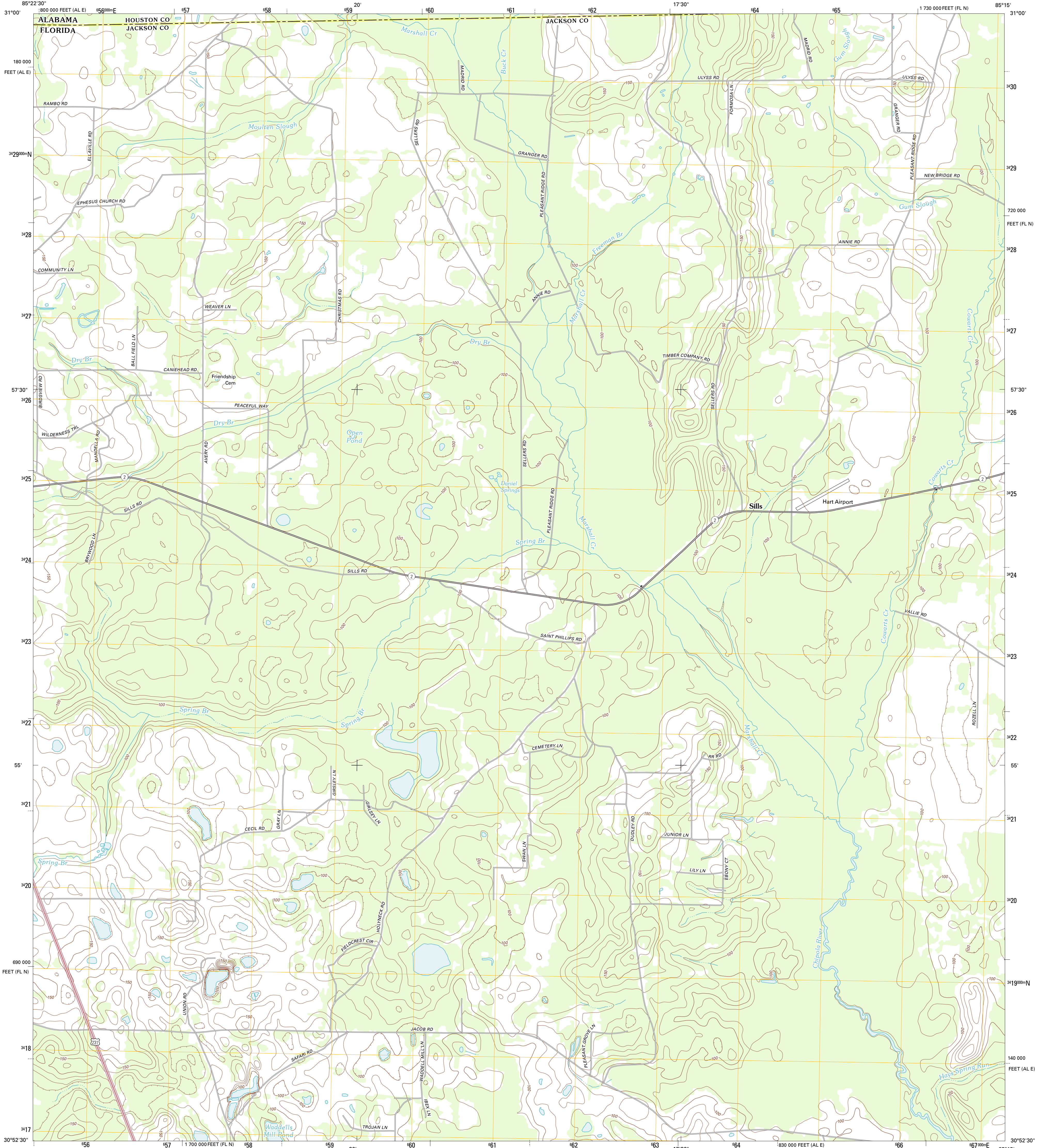




U.S. DEPARTMENT OF THE INTERIOR  
U. S. GEOLOGICAL SURVEY

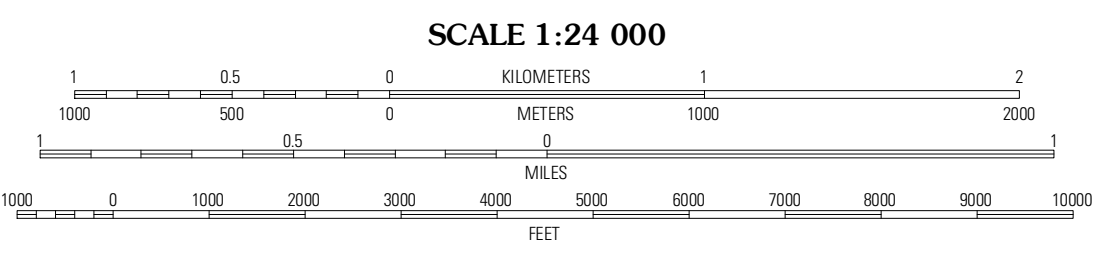
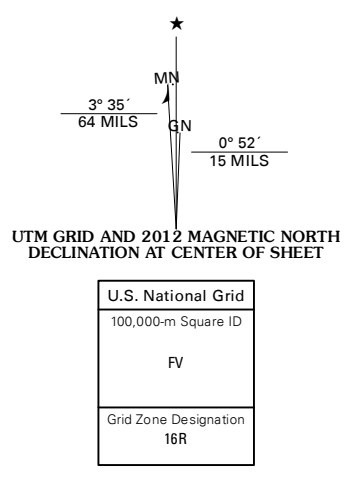


SILLS QUADRANGLE  
FLORIDA-ALABAMA  
7.5-MINUTE SERIES



Produced by the United States Geological Survey  
North American Datum of 1983 (NAD83)  
World Geodetic System of 1984 (WGS84). Projection and  
1 000-meter grid: Universal Transverse Mercator, Zone 16R  
10 000-foot ticks: Florida Coordinate System of 1983 (north  
zone), Alabama Coordinate System of 1983 (east zone)

Imagery: NADP, September 2010  
Roads: ©2006-2011 TomTom  
Names: GNSI, 2011  
Hydrography: National Hydrography Dataset, 2010  
Contours: National Elevation Dataset, 2009  
Boundaries: Census, IBWC, IBC, USGS, 1972 - 2010



CONTOUR INTERVAL 10 FEET  
NORTH AMERICAN VERTICAL DATUM OF 1988

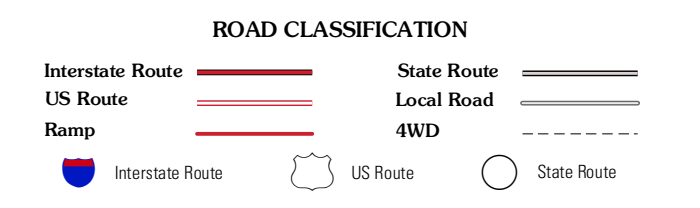
This map was produced to conform with the  
National Geospatial Program US Topo Product Standard, 2011.  
A metadata file associated with this product is draft version 0.6.3



QUADRANGLE LOCATION

Madrid	Cottonwood	Grangeburg
Campbellton	Sills	Malone
Cottondale West	Cottondale East	Marianna

ADJOINING 7.5' QUADRANGLES



SILLS, FL-AL  
2012