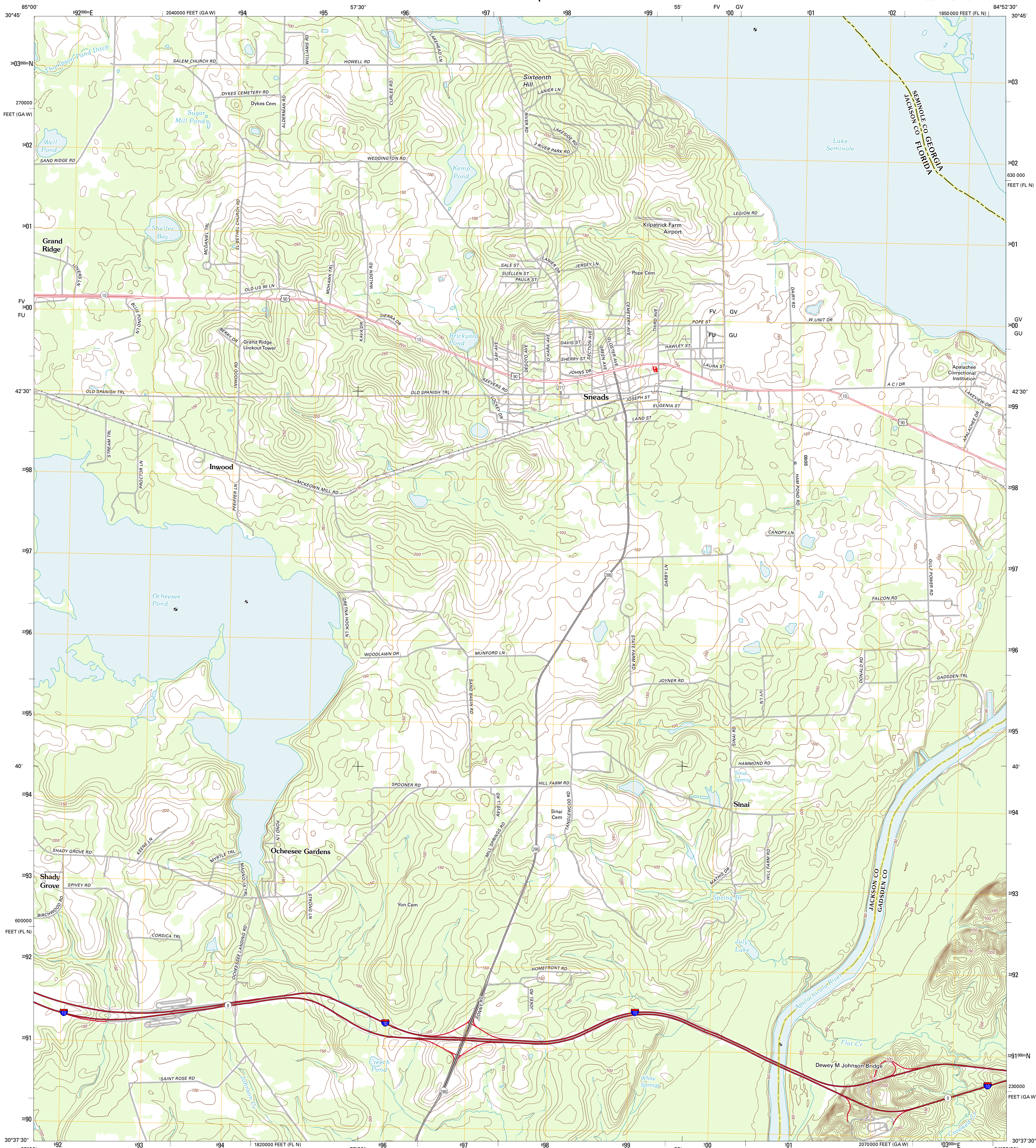




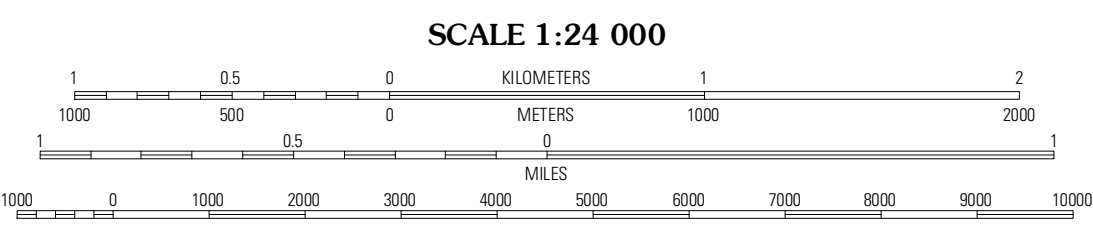
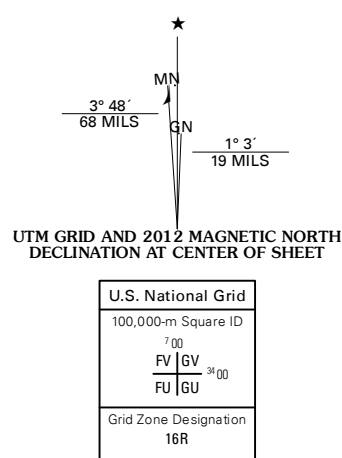
U.S. DEPARTMENT OF THE INTERIOR
U. S. GEOLOGICAL SURVEY



SNEADS QUADRANGLE
FLORIDA-GEORGIA
7.5-MINUTE SERIES

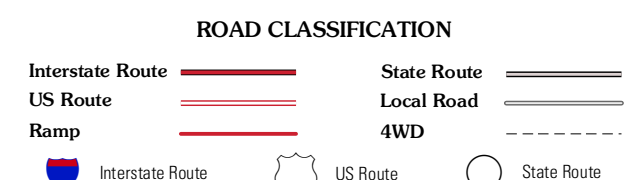


Produced by the United States Geological Survey
North American Datum of 1983 (NAD83)
World Geodetic System of 1984 (WGS84). Projection and
1 000-meter grid; Universal Transverse Mercator, Zone 16R
10 000-foot ticks; Florida Coordinate System of 1983 (north
zone), Georgia Coordinate System of 1983 (west zone)



CONTOUR INTERVAL 10 FEET
NORTH AMERICAN VERTICAL DATUM OF 1988

This map was produced to conform with the
National Geospatial Program US Topo Product Standard, 2011.
A metadata file associated with this product is draft version 0.6.3



QUADRANGLE LOCATION

Delwood	Fairchild	Reynoldsville
Cypress	Sneads	Shanaboeche
Altha East	Rock Bluff	Sycamore

ADJOINING 7.5' QUADRANGLES

SNEADS, FL-GA
2012