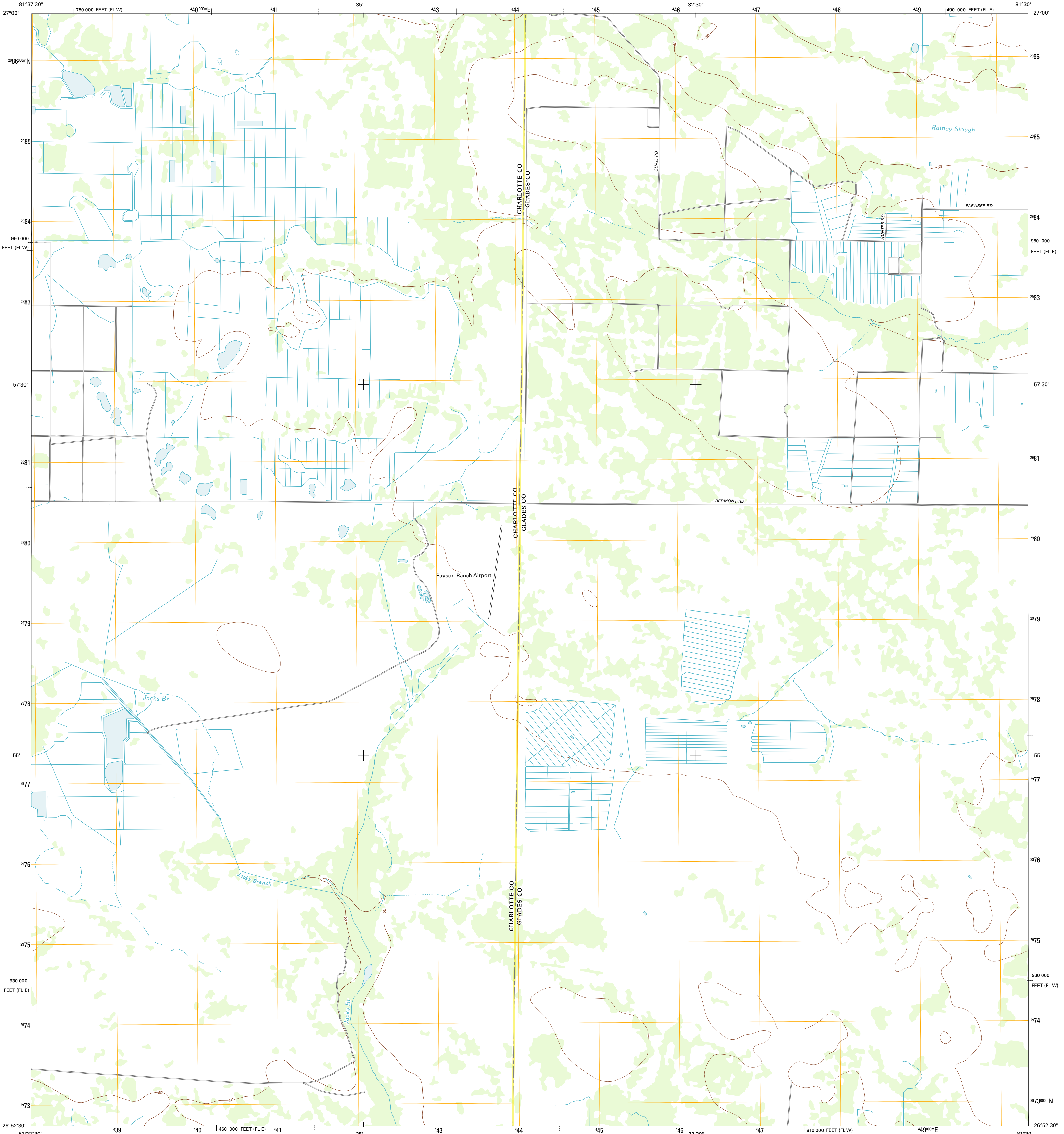




U.S. DEPARTMENT OF THE INTERIOR  
U. S. GEOLOGICAL SURVEY

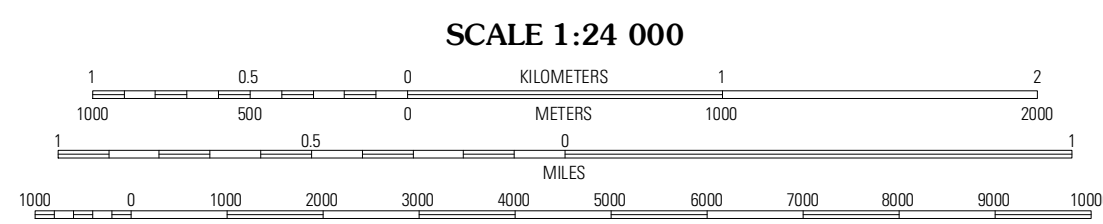
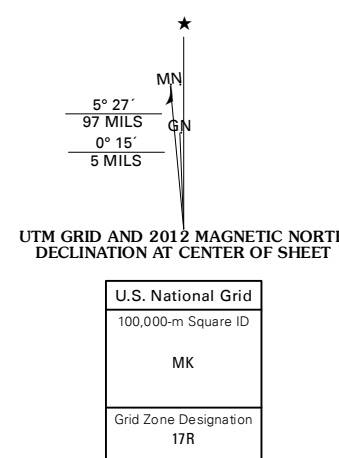


TELEGRAPH SWAMP NE QUADRANGLE  
FLORIDA  
7.5-MINUTE SERIES



Produced by the United States Geological Survey  
North American Datum of 1983 (NAD83)  
World Geodetic System of 1984 (WGS84) Projection and  
1 000-meter grid: Universal Transverse Mercator, Zone 17R  
10 000-foot ticks: Florida Coordinate System of 1983 (east  
and west zones)

Imagery.....NAIP, May 2010  
Roads.....©2006-2011 TomTom  
Names.....GNIS, 2011  
Hydrography.....National Hydrography Dataset, 2010  
Contours.....National Elevation Dataset, 2012  
Boundaries.....Census, IBWC, IBC, USGS, 1972 - 2010



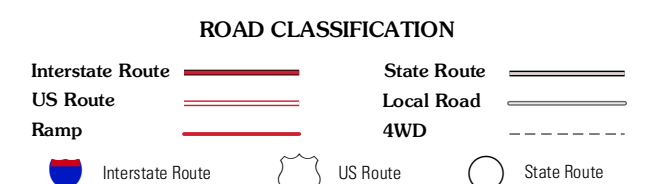
CONTOUR INTERVAL 10 FEET  
NORTH AMERICAN VERTICAL DATUM OF 1988  
This map was produced to conform with the  
National Geospatial Program US Topo Product Standard, 2011.  
A metadata file associated with this product is draft version 0.6.3



QUADRANGLE LOCATION

Long Island Marsh SW	Long Island Marsh SE	Venus SW
Telegraph Swamp NW	Telegraph Swamp NE	La Belle NW
Telegraph Swamp	Telegraph Swamp SE	La Belle

ADJOINING 7.5 QUADRANGLES



TELEGRAPH SWAMP NE, FL  
2012