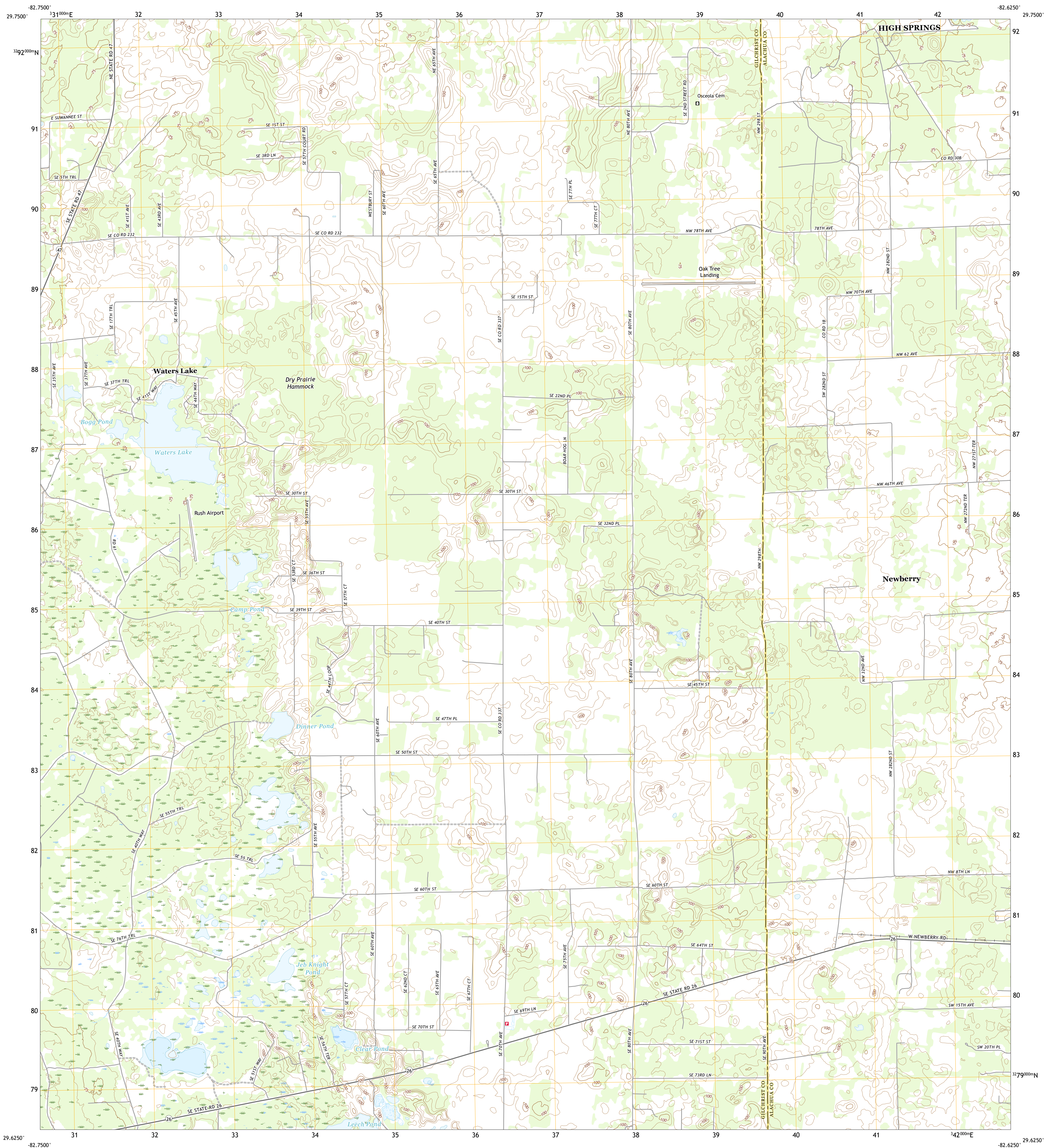




U.S. DEPARTMENT OF THE INTERIOR
U.S. GEOLOGICAL SURVEY

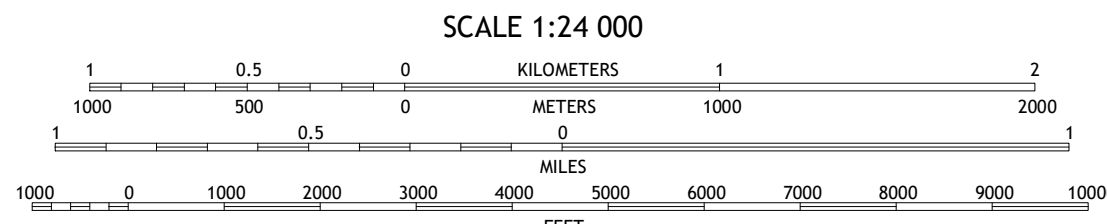
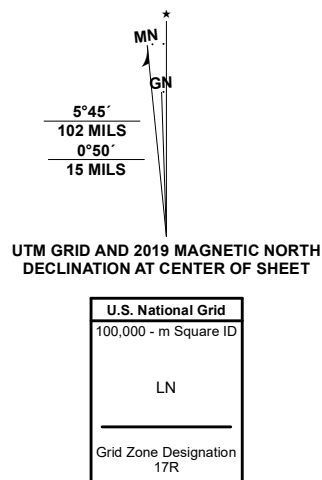


WATERS LAKE QUADRANGLE
FLORIDA
7.5-MINUTE SERIES

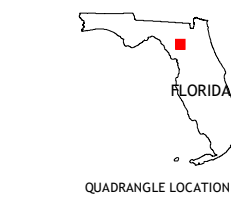


Produced by the United States Geological Survey
North American Datum of 1983 (NAD83)
World Geodetic System of 1984 (WGS84). Projection and
1 000-meter grid/Universal Transverse Mercator, Zone 17R.
This map is not a legal document. Boundaries may be
generalized for this map scale. Private lands within government
reservations may not be shown. Obtain permission before
entering private lands.

ImageryNAIP	November	2019
RoadsU.S. Census Bureau	2016	
NamesGNIS	1979	2020
HydrographyNational Hydrography Dataset	1899	2020
ContoursNational Elevation Dataset	2012	2018
Boundaries	sources: see metadata file	2018	2019
Public Land Survey SystemBLM	2020	
WetlandsFWS National Wetlands Inventory	1983	



CONTOUR INTERVAL 5 FEET
NORTH AMERICAN VERTICAL DATUM OF 1988
This map was produced to conform with the
National Geospatial Program US Topo Product Standard.



1	2	3
4	5	6
7	8	

ADJOINING QUADRANGLES

ROAD CLASSIFICATION		
Expressway	Local Connector	
Secondary Hwy	Local Road	
Ramp	4WD	
Interstate Route	US Route	State Route

- 1 Bell
- 2 High Springs SW
- 3 High Springs
- 4 Fourmile Lake
- 5 Newberry
- 6 Trenton
- 7 Newberry SW
- 8 Archer

WATERS LAKE, FL
2021



NSN 1643016361203
NSA REF NO. USGS X 2 4 K 4 7 6 8 5