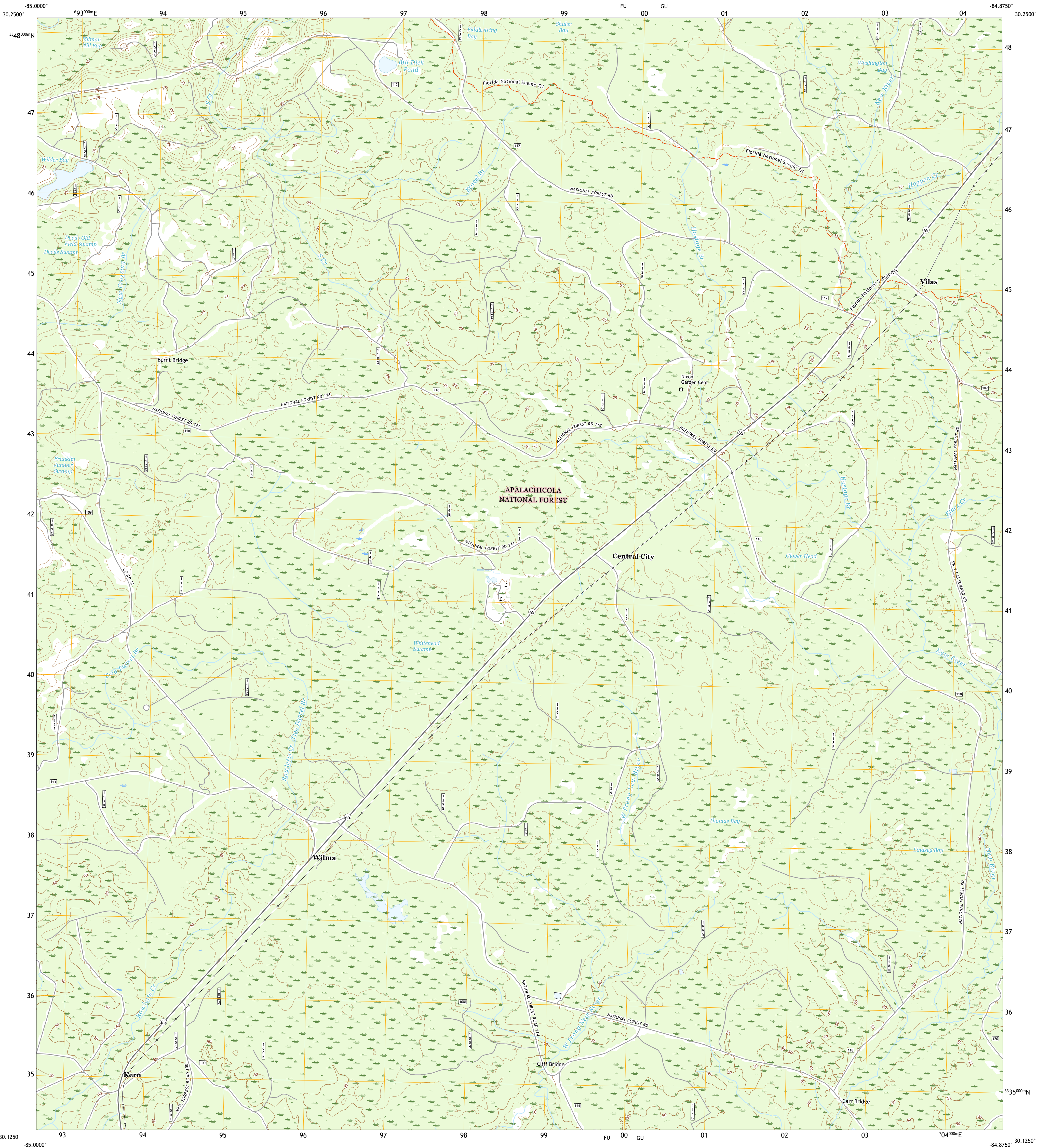




U.S. DEPARTMENT OF THE INTERIOR
U.S. GEOLOGICAL SURVEY



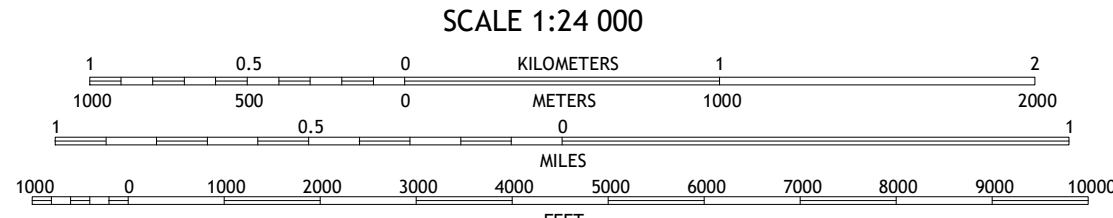
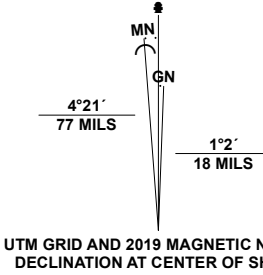
WILMA QUADRANGLE
FLORIDA - LIBERTY COUNTY
7.5-MINUTE SERIES



Produced by the United States Geological Survey

North American Datum of 1983 (NAD83)
World Geodetic System of 1984 (WGS84) - Projection and
1 000-meter grid/Universal Transverse Mercator, Zone 16R
This map is not a legal document. Boundaries may be
generalized for this map scale. Private lands within government
reservations may not be shown. Obtain permission before
entering private lands.

Imagery.....NAIP, November 2019
Roads.....U.S. Census Bureau, Not Available
Names.....GNIS, 1979 - 2020
Hydrography.....National Hydrography Dataset, 2003 - 2019
Contours.....National Elevation Dataset, 2019
Boundaries.....Multiple sources; see metadata
Public Land Survey System.....BLM, 2020
Wetlands.....FWS National Wetlands Inventory 1973 - 1979



CONTOUR INTERVAL 5 FEET
NORTH AMERICAN VERTICAL DATUM OF 1988
This map was produced to conform with the
National Geospatial Program US Topo Product Standard.



| | | |
|---|---|---|
| 1 | 2 | 3 |
| 4 | 5 | 6 |
| 7 | 8 | |

ADJOINING QUADRANGLES

- 1 Estifanulla
- 2 Woods
- 3 Telogia
- 4 Orange
- 5 Kennedy Bay
- 6 Kennedy Creek
- 7 Sumatra
- 8 Owens Bridge

| ROAD CLASSIFICATION | |
|---------------------|-------------------------|
| Expressway | Local Connector |
| Secondary Hwy | Local Road |
| Ramp | 4WD |
| Interstate Route | US Route |
| FS Primary Route | FS Passenger Route |
| | FS High Clearance Route |

Check with local Forest Service unit
for current travel conditions and restrictions.

WILMA, FL
2021

