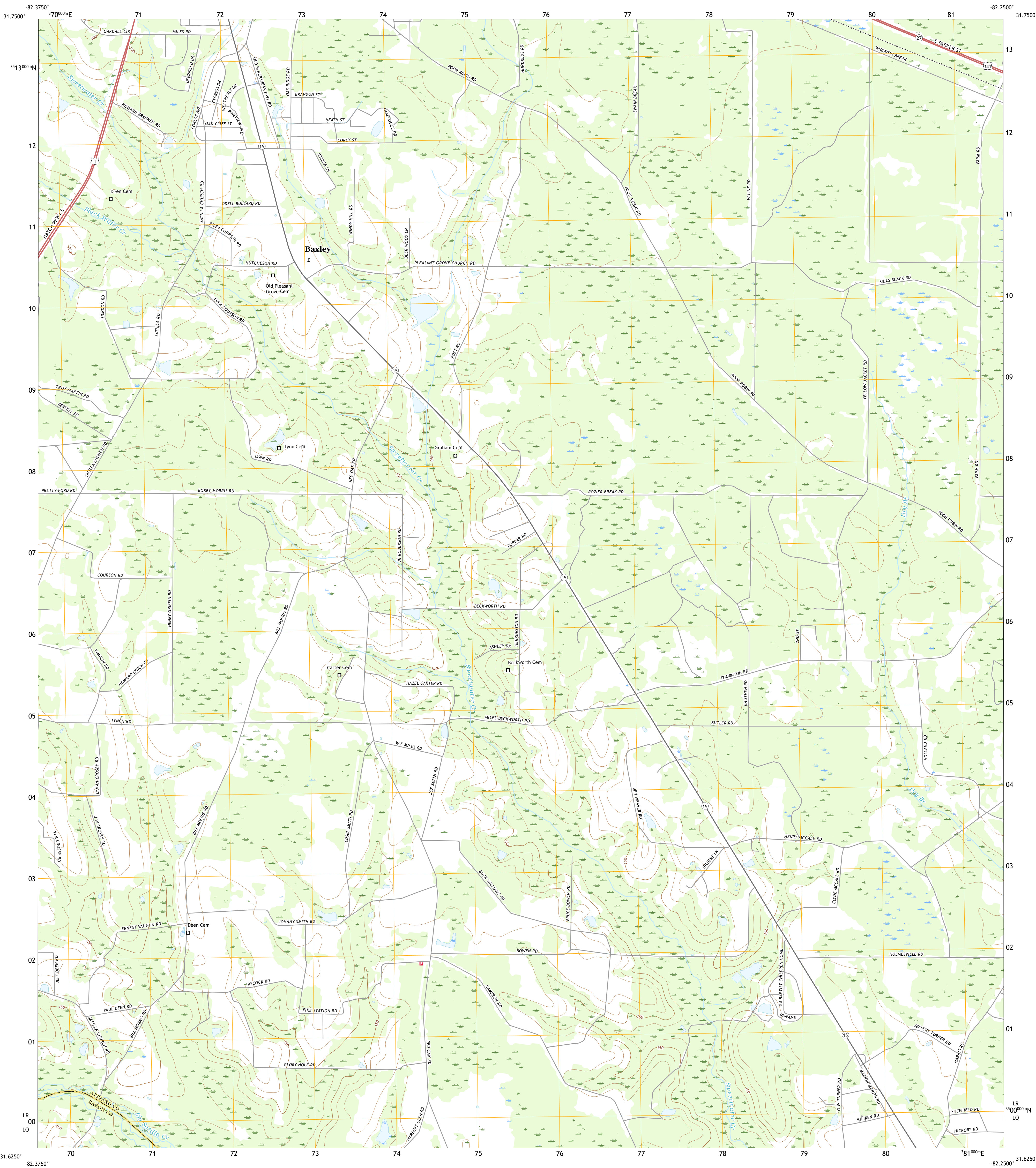




U.S. DEPARTMENT OF THE INTERIOR
U.S. GEOLOGICAL SURVEY

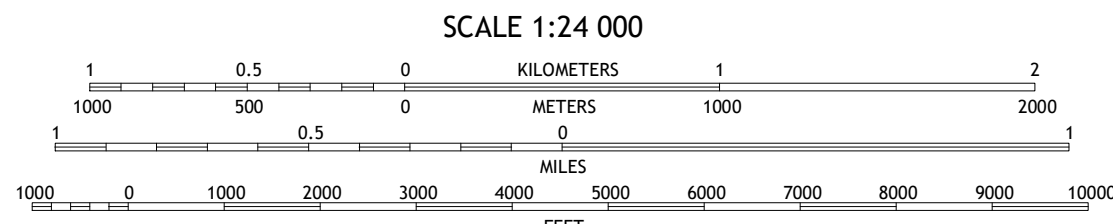
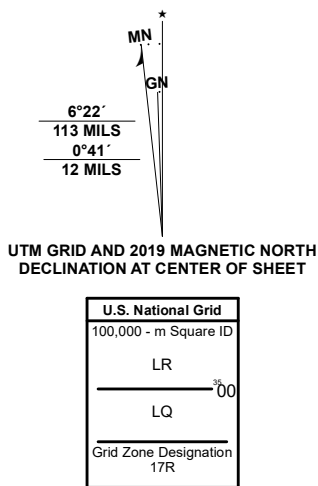


ALMA NE QUADRANGLE
GEORGIA
7.5-MINUTE SERIES



Produced by the United States Geological Survey

North American Datum of 1983 (NAD83)
World Geodetic System of 1984 (WGS84) - Projection and
1 000-meter grid/Universal Transverse Mercator, Zone 17R
This map is not a legal document. Boundaries may be
generalized for this map scale. Private lands within government
reservations may not be shown. Obtain permission before
entering private lands.
Imagery:.....NAIP, October 2017 - December 2017
Roads:.....U.S. Census Bureau, 2017
Names:.....GNIS, 1979 - 2020
Hydrography:.....National Hydrography Dataset, 2002 - 2019
Contours:.....National Elevation Dataset, 2008
Boundaries:.....Multiple sources; see metadata file 2018 - 2019
Wetlands:.....FWS National Wetlands Inventory Not Available



CONTOUR INTERVAL 10 FEET
NORTH AMERICAN VERTICAL DATUM OF 1988
This map was produced to conform with the
National Geospatial Program US Topo Product Standard, 2011.
A metadata file associated with this product is draft version 0.6.18



1	2	3
4	5	6
7	8	9

1 Pine Grove
2 Baxley
3 Altamaha SW
4 Alma NW
5 Surrency
6 Alma
7 Coffee
8 K'Ville

ROAD CLASSIFICATION	
Expressway	Local Connector
Secondary Hwy	Local Road
Ramp	4WD
Interstate Route	US Route
	State Route

ALMA NE, GA
2020

