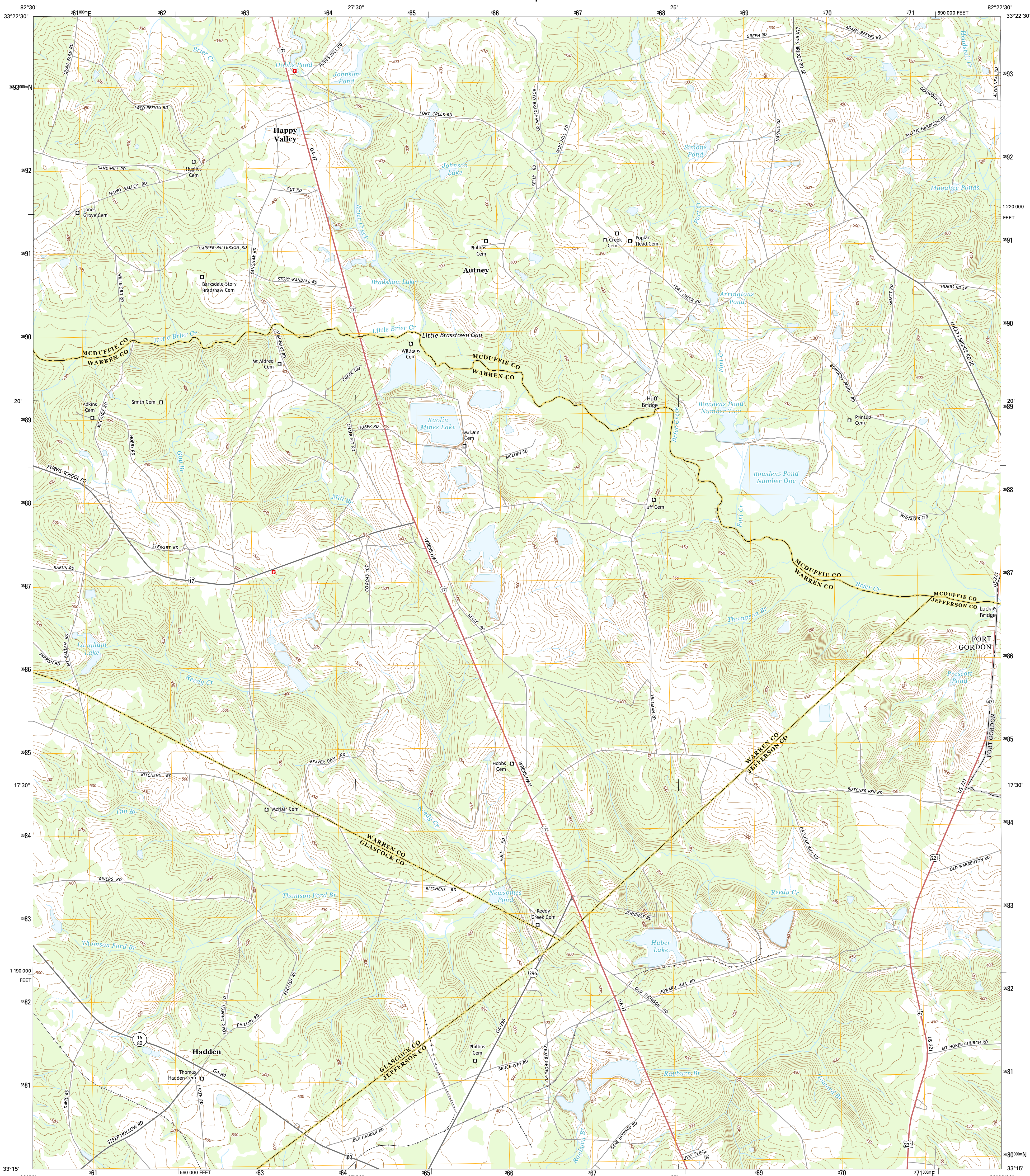




U.S. DEPARTMENT OF THE INTERIOR
U.S. GEOLOGICAL SURVEY



BOWDENS POND QUADRANGLE
GEORGIA
7.5-MINUTE SERIES

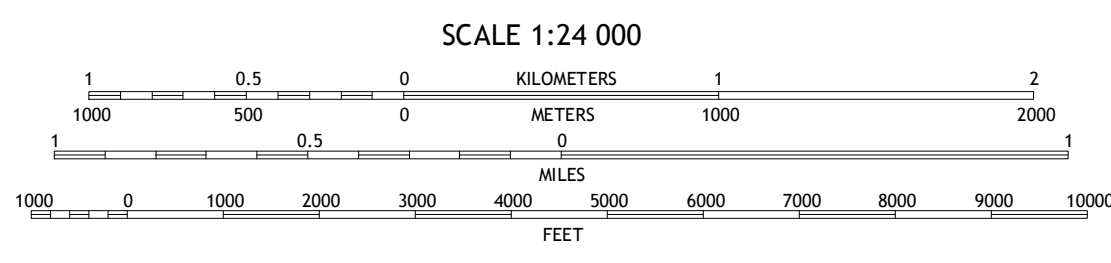
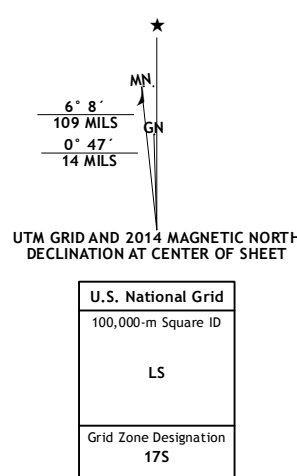


Produced by the United States Geological Survey

North American Datum of 1983 (NAD83)
World Geodetic System of 1984 (WGS84) Projection and
1 000-meter grid: Universal Transverse Mercator, Zone 17S
10 000-foot ticks: Georgia Coordinate System of 1983 (east zone)

This map is not a legal document. Boundaries may be generalized for this map scale. Private lands within government reservations may not be shown. Obtain permission before entering private lands.

Imagery:.....NAIP, July 2010 - September 2010
Roads:.....HERE, ©2013
Names:.....GNIS, 2013
Hydrography:.....National Hydrography Dataset, 2010
Contours:.....National Elevation Dataset, 2008
Boundaries:.....Multiple sources; see metadata file 1972 - 2013



CONTOUR INTERVAL 10 FEET
NORTH AMERICAN VERTICAL DATUM OF 1988

This map was produced to conform with the National Geospatial Program US Topo Product Standard, 2011. A metadata file associated with this product is draft version 0.6.16



QUADRANGLE LOCATION

ROAD CLASSIFICATION

Expressway	Local Connector
Secondary Hwy	Local Road
Ramp	4WD
Interstate Route	US Route
	State Route

ADJOINING QUADRANGLES

1	2	3
4	5	6
7	8	

- 1 Thomson West
- 2 Thomson East
- 3 Harlem
- 4 Bastonville
- 5 Avondale
- 6 Gibson
- 7 Wrens
- 8 Matthews

BOWDENS POND, GA
2014



NSN 7540-01-000-1000
U.S. G.S. X 2 4 K 6 0 3 4
NSA REF. NO. U.S. G.S. X 2 4 K 6 0 3 4