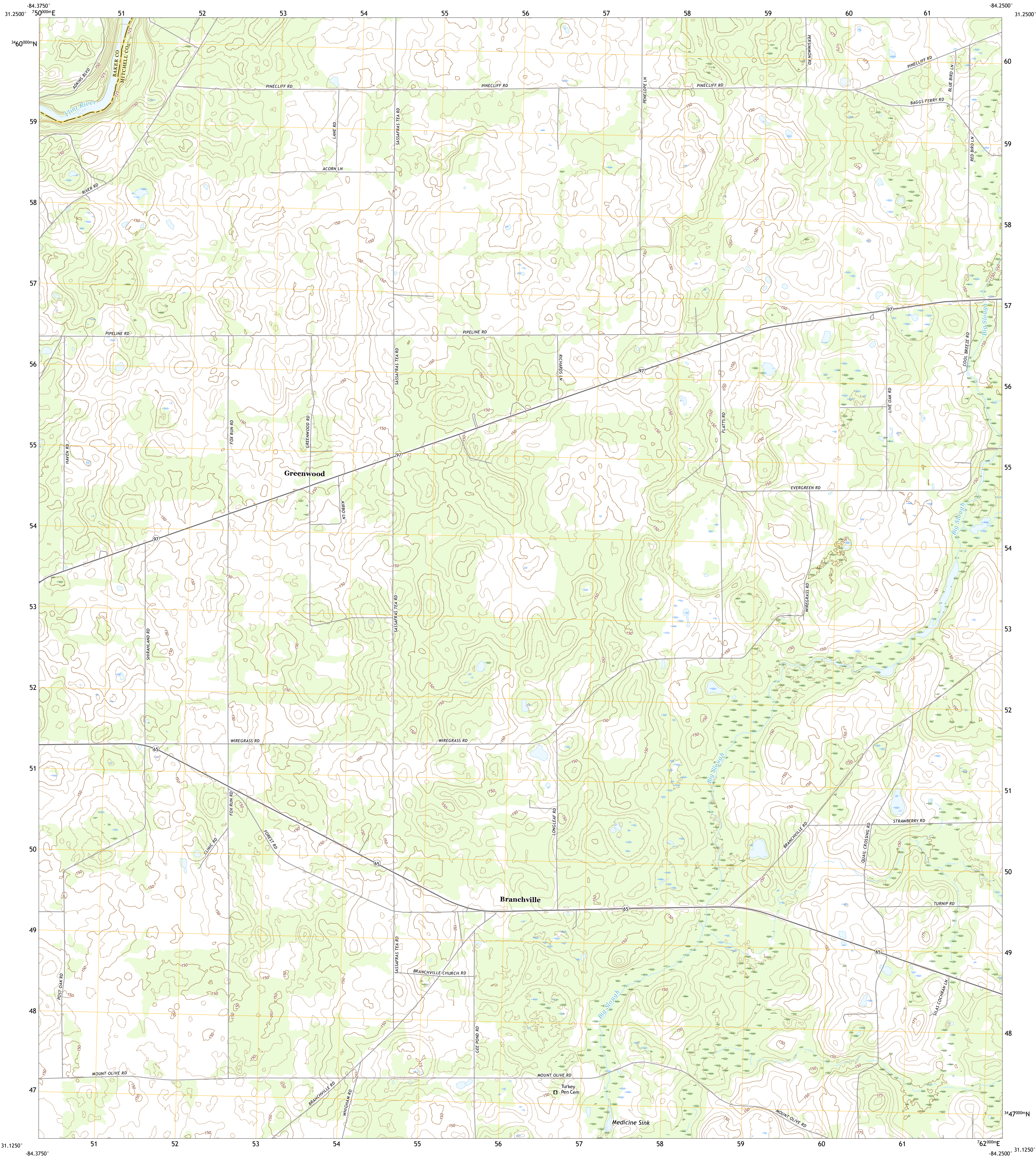




U.S. DEPARTMENT OF THE INTERIOR
U.S. GEOLOGICAL SURVEY



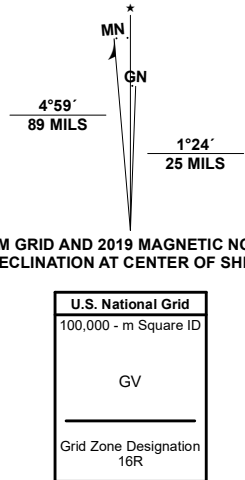
BRANCHVILLE QUADRANGLE
GEORGIA
7.5-MINUTE SERIES



Produced by the United States Geological Survey

North American Datum of 1983 (NAD83)
World Geodetic System of 1984 (WGS84) - Projection and
1 000-meter grid/Universal Transverse Mercator, Zone 16R
This map is not a legal document. Boundaries may be
generalized for this map scale. Private lands within government
reservations may not be shown. Obtain permission before
entering private lands.

Imagery.....NAIP, September 2017 - December 2017
Roads.....U.S. Census Bureau, 2017
Names.....GNS, 1979 - 2016
Hydrography.....National Hydrography Dataset, 2002 - 2019
Contours.....National Elevation Dataset, 2018
Boundaries.....Multiple sources; see metadata file 2018 - 2019
Wetlands.....FWS National Wetlands Inventory Not Available



CONTOUR INTERVAL 5 FEET
NORTH AMERICAN VERTICAL DATUM OF 1988
This map was produced to conform with the
National Geospatial Program US Topo Product Standard, 2011.
A metadata file associated with this product is draft version 0.6.18



1	2	3
4	5	6
7	8	

1 Elmodel
2 Newton
3 Baconton South
4 Hopewell
5 Camilla
6 Vada
7 Gee Pond
8 Pelham

ROAD CLASSIFICATION
Expressway
Secondary Hwy
Ramp
Interstate Route
Local Connector
Local Road
4WD
US Route
State Route

BRANCHVILLE, GA
2020

