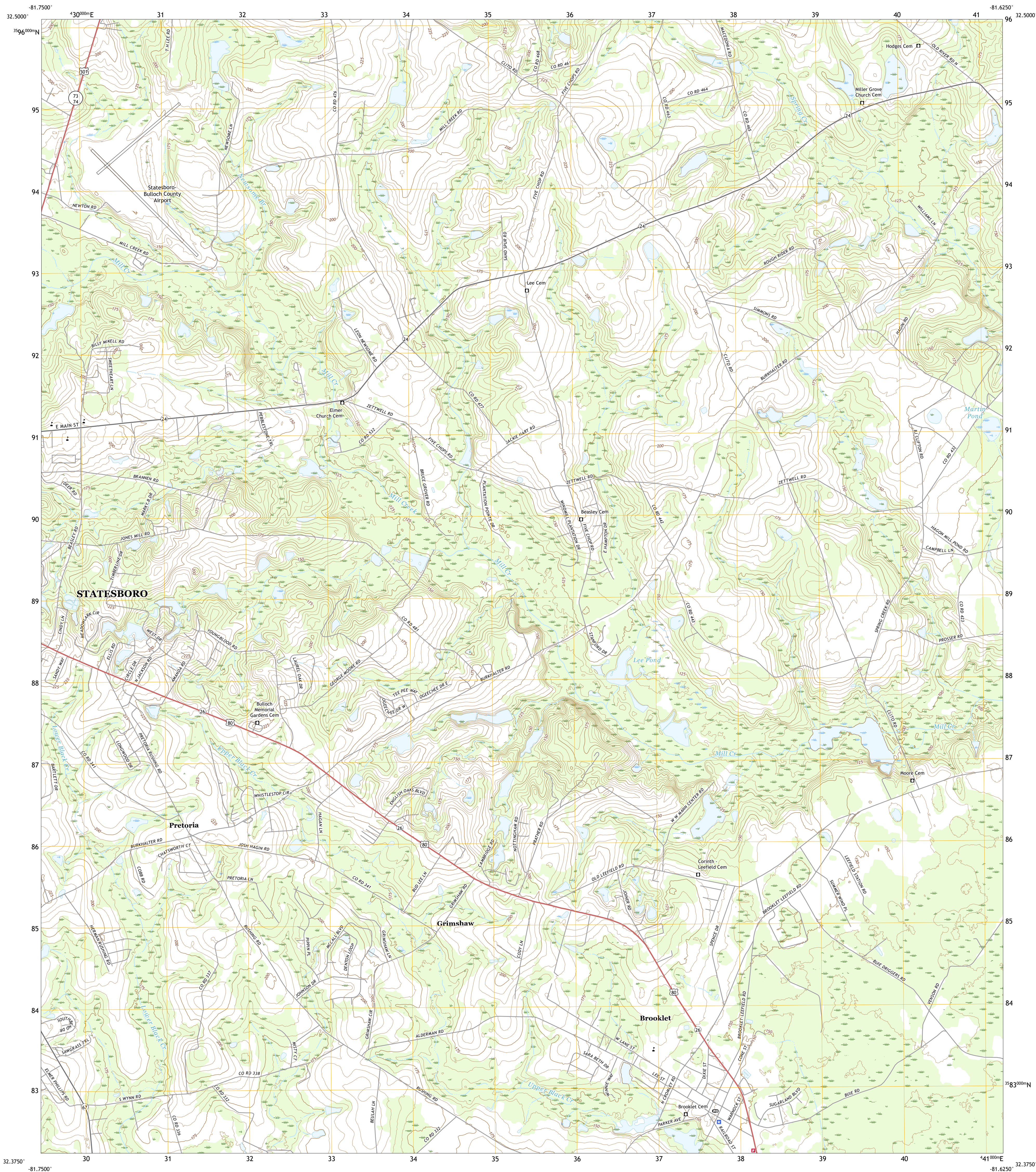




U.S. DEPARTMENT OF THE INTERIOR
U.S. GEOLOGICAL SURVEY

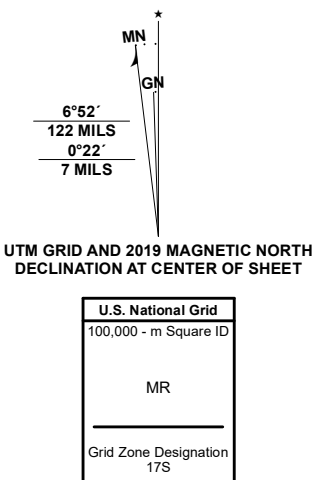


BROOKLET QUADRANGLE
GEORGIA - BULLOCH COUNTY
7.5-MINUTE SERIES



Produced by the United States Geological Survey

North American Datum of 1983 (NAD83)
World Geodetic System of 1984 (WGS84) Projection and
1 000-meter grid/Universal Transverse Mercator, Zone 17S
This map is not a legal document. Boundaries may be
generalized for this map scale. Private lands within government
reservations may not be shown. Obtain permission before
entering private lands.
Imagery.....NAIP, October 2017 - December 2017
Roads.....U.S. Census Bureau, 2017
Names.....GNIS, 1979 - 2020
Hydrography.....National Hydrography Dataset, 1899 - 2018
Contours.....National Elevation Dataset, 2012
Boundaries.....Multiple sources; see metadata file 2018 - 2019
Wetlands.....FWS National Wetlands Inventory Not Available



1	2	3
4	5	6
7	8	

1 Hopeulikit
2 Dover
3 Oliver
4 Statesboro
5 Leefield
6 Nevils
7 Denmark
8 Siltson

ROAD CLASSIFICATION	
Expressway	Local Connector
Secondary Hwy	Local Road
Ramp	4WD
Interstate Route	US Route
	State Route

BROOKLET, GA
2020

