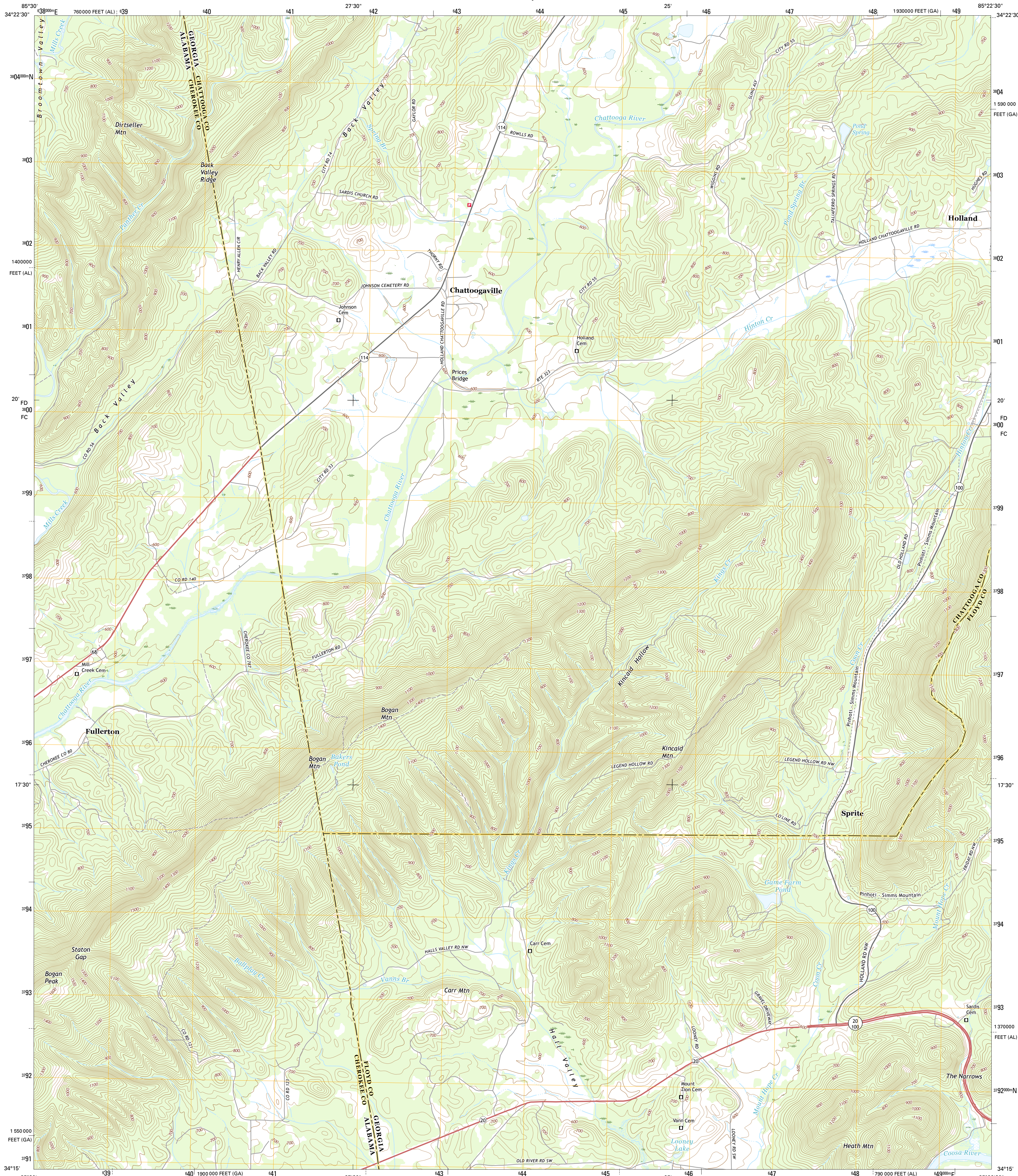




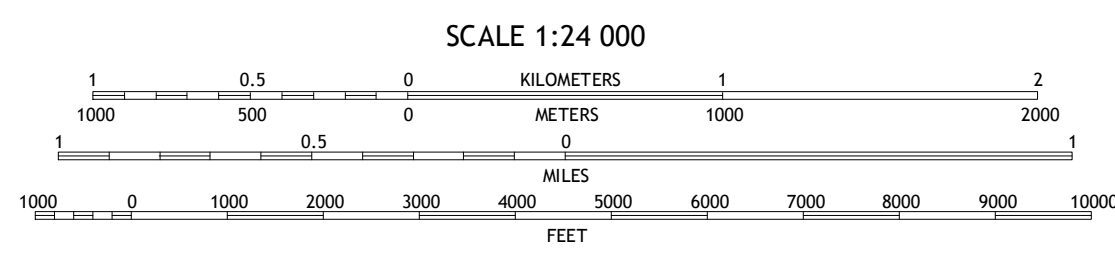
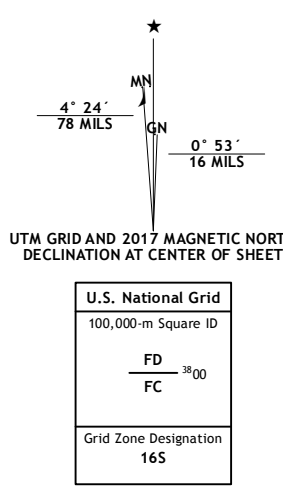
U.S. DEPARTMENT OF THE INTERIOR
U.S. GEOLOGICAL SURVEY



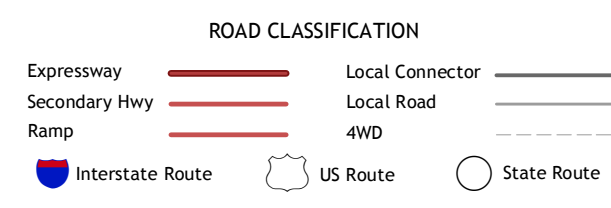
CHATTOOGAVILLE QUADRANGLE
GEORGIA-ALABAMA
7.5-MINUTE SERIES



Produced by the United States Geological Survey
North American Datum of 1983 (NAD83)
World Geodetic System of 1984 (WGS84). Projection and 1000-foot ticks: Georgia Coordinate System of 1983 (west zone), Alabama Coordinate System of 1983 (east zone)
This map is not a legal document. Boundaries may be generalized for this map scale. Private lands within government reservations may not be shown. Obtain permission before entering private lands.
Imagery: N.A.I.P., November 2015
Roads: U.S. Census Bureau, 2015
Names: GNIS, 2016
Hydrography: National Hydrography Dataset, 2015
Contours: National Elevation Dataset, 2009
Boundaries: Multiple sources; see metadata file 1972_2016
Public Land Survey System: BLM, 2014
Wetlands: FWS National Wetlands Inventory 1977 - 2014



CONTOUR INTERVAL 20 FEET
NORTH AMERICAN VERTICAL DATUM OF 1988
This map was produced to conform with the National Geospatial Program US Topo Product Standard, 2011. A metadata file associated with this product is draft version 0.6.19



1	2	3
4	5	6
7	8	

ADJOINING QUADRANGLES

- 1 Jamestown
- 2 Lyerly
- 3 Summerville
- 4 Gaylesville
- 5 Rock Mountain
- 6 Cedar Bluff
- 7 Melson
- 8 Livingston

CHATTOOGAVILLE, GA-AL
2017

