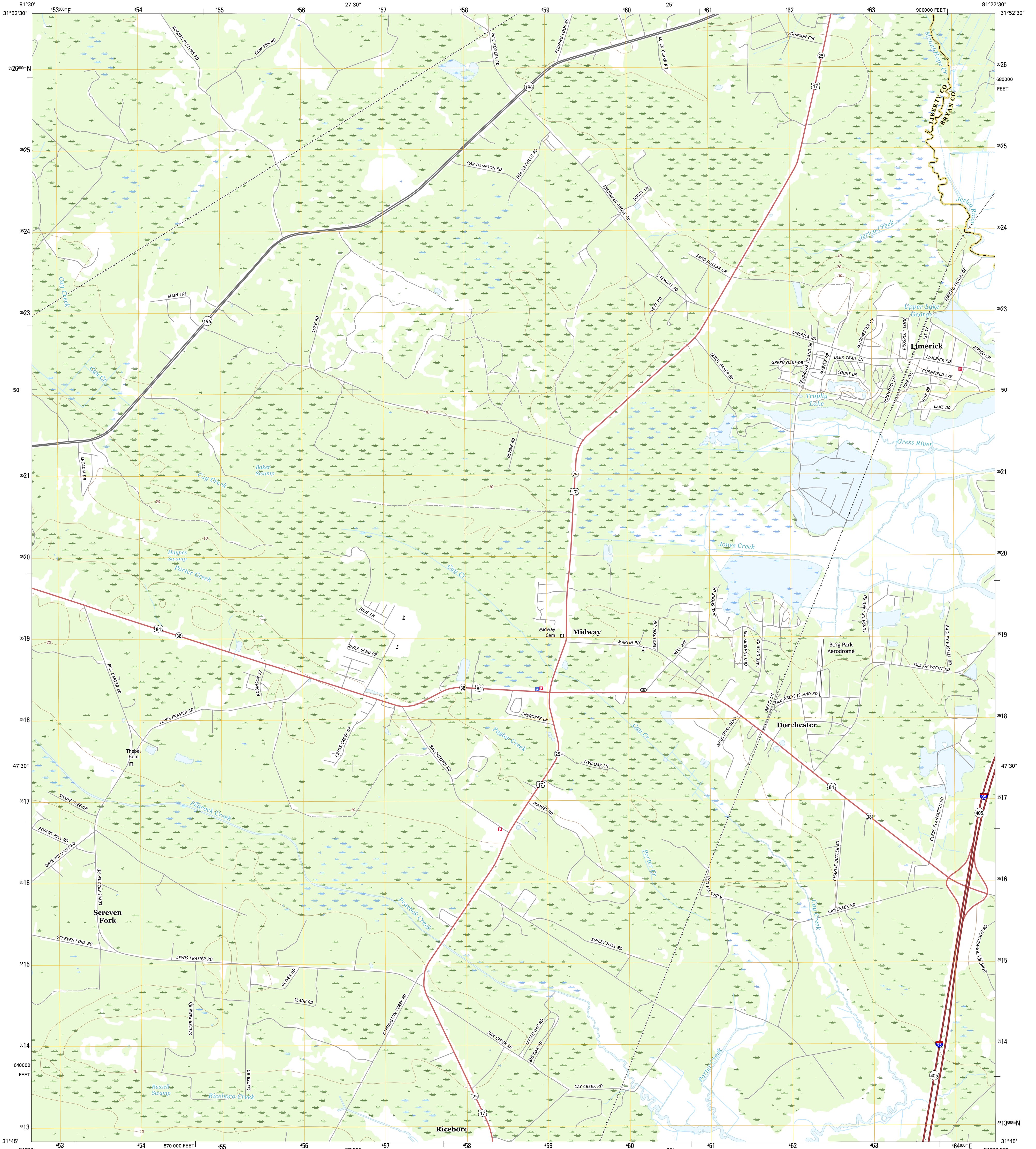




U.S. DEPARTMENT OF THE INTERIOR  
U.S. GEOLOGICAL SURVEY



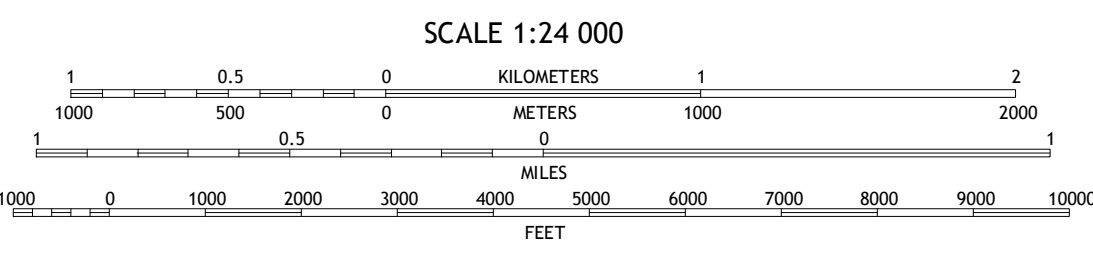
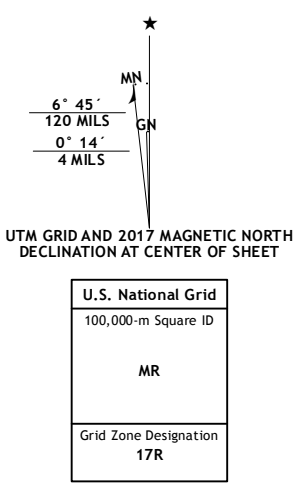
DORCHESTER QUADRANGLE  
GEORGIA  
7.5-MINUTE SERIES



**Produced by the United States Geological Survey**  
 North American Datum of 1983 (NAD83)  
 World Geodetic System of 1984 (WGS84)  
 Projection and 1000-meter grid: Universal Transverse Mercator, Zone 17R  
 10 000-foot ticks: Georgia Coordinate System of 1983 (east zone)

This map is not a legal document. Boundaries may be generalized for this map scale. Private lands within government reservations may not be shown. Obtain permission before entering private lands.

Imagery: N.A.P., December 2015  
 Roads: U.S. Census Bureau, 2015 - 2016  
 Names: G.N.S., 2016  
 Hydrography: National Hydrography Dataset, 2015  
 Contours: National Elevation Dataset, 2008  
 Boundaries: Multiple sources; see metadata file 1972 - 2016  
 Wetlands: FWS National Wetlands Inventory 1977 - 2014



CONTOUR INTERVAL 10 FEET  
 NORTH AMERICAN VERTICAL DATUM OF 1988

This map was produced to conform with the National Geospatial Program US Topo Product Standard, 2011. A metadata file associated with this product is draft version 0.6.19



**ROAD CLASSIFICATION**

|                  |                 |
|------------------|-----------------|
| Expressway       | Local Connector |
| Secondary Hwy    | Local Road      |
| Ramp             | 4WD             |
| Interstate Route | US Route        |
|                  | State Route     |

ADJOINING QUADRANGLES

|   |   |   |
|---|---|---|
| 1 | 2 | 3 |
| 4 | 5 | 6 |
| 7 | 8 |   |

1 Trinity  
 2 Limerick NW  
 3 Richmond Hill  
 4 Hinesville  
 5 Limerick SE  
 6 East of Ludowici  
 7 Riceboro  
 8 Seabrook

DORCHESTER, GA  
2017



NSN 7540-01-000-1000  
 NGA REF NO. USGS X 24 K 1 2 5 7 1