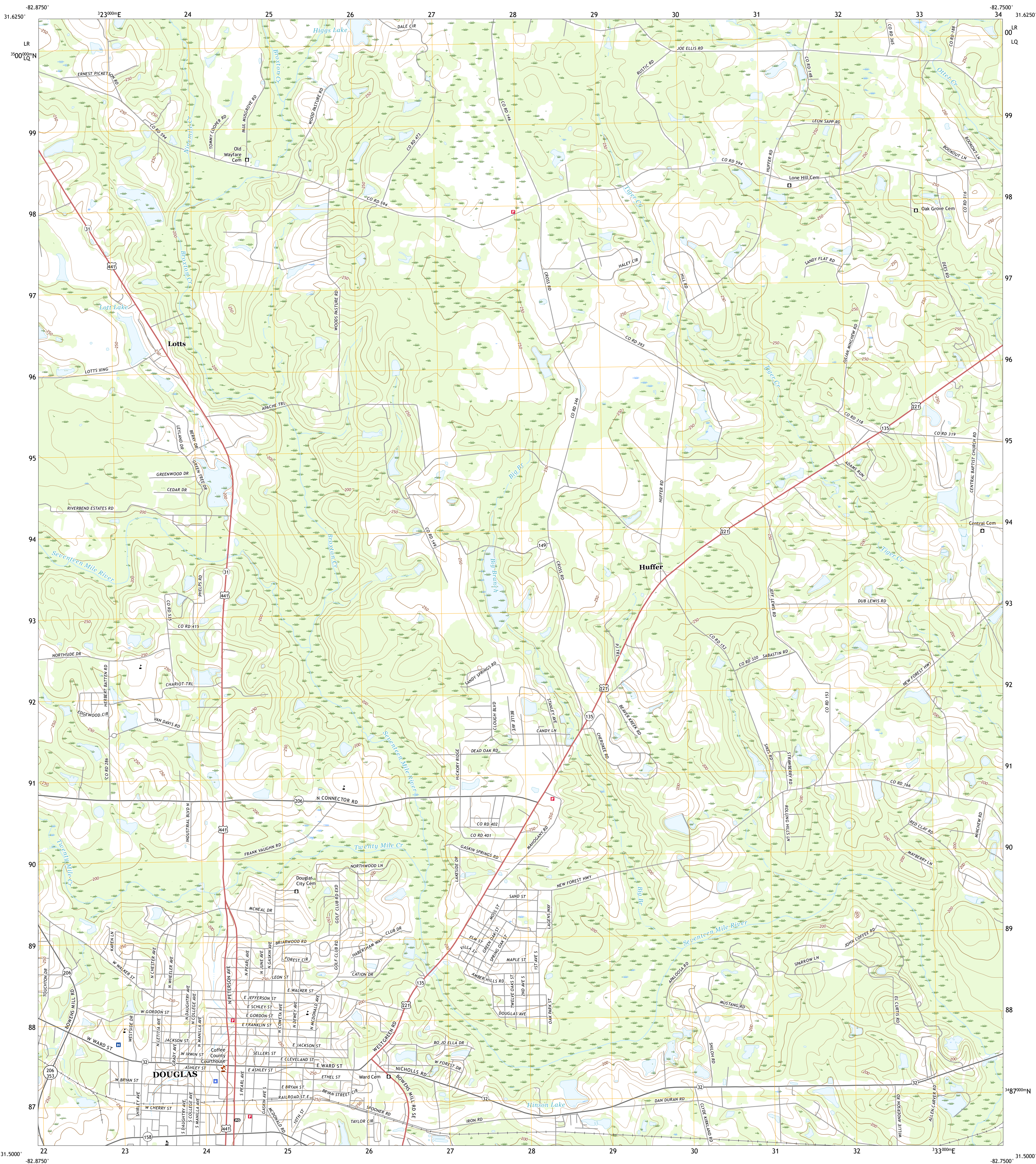




U.S. DEPARTMENT OF THE INTERIOR
U.S. GEOLOGICAL SURVEY

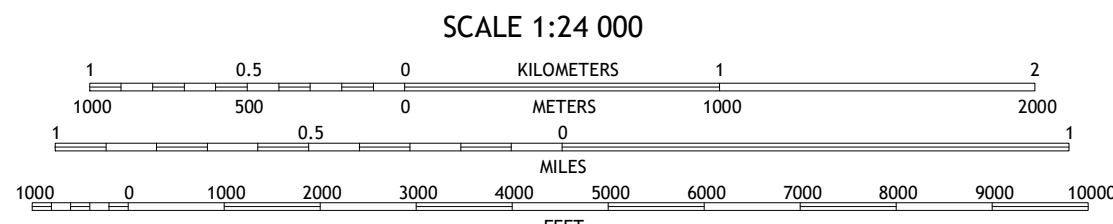
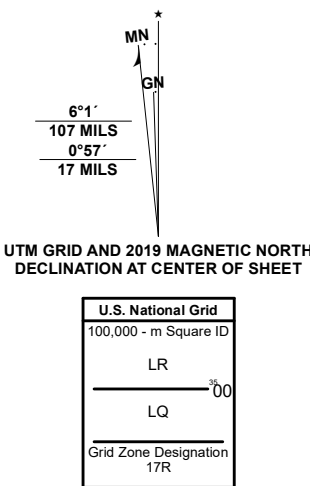


DOUGLAS NORTH QUADRANGLE
GEORGIA - COFFEE COUNTY
7.5-MINUTE SERIES



Produced by the United States Geological Survey

North American Datum of 1983 (NAD83)
World Geodetic System of 1984 (WGS84) - Projection and
1 000-meter grid/Universal Transverse Mercator, Zone 17R
This map is not a legal document. Boundaries may be
generalized for this map scale. Private lands within government
reservations may not be shown. Obtain permission before
entering private lands.
Imagery:.....NAIP, October 2017 - December 2017
Roads:.....U.S. Census Bureau, 2017
Names:.....GNIS, 1979 - 2020
Hydrography:.....National Hydrography Dataset, 1899 - 2019
Contours:.....National Elevation Dataset, 2008
Boundaries:.....Multiple sources; see metadata file 2018 - 2019
Wetlands:.....FWS National Wetlands Inventory Not Available



1	2	3
4	5	6
7	8	9

ADJOINING QUADRANGLES

ROAD CLASSIFICATION	
Expressway	Local Connector
Secondary Hwy	Local Road
Ramp	4WD
Interstate Route	US Route
	State Route

DOUGLAS NORTH, GA
2020

