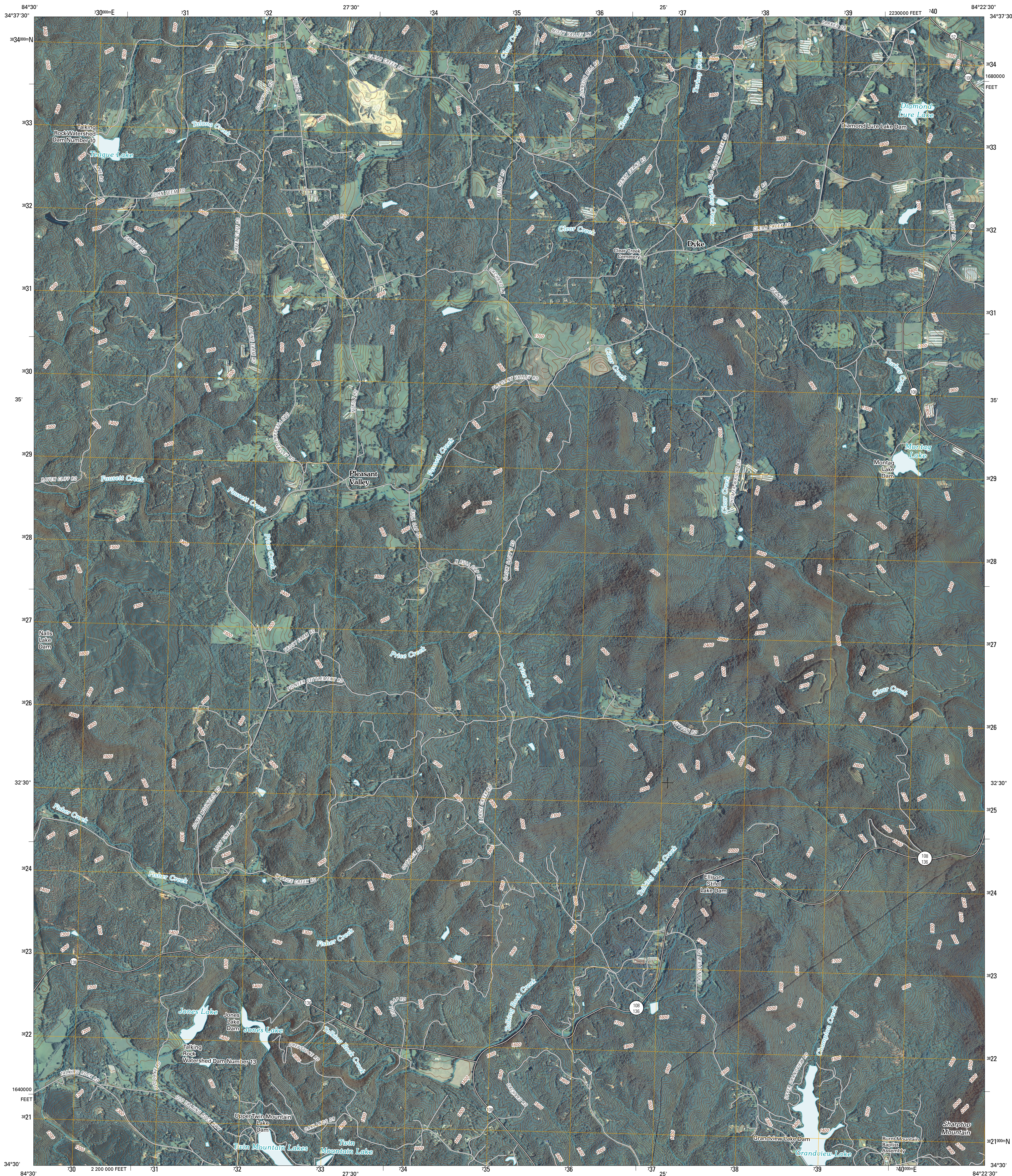




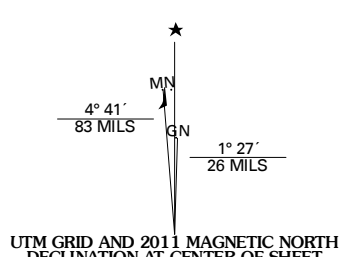
U.S. DEPARTMENT OF THE INTERIOR
U. S. GEOLOGICAL SURVEY



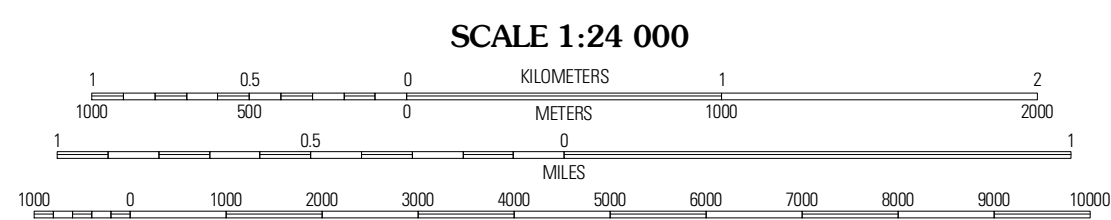
DYKE QUADRANGLE
GEORGIA
7.5-MINUTE SERIES



Produced by the United States Geological Survey
North American Datum of 1983 (NAD83)
World Geodetic System of 1984 (WGS84). Projection and
1 000-meter grid: Universal Transverse Mercator, Zone 16S
10 000-foot ticks: Georgia Coordinate System of 1983
(west zone)



| | |
|-----------------------|--------------------|
| U.S. National Grid | 180,000m Square ID |
| | 60 |
| Grid Zone Designation | 16S |



SCALE 1:24 000

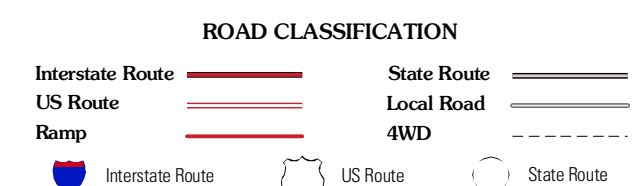
CONTOUR INTERVAL 20 FEET
NORTH AMERICAN VERTICAL DATUM OF 1988

This map was produced to conform with version 0.5.10 of the
draft USGS Standards for 7.5-Minute Quadrangle Maps.
A metadata file associated with this product is draft version 0.5.11



| | | |
|--------------|--------|-------------|
| Webb | Eljay | Tickanetley |
| Talking Rock | Dyke | Anticalola |
| Ludville | Jasper | Nelson |

ADJOINING 7.5 QUADRANGLES



DYKE, GA
2011