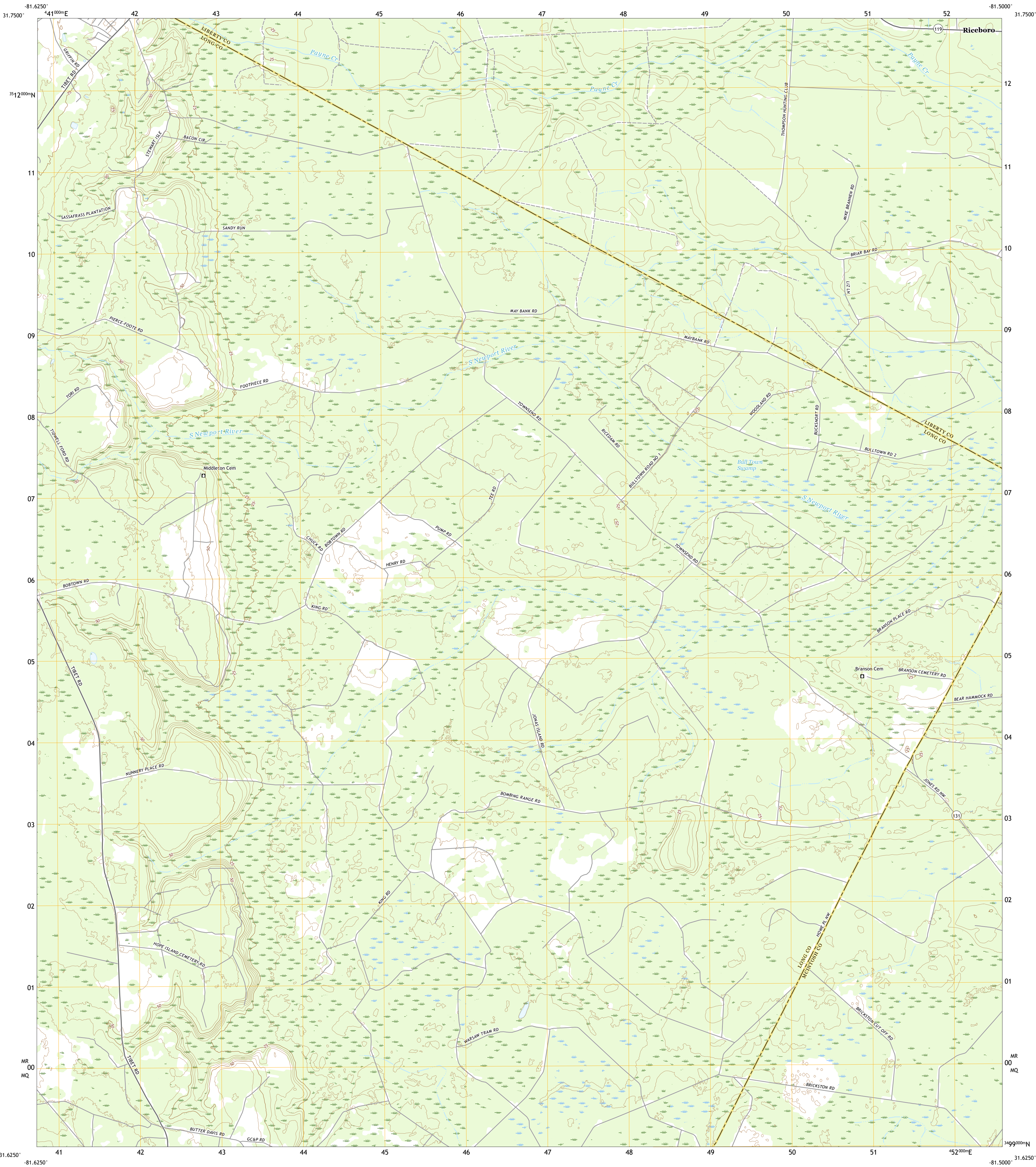




U.S. DEPARTMENT OF THE INTERIOR  
U.S. GEOLOGICAL SURVEY

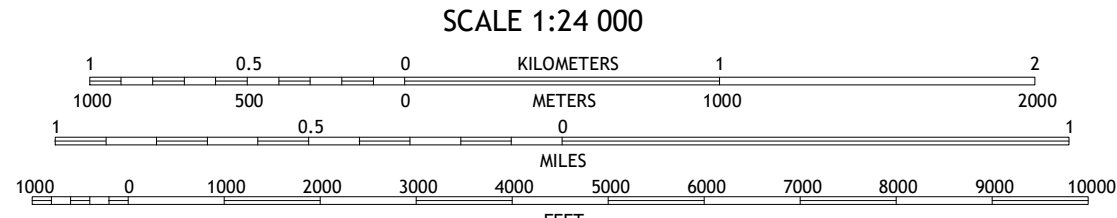
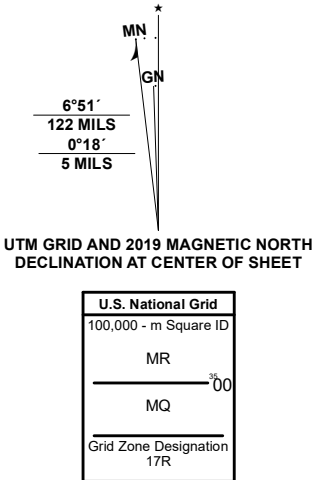


EAST OF LUDOWICI QUADRANGLE  
GEORGIA  
7.5-MINUTE SERIES



Produced by the United States Geological Survey

North American Datum of 1983 (NAD83)  
World Geodetic System of 1984 (WGS84) - Projection and  
1 000-meter grid/Universal Transverse Mercator, Zone 17R  
This map is not a legal document. Boundaries may be  
generalized for this map scale. Private lands within government  
reservations may not be shown. Obtain permission before  
entering private lands.  
Imagery.....NAIP, October 2017 - December 2017  
Roads.....U.S. Census Bureau - 2017  
Names.....GNIS, 1979 - 2020  
Hydrography.....National Hydrography Dataset, 2003 - 2011  
Contours.....National Elevation Dataset, 2008 - 2012  
Boundaries.....Multiple sources; see metadata file 2018 - 2019  
Wetlands.....FWS National Wetlands Inventory Not Available



CONTOUR INTERVAL 5 FEET  
NORTH AMERICAN VERTICAL DATUM OF 1988  
This map was produced to conform with the  
National Geospatial Program US Topo Product Standard, 2011.  
A metadata file associated with this product is draft version 0.6.18



1	2	3
4	5	6
7	8	9

1 Walthourville  
2 Hinesville  
3 Dorchester  
4 Ludowici  
5 Riceboro  
6 Bug Island  
7 Townsend  
8 Eulonia

ROAD CLASSIFICATION	
Expressway	Local Connector
Secondary Hwy	Local Road
Ramp	4WD
Interstate Route	US Route
	State Route

EAST OF LUDOWICI, GA  
2020

