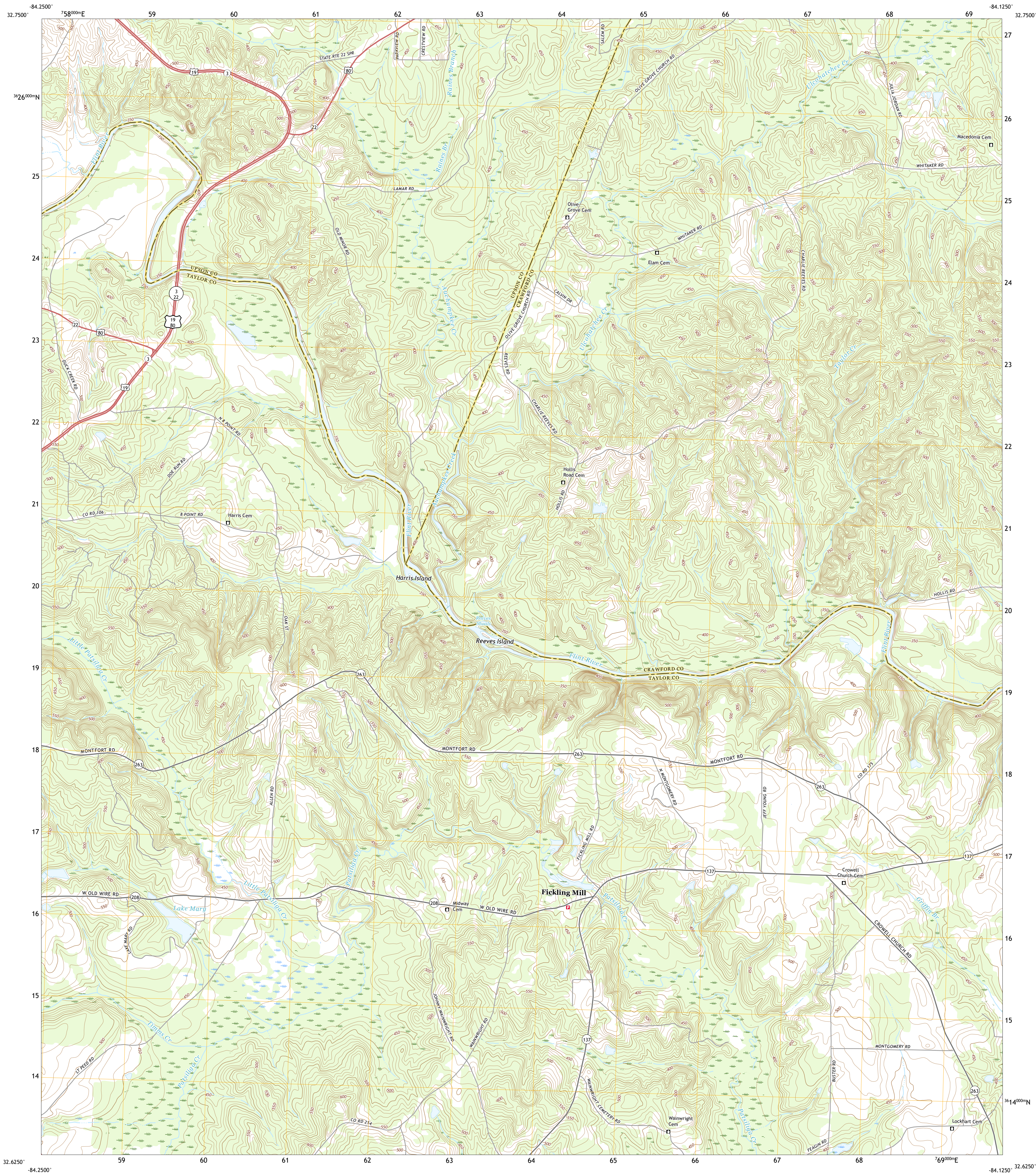




U.S. DEPARTMENT OF THE INTERIOR
U.S. GEOLOGICAL SURVEY



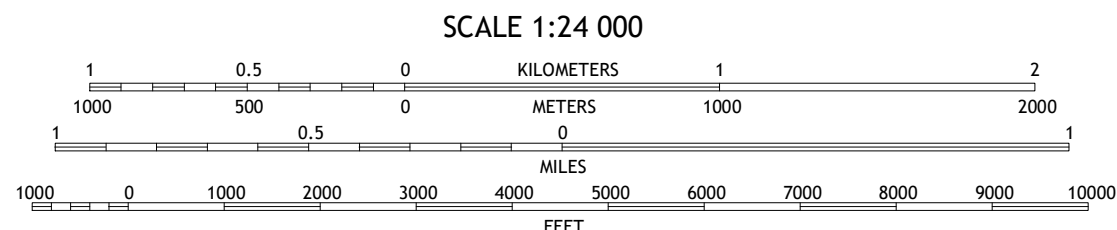
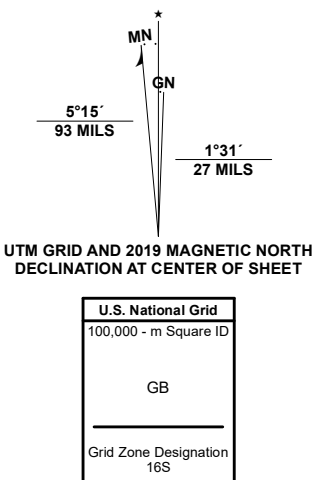
FICKLING MILL QUADRANGLE
GEORGIA
7.5-MINUTE SERIES



Produced by the United States Geological Survey

North American Datum of 1983 (NAD83)
World Geodetic System of 1984 (WGS84), Projection and
1 000-meter grid/Universal Transverse Mercator, Zone 16S
This map is not a legal document. Boundaries may be
generalized for this map scale. Private lands within government
reservations may not be shown. Obtain permission before
entering private lands.

ImageryNAIP, September 2017 - December 2017
RoadsU.S. Census Bureau, 2017
NamesGNS, 1979 - 2020
HydrographyNational Hydrography Dataset, 1899 - 2019
ContoursNational Elevation Dataset, 2008
BoundariesMultiple sources; see metadata file 2018 - 2019
WetlandsFWS National Wetlands Inventory Not Available



CONTOUR INTERVAL 10 FEET
NORTH AMERICAN DATUM OF 1988
This map was produced to conform with the
National Geospatial Program US Topo Product Standard, 2011.
A metadata file associated with this product is draft version 0.6.18



1	2	3
4	5	6
7	8	9

ADJOINING QUADRANGLES

1 Lincoln Park
2 Logtown
3 Culoden
4 Prattburg
5 Roberta
6 Butler West
7 Butler East
8 Reynolds

ROAD CLASSIFICATION		
Expressway	Local Connector	
Secondary Hwy	Local Road	
Ramp	4WD	
Interstate Route	US Route	State Route

FICKLING MILL, GA
2020

