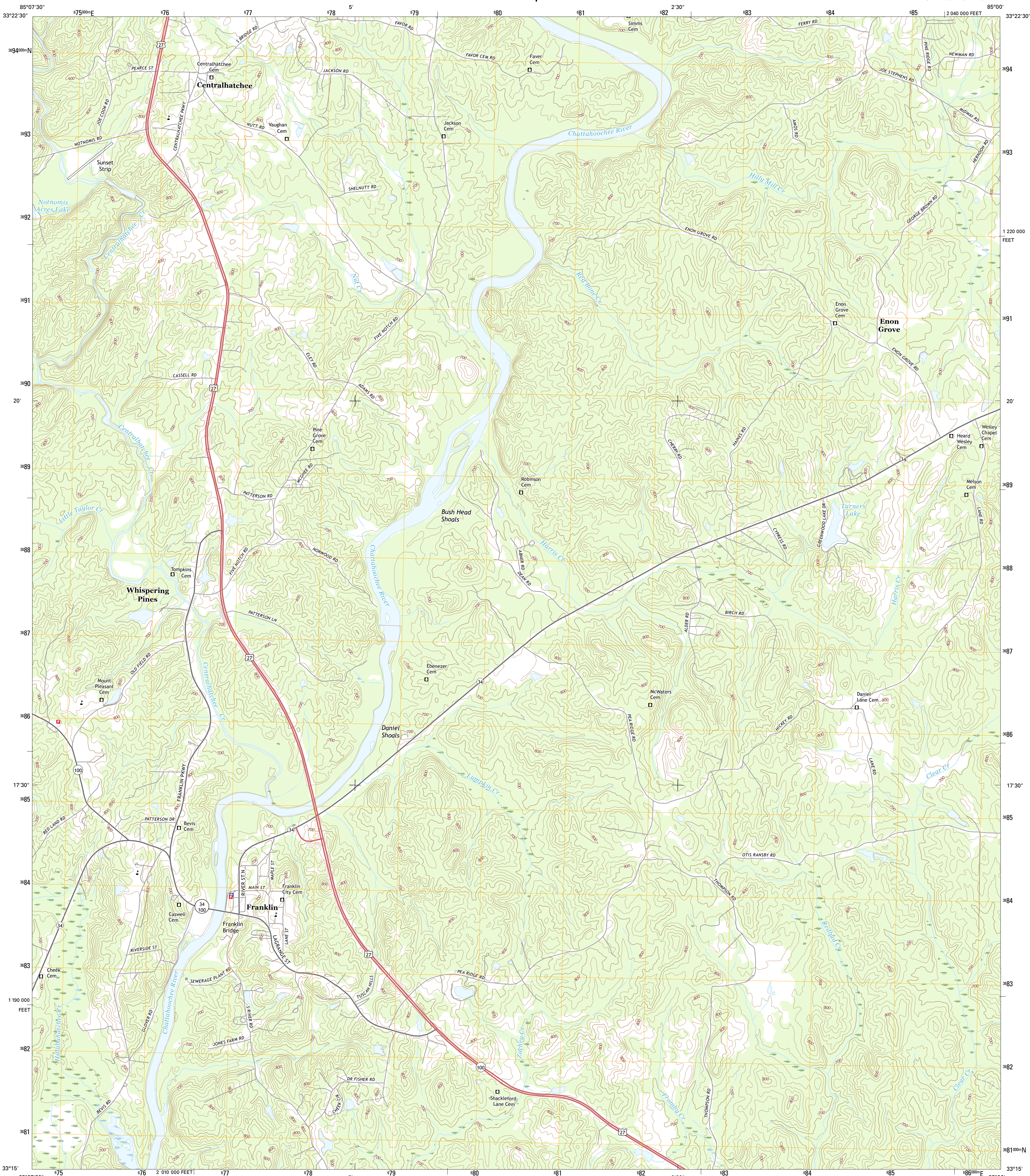




U.S. DEPARTMENT OF THE INTERIOR
U.S. GEOLOGICAL SURVEY



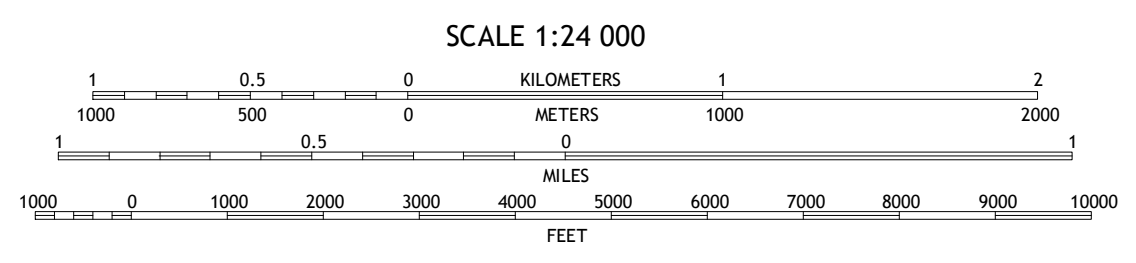
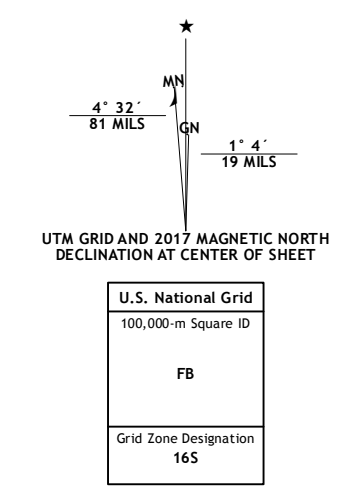
FRANKLIN QUADRANGLE
GEORGIA-HEARD CO.
7.5-MINUTE SERIES



Produced by the United States Geological Survey
North American Datum of 1983 (NAD83)
World Geodetic System of 1984 (WGS84) Projection and
1 000-meter grid: Universal Transverse Mercator, Zone 16S
10 000-foot ticks: Georgia Coordinate System of 1983 (west
zone)

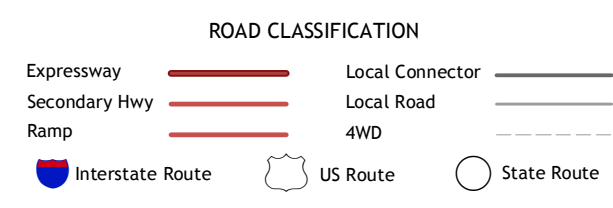
This map is not a legal document. Boundaries may be
generalized for this map scale. Private lands within government
reservations may not be shown. Obtain permission before
entering private lands.

Imagery: N.A.I.P., December 2015
Roads: U.S. Census Bureau, 2015 - 2016
Names: G.N.I.S., 2016
Hydrography: National Hydrography Dataset, 2015
Contours: National Elevation Dataset, 2012
Boundaries: Multiple sources; see metadata file 1972 - 2016
Wetlands: FWS National Wetlands Inventory 1977 - 2014



CONTOUR INTERVAL 20 FEET
NORTH AMERICAN VERTICAL DATUM OF 1988

This map was produced to conform with the
National Geospatial Program US Topo Product Standard, 2011.
A metadata file associated with this product is draft version 0.6.19



ADJOINING QUADRANGLES

1	2	3
4	5	6
7	8	

- 1 Roopville
- 2 Lowell
- 3 Whitesburg
- 4 Frolona
- 5 Newman SW
- 6 Glenn
- 7 Hillcrest
- 8 Hogansville

FRANKLIN, GA
2017



NSN 7540-01-000-1000
NCA REF NO. U.S.G.S.X.2.4.1.6.2.3