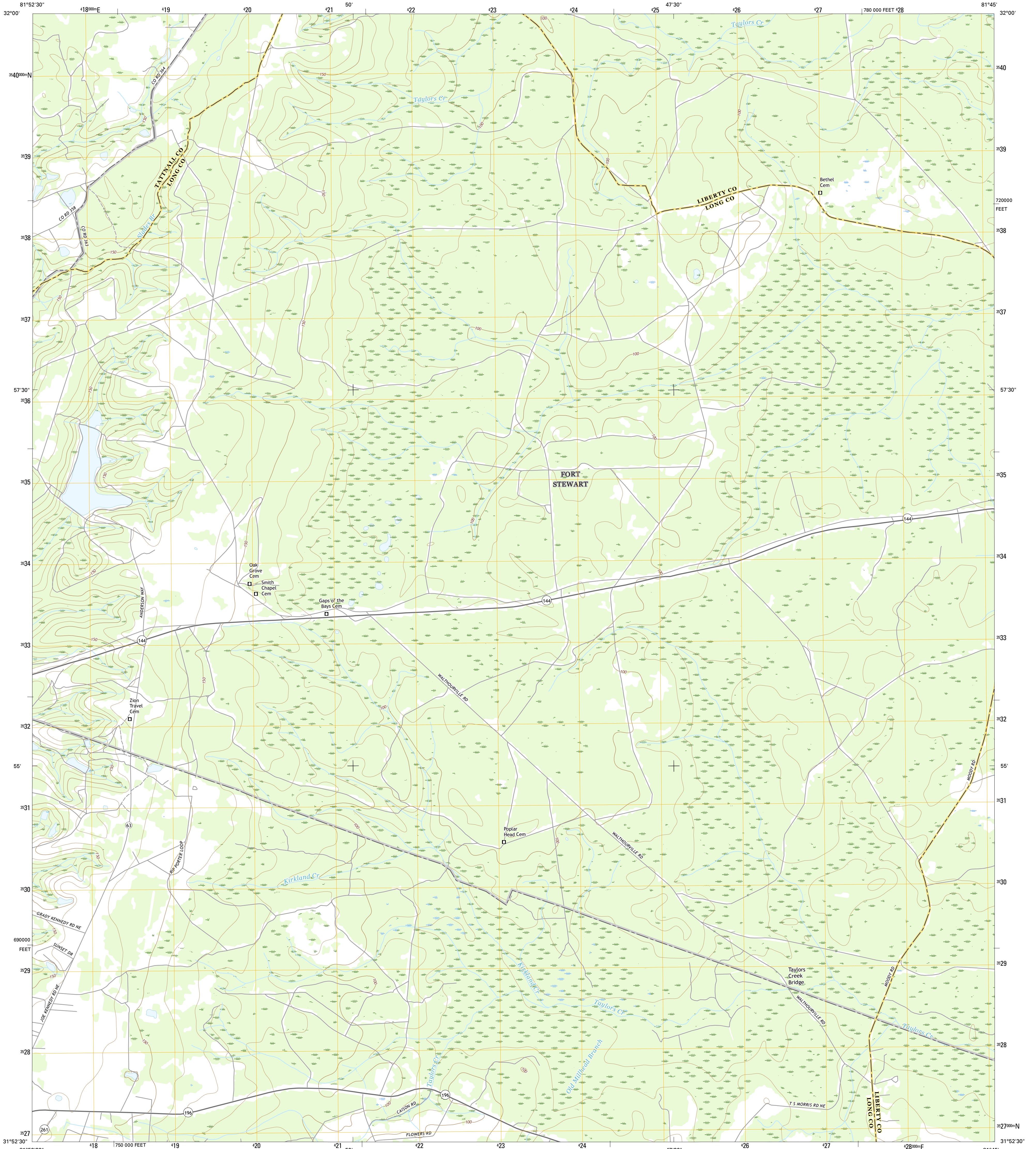




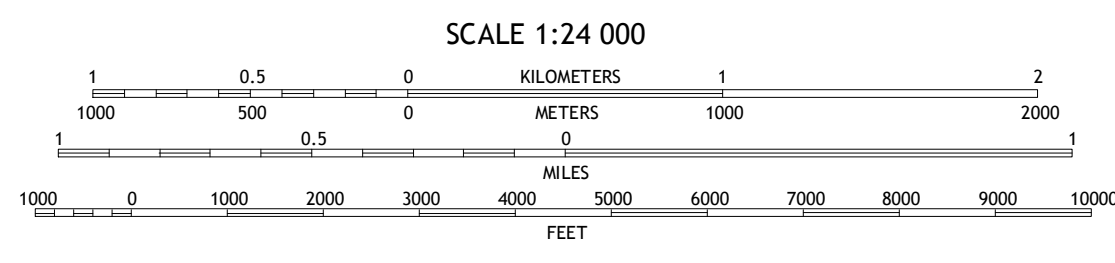
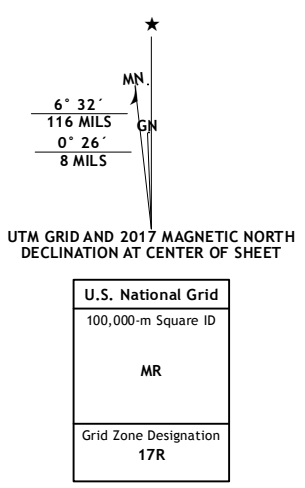
U.S. DEPARTMENT OF THE INTERIOR
U.S. GEOLOGICAL SURVEY



GLENNVILLE NE QUADRANGLE
GEORGIA
7.5-MINUTE SERIES



Produced by the United States Geological Survey
 North American Datum of 1983 (NAD83)
 World Geodetic System of 1984 (WGS84) Projection and
 1 000-meter grid: Universal Transverse Mercator, Zone 17R
 10 000-foot ticks: Georgia Coordinate System of 1983 (east zone)
 This map is not a legal document. Boundaries may be generalized for this map scale. Private lands within government reservations may not be shown. Obtain permission before entering private lands.
 Imagery.....N.A.I.P. December 2015
 Roads.....U.S. Census Bureau, 2015 - 2016
 Names.....GNIS, 2016
 Hydrography.....National Hydrography Dataset, 2015
 Contours.....National Elevation Dataset, 2008
 Boundaries.....Multiple sources; see metadata file 1972 - 2016
 Wetlands.....FWS National Wetlands Inventory 1977 - 2014



SCALE 1:24 000
 CONTOUR INTERVAL 10 FEET
 NORTH AMERICAN VERTICAL DATUM OF 1988
 This map was produced to conform with the National Geospatial Program US Topo Product Standard, 2011. A metadata file associated with this product is draft version 0.6.19



ROAD CLASSIFICATION

Expressway	Local Connector
Secondary Hwy	Local Road
Ramp	4WD
Interstate Route	US Route
	State Route

ADJOINING QUADRANGLES

1	2	3
4	5	6
7	8	

- Deans Crossing
- Gibsons Millpond
- Willie
- Glennville
- Taylor's Creek
- Glennville SW
- Glennville SE
- Walthourville

GLENNVILLE NE, GA
2017

