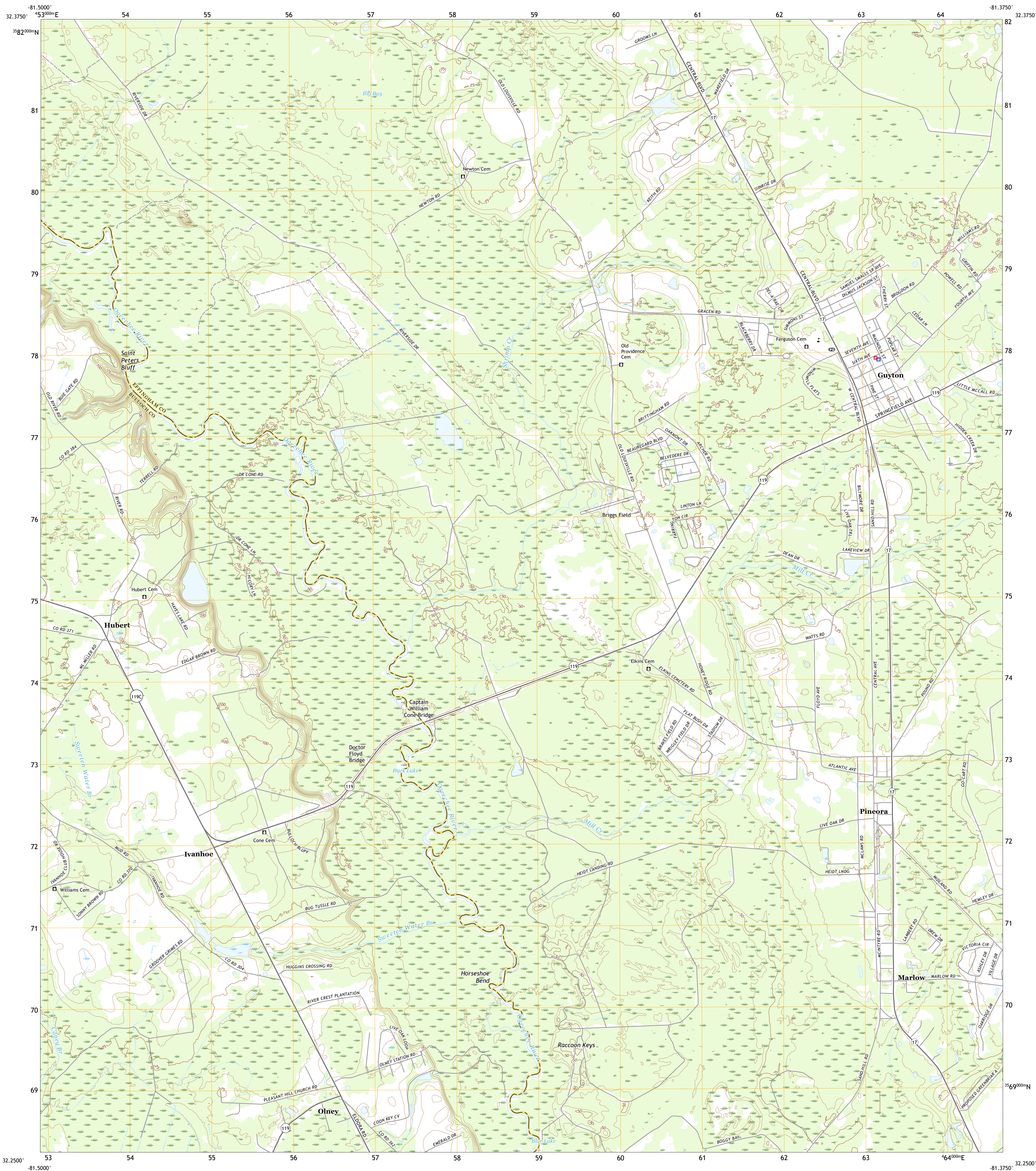




U.S. DEPARTMENT OF THE INTERIOR  
U.S. GEOLOGICAL SURVEY

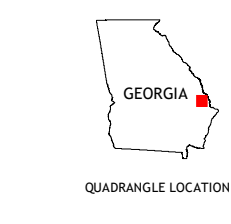
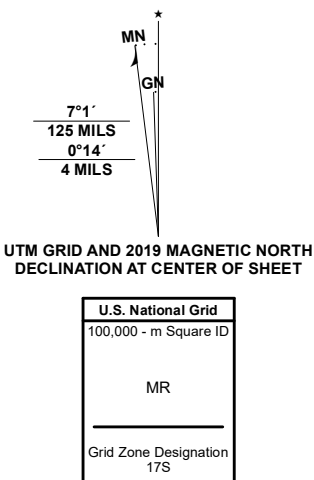


GUYTON QUADRANGLE  
GEORGIA  
7.5-MINUTE SERIES



Produced by the United States Geological Survey

North American Datum of 1983 (NAD83)  
World Geodetic System of 1984 (WGS84) Projection and  
1 000-meter grid/Universal Transverse Mercator, Zone 17S  
This map is not a legal document. Boundaries may be  
generalized for this map scale. Private lands within government  
reservations may not be shown. Obtain permission before  
entering private lands.  
Imagery.....NAIP, October 2017 - December 2017  
Roads.....U.S. Census Bureau - 2017  
Names.....GNIS, 1979 - 2020  
Hydrography.....National Hydrography Dataset, 2002 - 2018  
Contours.....National Elevation Dataset, 2012  
Boundaries.....Multiple sources; see metadata file 2018 - 2019  
Wetlands.....FWS National Wetlands Inventory Not Available



1	2	3
4	5	6
7	8	9

- 1 Leefield
- 2 Egypt
- 3 Springfield North
- 4 Stillson
- 5 Springfield South
- 6 Lanier
- 7 Eden
- 8 Weidrim

- ROAD CLASSIFICATION
- Expressway
  - Secondary Hwy
  - Ramp
  - Local Connector
  - Local Road
  - 4WD
  - US Route
  - State Route

GUYTON, GA  
2020

