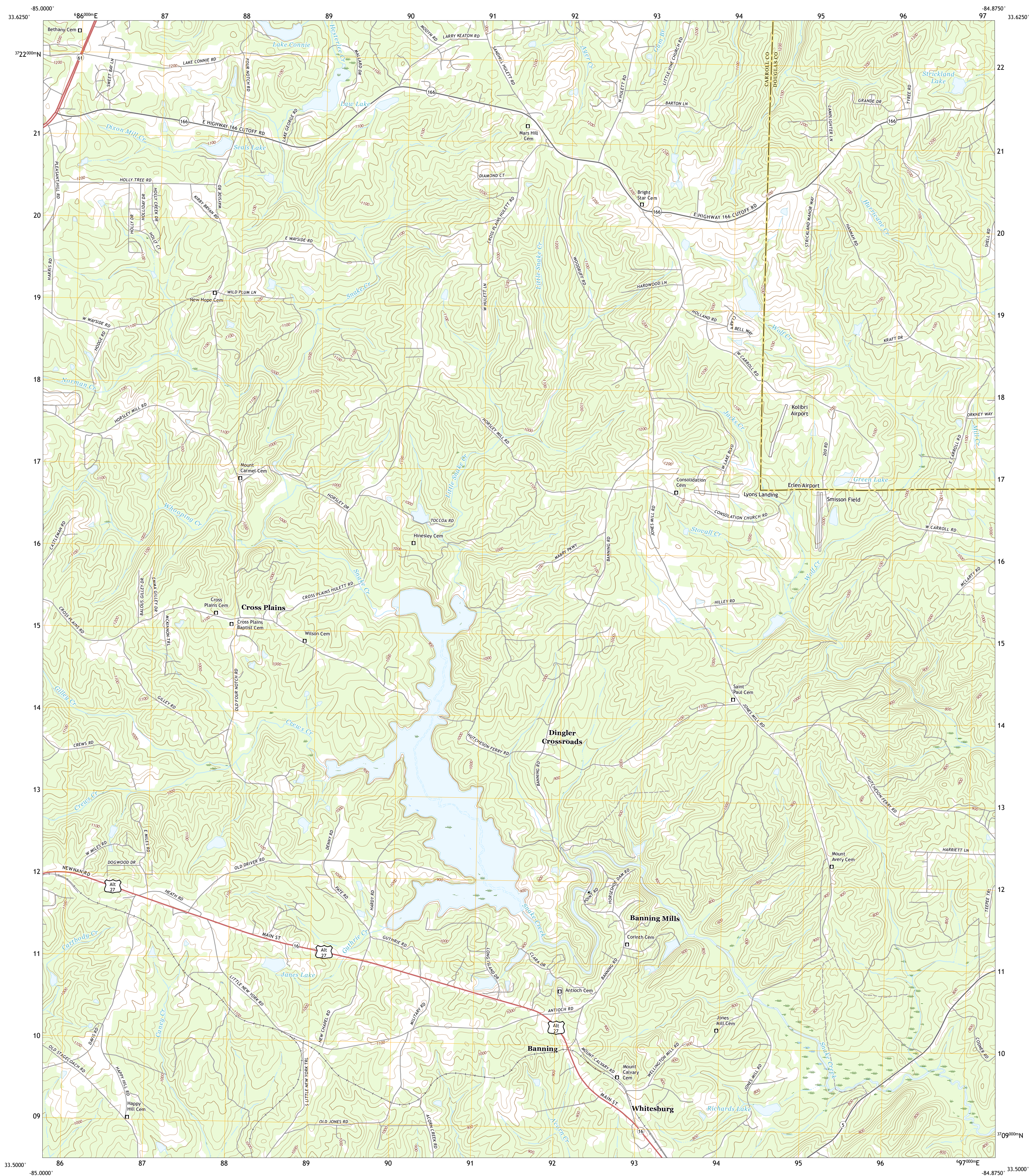




U.S. DEPARTMENT OF THE INTERIOR
U.S. GEOLOGICAL SURVEY



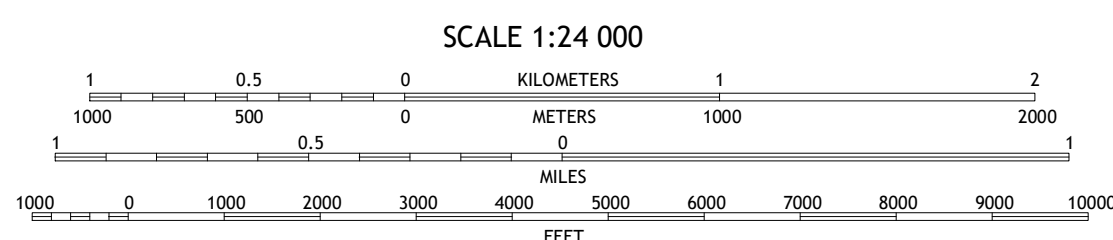
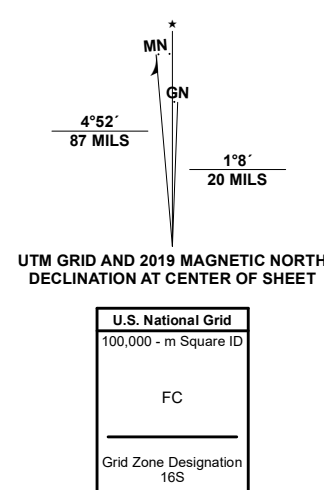
HULETT QUADRANGLE
GEORGIA
7.5-MINUTE SERIES



Produced by the United States Geological Survey

Produced by the United States Geological Survey
North American Datum of 1983 (NAD83)
World Geodetic System of 1984 (WGS84). Projection and
1 000-meter grid: Universal Transverse Mercator, Zone 16S
This map is not a legal document. Boundaries may be
generalized for this map scale. Private lands within government
reservations may not be shown. Obtain permission before
entering private lands.

Imagery.....	NAIP, October 2017 - December 2017	
Roads.....	U.S. Census Bureau,	2017
Names.....		GNIS, 1979 - 2020
Hydrography.....	National Hydrography Dataset	2005
Contour.....	National Elevation Dataset	2008 - 2009
Boundaries.....	Multiple sources; see metadata file	2018 - 2019
Wetlands.....	FWS National Wetlands Inventory	Not Available



CONTOUR INTERVAL 20 FEET
NORTH AMERICAN VERTICAL DATUM OF 1988

This map was produced to conform with the
National Geospatial Program US Topo Product Standard, 2011.
A metadata file associated with this product is draft version 0.6.18





QUADRANGLE LOCATION




1	2	3
4		5
6	7	8

1 Temple
 2 Villa Rica
 3 Winston
 4 Carrollton
 5 Rico
 6 Lowell
 7 Whitesburg
 8 Newnan North

ADJOINING QUADRANGLES

ROAD CLASSIFICATION

Expressway		Local Connector	
Secondary Hwy		Local Road	
Ramp		4WD	

 Interstate Route  US Route  State Route

HULETT, GA
2020

