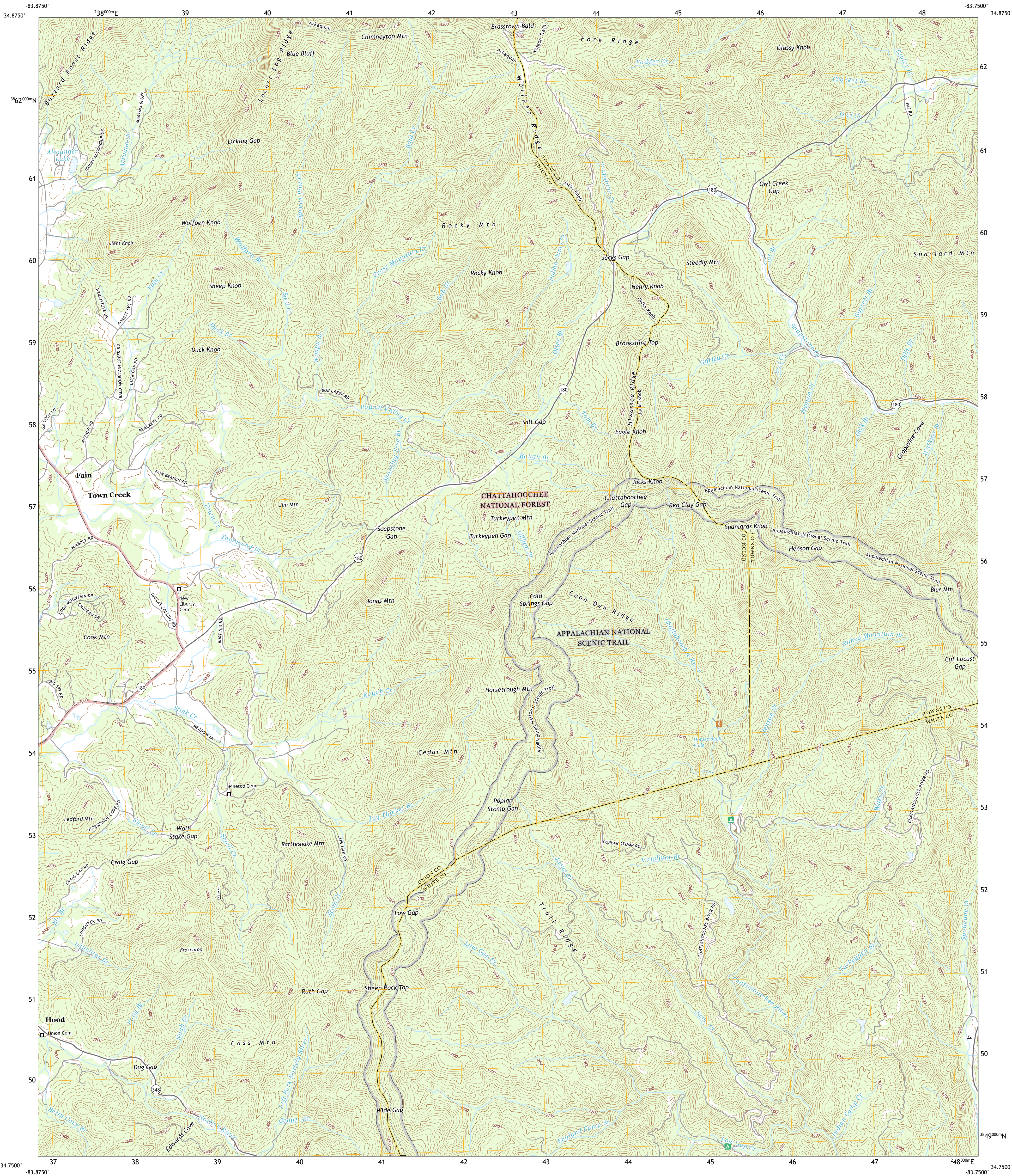




U.S. DEPARTMENT OF THE INTERIOR  
U.S. GEOLOGICAL SURVEY



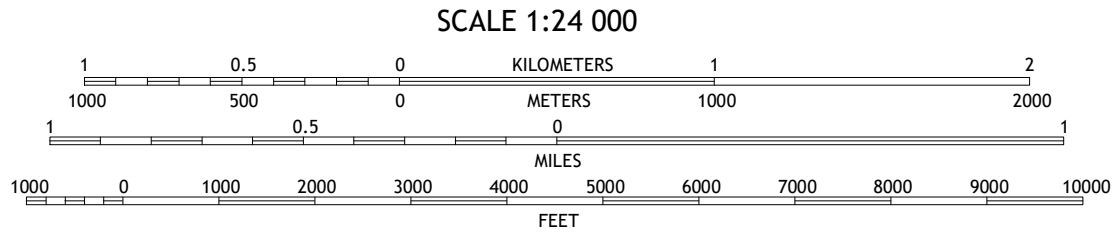
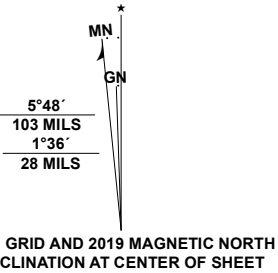
JACKS GAP QUADRANGLE  
GEORGIA  
7.5-MINUTE SERIES



Produced by the United States Geological Survey

North American Datum of 1983 (NAD83)  
World Geodetic System of 1984 (WGS84). Projection and  
1 000-meter grid: Universal Transverse Mercator, Zone 17S  
This map is not a legal document. Boundaries may be  
generalized for this map scale. Private lands within government  
reservations may not be shown. Obtain permission before  
entering private lands.

Imagery.....NAIP, September 2017 - December 2017  
Roads.....U.S. Census Bureau, 2017  
Roads within US Forest Service Lands.....FSTopo Data  
Names.....GNS, 1979 - 2019  
Hydrography.....National Hydrography Dataset, 2001 - 2019  
Contours.....National Elevation Dataset, 2010  
Boundaries.....Multiple sources; see metadata file 2019  
Wetlands.....FWS National Wetlands Inventory Not Available

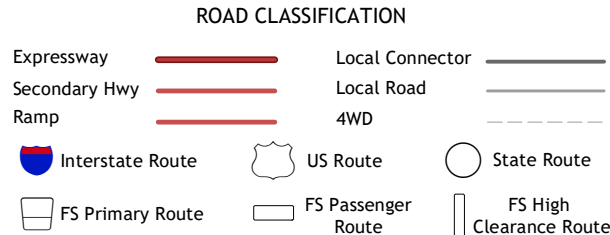


CONTOUR INTERVAL 40 FEET  
NORTH AMERICAN VERTICAL DATUM OF 1988  
This map was produced to conform with the  
National Geospatial Program US Topo Product Standard, 2011.  
A metadata file associated with this product is draft version 0.6.18



1	2	3
4	5	6
7	8	9

1 Blairsville  
2 Hiwassee  
3 Macedonia  
4 Coosa Bald  
5 Tray Mountain  
6 Neels Gap  
7 Cowrock  
8 Helen



Check with local Forest Service unit  
for current travel conditions and restrictions.

**JACKS GAP, GA**  
**2020**

