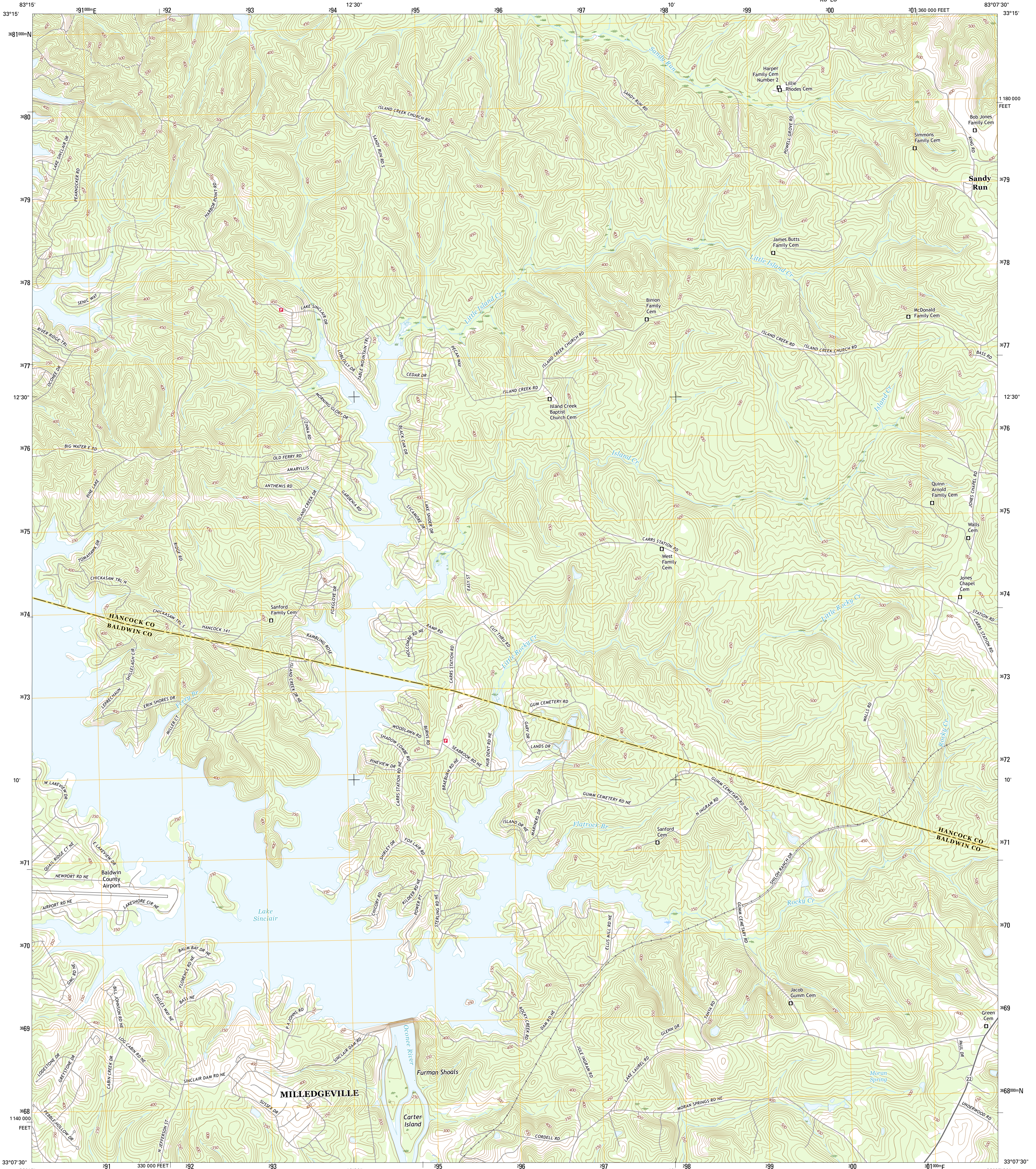




U.S. DEPARTMENT OF THE INTERIOR
U.S. GEOLOGICAL SURVEY



LAKE SINCLAIR EAST QUADRANGLE
GEORGIA
7.5-MINUTE SERIES

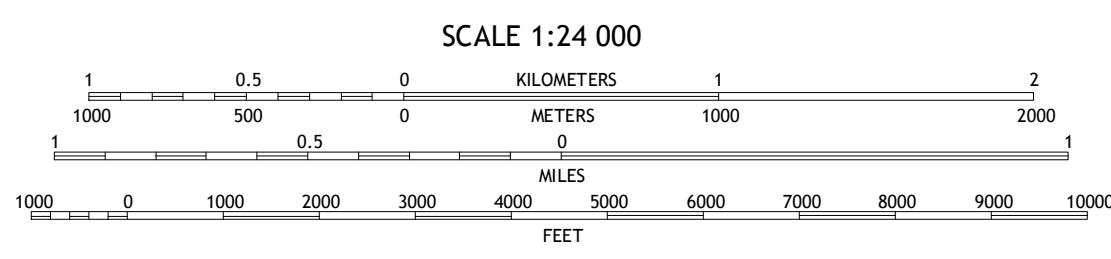
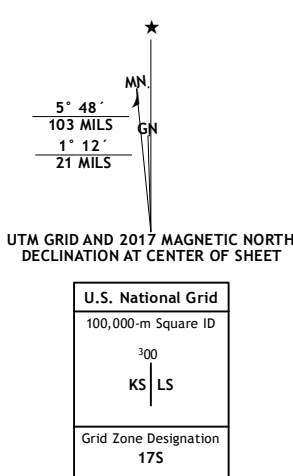


Produced by the United States Geological Survey

North American Datum of 1983 (NAD83)
World Geodetic System of 1984 (WGS84) Projection and
1 000-meter grid: Universal Transverse Mercator, Zone 17S
10 000-foot ticks: Georgia Coordinate System of 1983 (east zone)

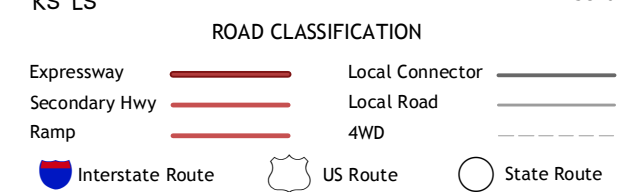
This map is not a legal document. Boundaries may be generalized for this map scale. Private lands within government reservations may not be shown. Obtain permission before entering private lands.

Imagery.....NAIP, December 2015
Roads.....U.S. Census Bureau, 2015 - 2016
Names.....GNIS, 2016
Hydrography.....National Hydrography Dataset, 2015
Contours.....National Elevation Dataset, 2008
Boundaries.....Multiple sources; see metadata file 1972 - 2016
Wetlands.....FWS National Wetlands Inventory 1977 - 2014



CONTOUR INTERVAL 10 FEET
NORTH AMERICAN VERTICAL DATUM OF 1988

This map was produced to conform with the
National Geospatial Program US Topo Product Standard, 2011.
A metadata file associated with this product is draft version 0.6.19



1	2	3
4	5	6
7	8	

ADJOINING QUADRANGLES

- 1 Meda
- 2 Rockville
- 3 Shoulderbone
- 4 Lake Sinclair West
- 5 Devereux
- 6 Browns Crossing
- 7 Milledgeville
- 8 Friendship

LAKE SINCLAIR EAST, GA
2017

