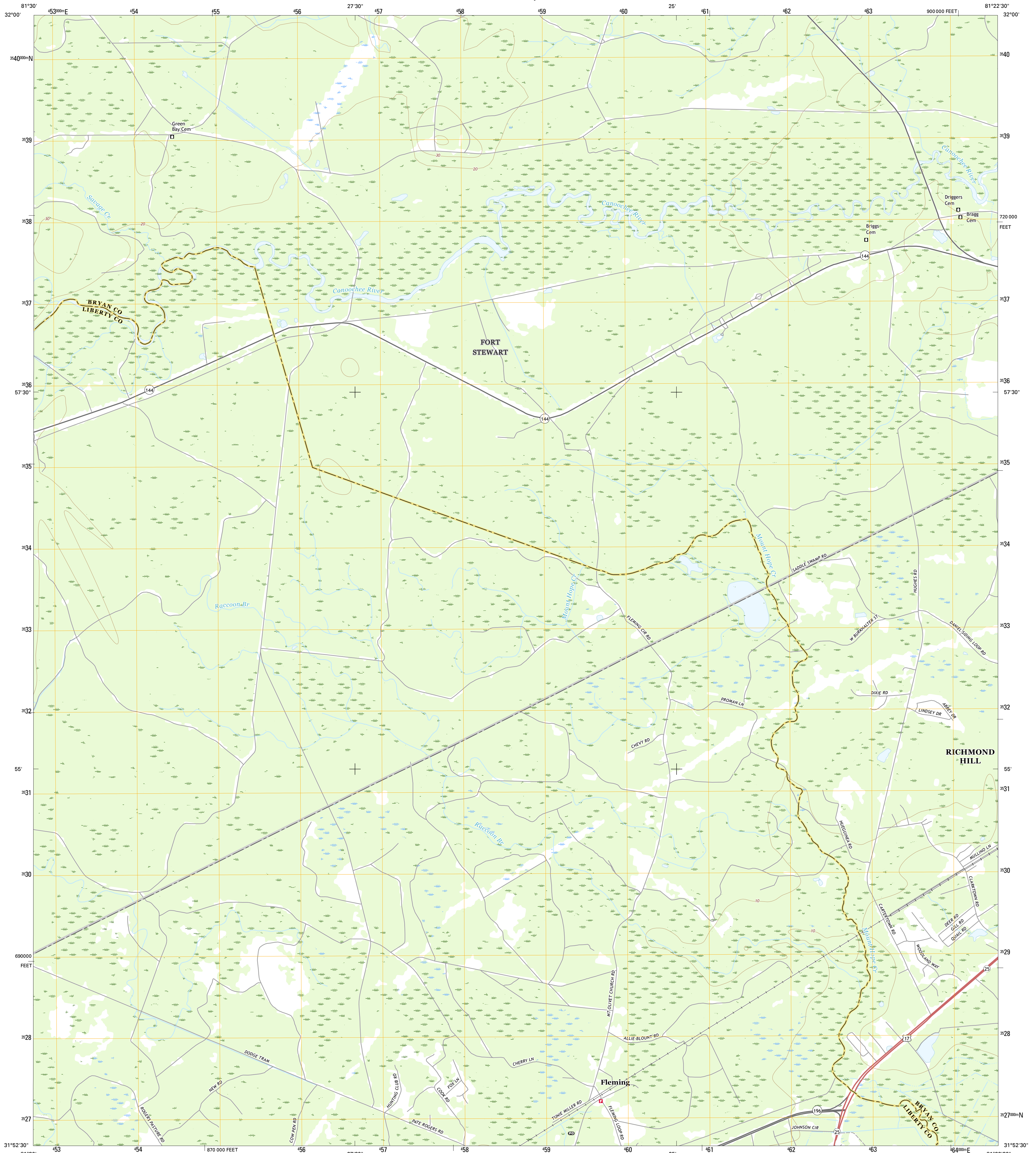




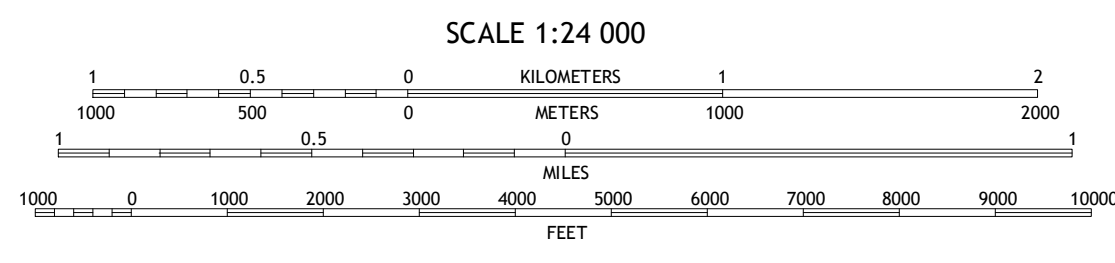
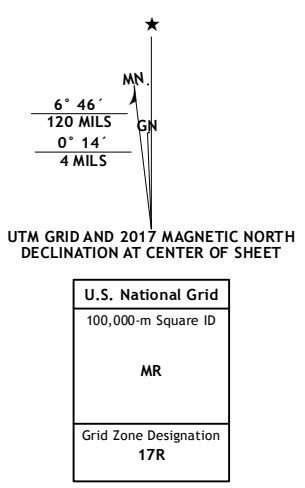
U.S. DEPARTMENT OF THE INTERIOR
U.S. GEOLOGICAL SURVEY



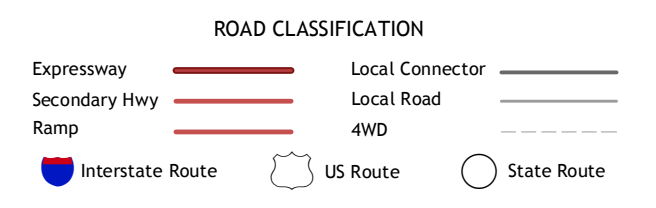
LIMERICK NW QUADRANGLE
GEORGIA
7.5-MINUTE SERIES



Produced by the United States Geological Survey
 North American Datum of 1983 (NAD83)
 World Geodetic System of 1984 (WGS84) Projection and
 1 000-meter grid: Universal Transverse Mercator, Zone 17R
 10 000-foot ticks: Georgia Coordinate System of 1983 (east
 zone)
 This map is not a legal document. Boundaries may be
 generalized for this map scale. Private lands within government
 reservations may not be shown. Obtain permission before
 entering private lands.
 Imagery.....NAIP, December 2015
 Roads.....U.S. Census Bureau, 2015 - 2016
 Names.....GNIS, 2016
 Hydrography.....National Hydrography Dataset, 2015
 Contours.....National Elevation Dataset, 2008
 Boundaries.....Multiple sources; see metadata file 1972 - 2016
 Wetlands.....FWS National Wetlands Inventory 1977 - 2014



CONTOUR INTERVAL 10 FEET
 NORTH AMERICAN VERTICAL DATUM OF 1988
 This map was produced to conform with the
 National Geospatial Program US Topo Product Standard, 2011.
 A metadata file associated with this product is draft version 0.6.19



1	2	3
4	5	6
7	8	

1 Letford
 2 Melgrim SW
 3 Melgrim SE
 4 Trinity
 5 Richmond Hill
 6 Mineville
 7 Dorchester
 8 Limerick SE

LIMERICK NW, GA
 2017

