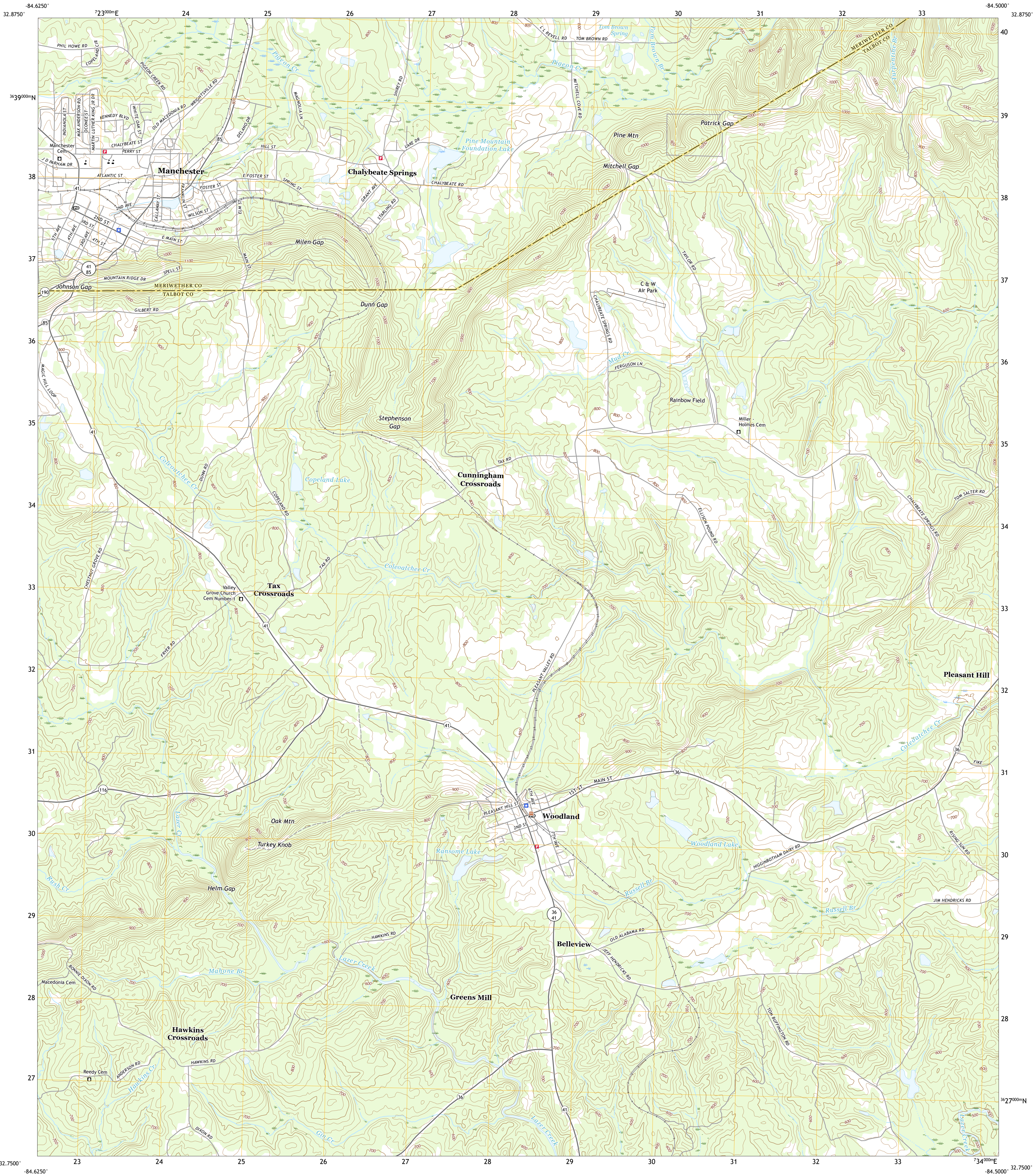




U.S. DEPARTMENT OF THE INTERIOR  
U.S. GEOLOGICAL SURVEY



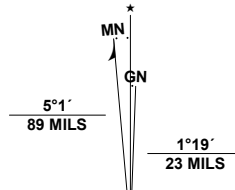
MANCHESTER QUADRANGLE  
GEORGIA  
7.5-MINUTE SERIES



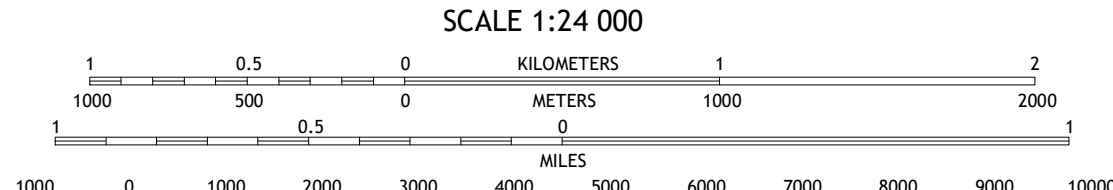
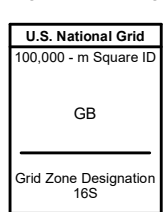
Produced by the United States Geological Survey

North American Datum of 1983 (NAD83)  
World Geodetic System of 1984 (WGS84), Projection and  
1 000-meter grid/Universal Transverse Mercator, Zone 16S  
This map is not a legal document. Boundaries may be  
generalized for this map scale. Private lands within government  
reservations may not be shown. Obtain permission before  
entering private lands.

Imagery.....NAIP, September 2017 - December 2017  
Roads.....U.S. Census Bureau, 2017  
Names.....GNS, 1979 - 2020  
Hydrography.....National Hydrography Dataset, 1899 - 2019  
Contours.....National Elevation Dataset, 2018  
Boundaries.....Multiple sources; see metadata file 2018 - 2019  
Wetlands.....FWS National Wetlands Inventory Not Available



UTM GRID AND 2019 MAGNETIC NORTH  
DECLINATION AT CENTER OF SHEET



CONTOUR INTERVAL 20 FEET  
NORTH AMERICAN VERTICAL DATUM OF 1988  
This map was produced to conform with the  
National Geospatial Program US Topo Product Standard, 2011.  
A metadata file associated with this product is draft version 0.6.18



QUADRANGLE LOCATION

1	2	3
4	5	6
7	8	9

1 Warm Springs  
2 Woodbury  
3 Sunset Village  
4 Shiloh  
5 Waverly Hall  
6 Baldwinsville  
7 Talbotton  
8 Baldwinville

ROAD CLASSIFICATION  
Expressway  
Secondary Hwy  
Ramp  
Local Connector  
Local Road  
4WD  
US Route  
State Route

MANCHESTER, GA  
2020



NSN 7540-01-603-0163  
USGS X 2.4 K 2.7 1.8  
NSA REF NO.