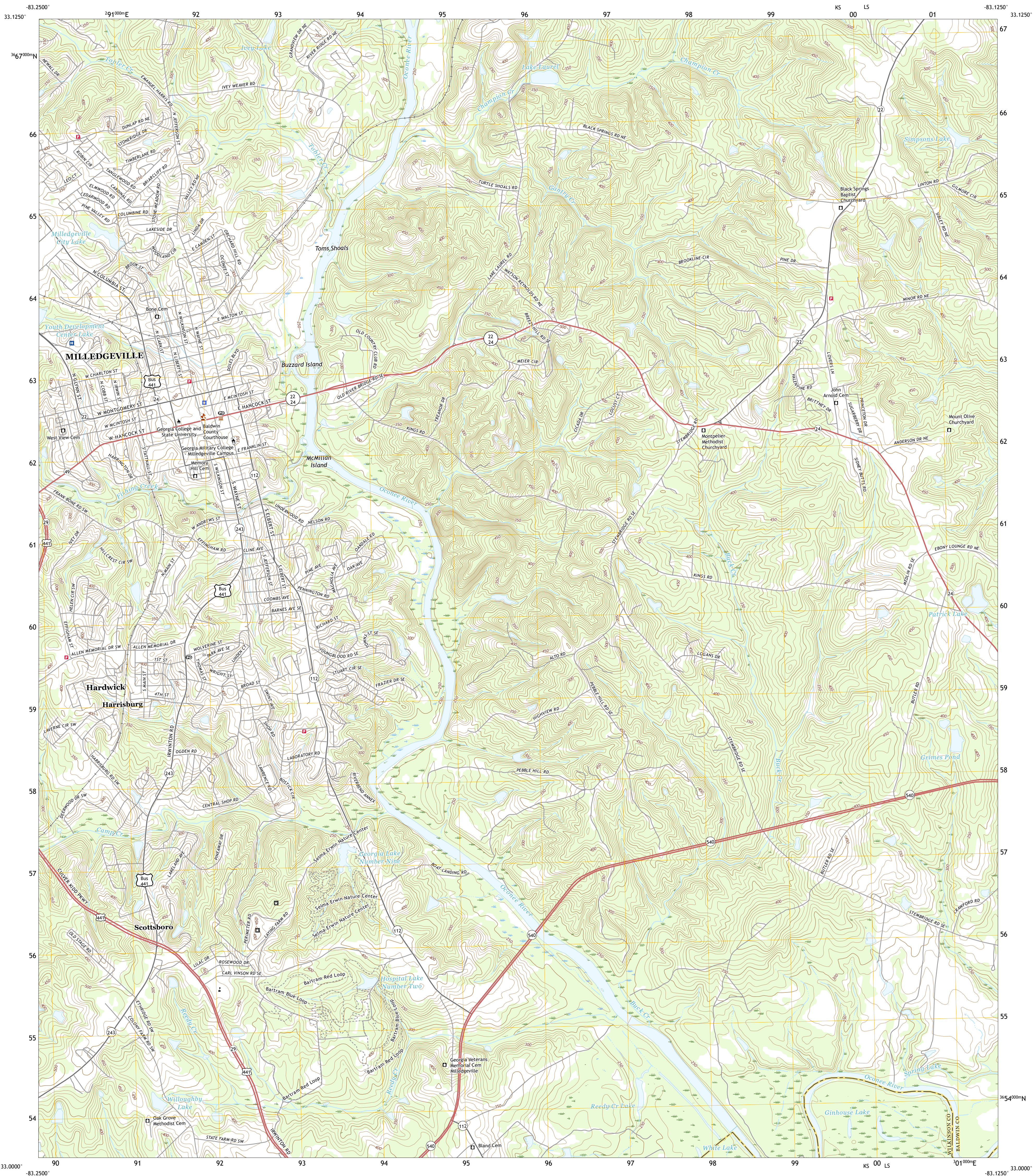




U.S. DEPARTMENT OF THE INTERIOR
U.S. GEOLOGICAL SURVEY



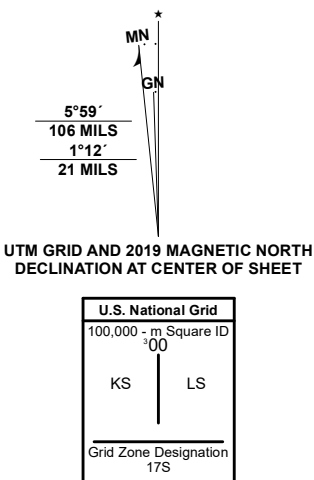
MILLEDGEVILLE QUADRANGLE
GEORGIA
7.5-MINUTE SERIES



Produced by the United States Geological Survey

North American Datum of 1983 (NAD83)
World Geodetic System of 1984 (WGS84) Projection and
1 000-meter grid/Universal Transverse Mercator, Zone 17S
This map is not a legal document. Boundaries may be
generalized for this map scale. Private lands within government
reservations may not be shown. Obtain permission before
entering private lands.

Imagery	NAIP, September 2017 - December 2017
Roads	U.S. Census Bureau, 2017
Names	GNS, 1979 - 2020
Hydrography	National Hydrography Dataset, 2002 - 2019
Contours	National Elevation Dataset, 2008
Boundaries	Multiple sources; see metadata file 2018 - 2019
Wetlands	FWS National Wetlands Inventory Not Available



CONTOUR INTERVAL 10 FEET
NORTH AMERICAN VERTICAL DATUM OF 1988
This map was produced to conform with the
National Geospatial Program US Topo Product Standard, 2011.
A metadata file associated with this product is draft version 0.6.18



1	2	3
4	5	6
7	8	9

1 Lake Sinclair East
2 Lake Sinclair West
3 Devereux
4 Browns Crossing
5 Friendship
6 Gordon
7 Napier Pond
8 Gum Pond

ROAD CLASSIFICATION

Expressway	Local Connector
Secondary Hwy	Local Road
Ramp	4WD
Interstate Route	US Route
	State Route

MILLEDGEVILLE, GA
2020



NSN 1643016361829
NSA REF NO. USGS X 2 4 K 2 9 3 0 6