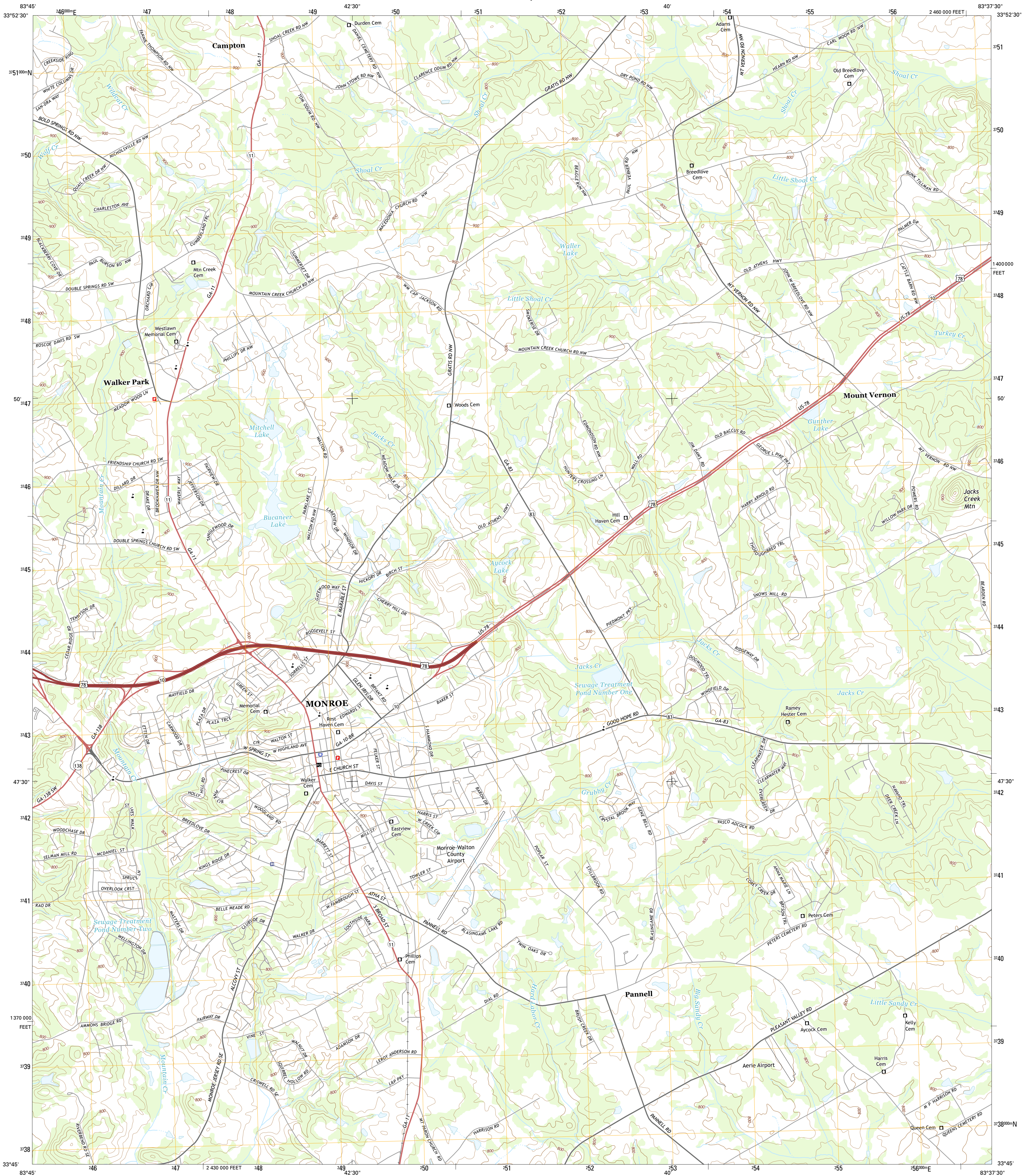




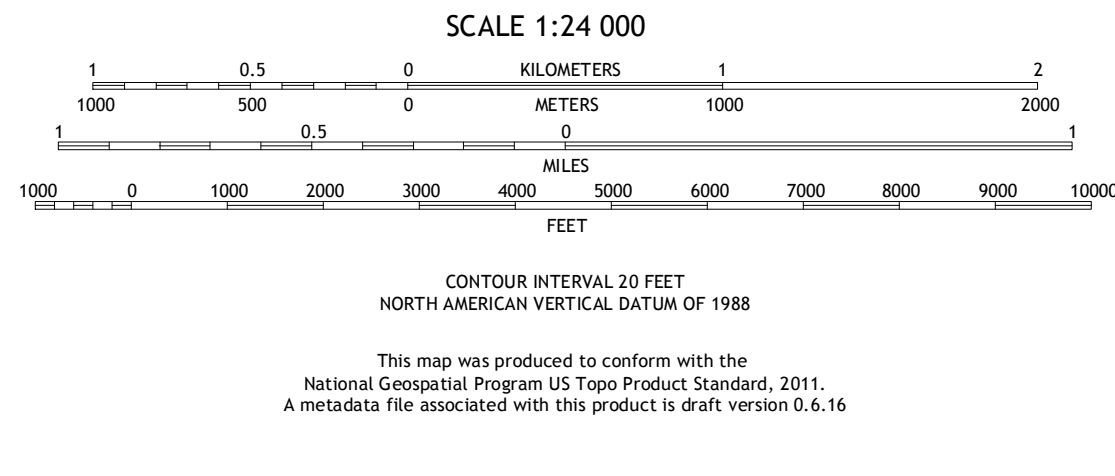
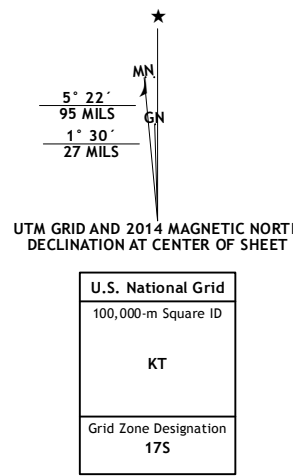
U.S. DEPARTMENT OF THE INTERIOR
U.S. GEOLOGICAL SURVEY



MONROE QUADRANGLE
GEORGIA-WALTON CO.
7.5-MINUTE SERIES



Produced by the United States Geological Survey
North American Datum of 1983 (NAD83)
World Geodetic System of 1984 (WGS84) Projection and
1 000-meter grid: Universal Transverse Mercator, Zone 17S
10 000-foot ticks: Georgia Coordinate System of 1983 (west zone)
This map is not a legal document. Boundaries may be
generalized for this map scale. Private lands within government
reservations may not be shown. Obtain permission before
entering private lands.
Imagery:.....NAIP, September 2010
Roads:.....HERE, ©2013
Names:.....GNIS, 2013
Hydrography:.....National Hydrography Dataset, 2010
Contours:.....National Elevation Dataset, 2012
Boundaries:.....Multiple sources; see metadata file 1972 - 2013



ROAD CLASSIFICATION	
Expressway	Local Connector
Secondary Hwy	Local Road
Ramp	4WD
Interstate Route	US Route
	State Route

1	2	3
4	5	6
7	8	9

1 Bold Springs
2 Winder South
3 Statham
4 Between
5 High Shoals
6 Jersey
7 Social Circle
8 Rutledge North

MONROE, GA
2014

