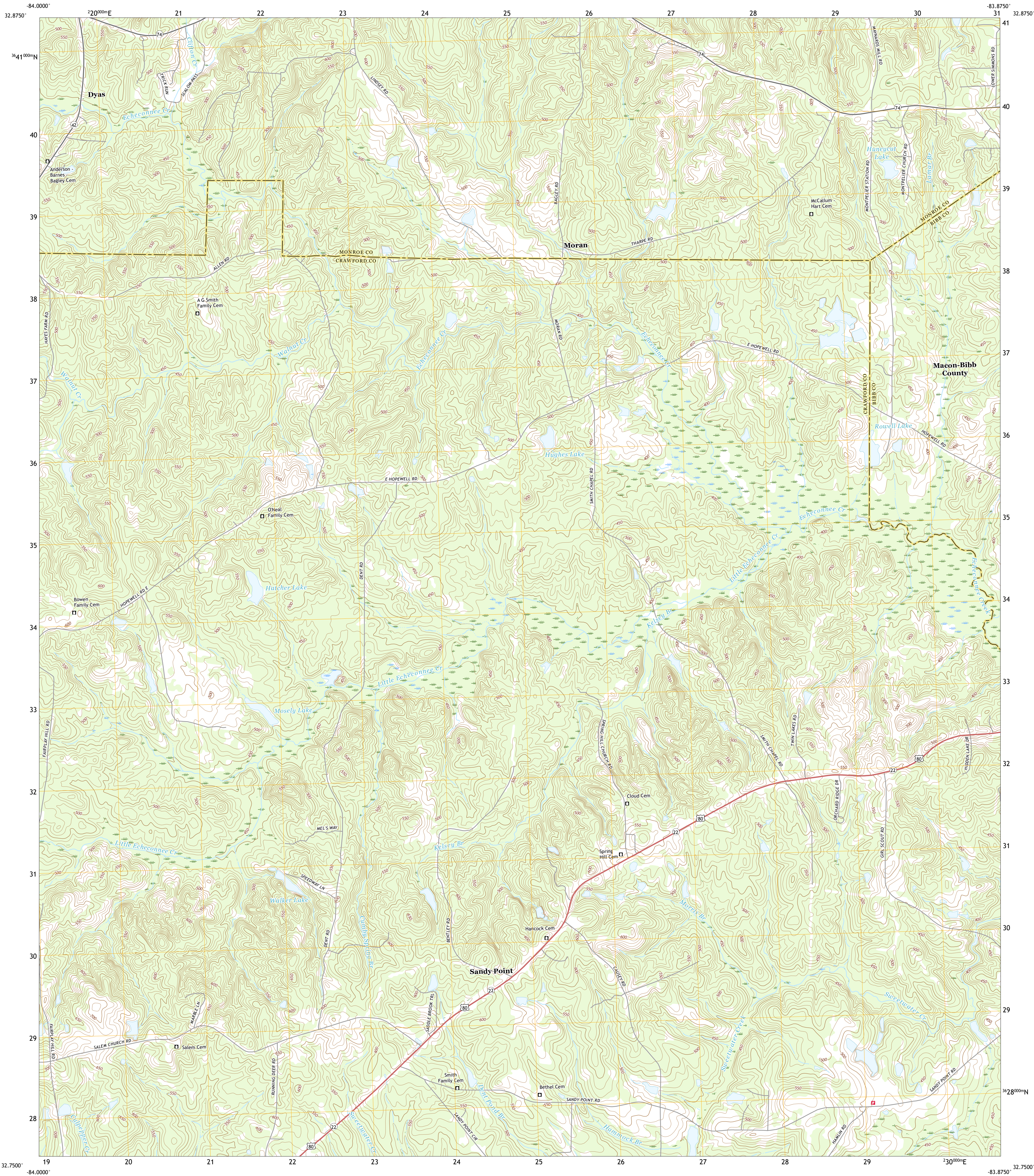




U.S. DEPARTMENT OF THE INTERIOR
U.S. GEOLOGICAL SURVEY



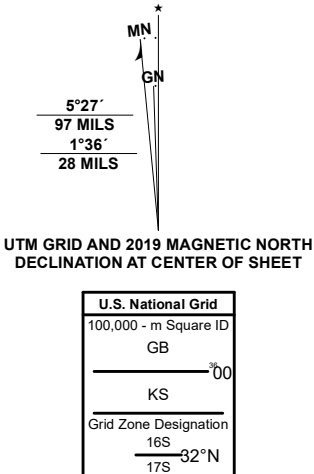
MORAN QUADRANGLE
GEORGIA
7.5-MINUTE SERIES



Produced by the United States Geological Survey

North American Datum of 1983 (NAD83)
World Geodetic System of 1984 (WGS84). Projection and
1 000-meter grid/Universal Transverse Mercator, Zone 16S1775
This map is not a legal document. Boundaries may be
generalized for this map scale. Private lands within government
reservations may not be shown. Obtain permission before
entering private lands.

Imagery.....NAIP, August 2017 - December 2017
Roads.....U.S. Census Bureau, 2017
Names.....GNIS, 1979 - 2020
Hydrography.....National Hydrography Dataset, 1899 - 2019
Contours.....National Elevation Dataset, 2008 - 2012
Boundaries.....Multiple sources; see metadata file 2018 - 2019
Wetlands.....FWS National Wetlands Inventory Not Available



CONTOUR INTERVAL 10 FEET
NORTH AMERICAN VERTICAL DATUM OF 1988
This map was produced to conform with the
National Geospatial Program US Topo Product Standard, 2011.
A metadata file associated with this product is draft version 0.6.18



1	2	3
4	5	6
7	8	

1 Strouds
2 Smarr
3 Bolingbroke
4 Calloway
5 Lizella
6 Roberta
7 Knoxville
8 Byron

ROAD CLASSIFICATION
Expressway
Secondary Hwy
Ramp
Local Connector
Local Road
4WD
US Route
State Route

MORAN, GA
2020

