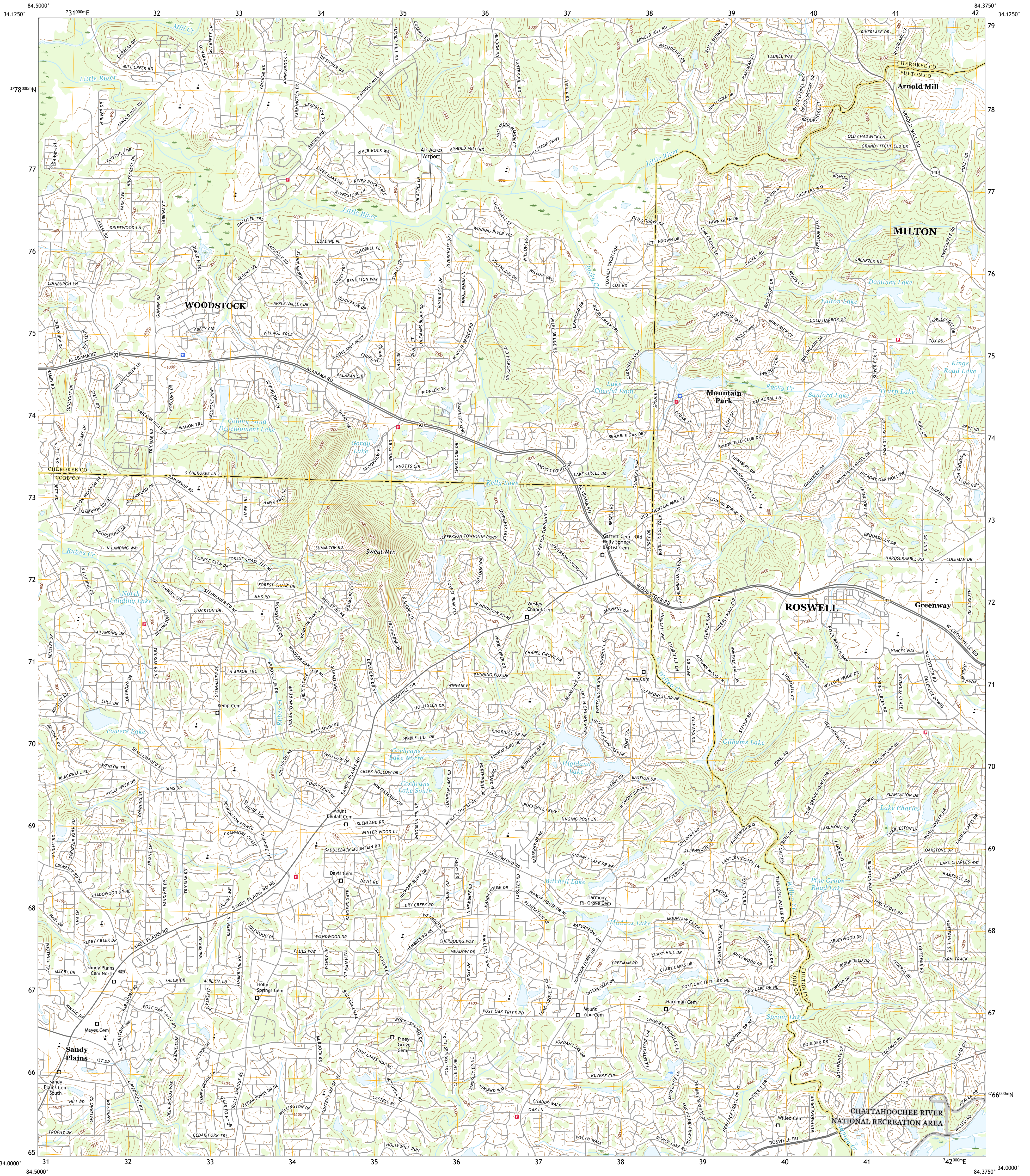




U.S. DEPARTMENT OF THE INTERIOR
U.S. GEOLOGICAL SURVEY



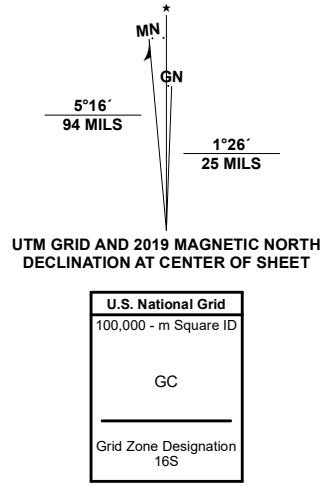
MOUNTAIN PARK QUADRANGLE
GEORGIA
7.5-MINUTE SERIES



Produced by the United States Geological Survey

North American Datum of 1983 (NAD83)
World Geodetic System of 1984 (WGS84) Projection and
1 000-meter grid/Universal Transverse Mercator, Zone 16S
This map is not a legal document. Boundaries may be
generalized for this map scale. Private lands within government
reservations may not be shown. Obtain permission before
entering private lands.

ImageryNAIP, September 2017 - December 2017
RoadsU.S. Census Bureau, 2017
NamesGNS, 1979 - 2020
HydrographyNational Hydrography Dataset, 1899 - 2019
ContoursNational Elevation Dataset, 2008
BoundariesMultiple sources; see metadata file 2018 - 2019
WetlandsFWS National Wetlands Inventory Not Available



CONTOUR INTERVAL 20 FEET
NORTH AMERICAN VERTICAL DATUM OF 1988

This map was produced to conform with the
National Geospatial Program US Topo Product Standard, 2011.
A metadata file associated with this product is draft version 0.6.18



1	2	3
4	5	6
7	8	

1 South Canton
2 Canton
3 Birmingham
4 Kennesaw
5 Roswell
6 Marietta
7 Sandy Springs
8 Chamblee

ROAD CLASSIFICATION	
Expressway	Local Connector
Secondary Hwy	Local Road
Ramp	4WD
Interstate Route	US Route
	State Route

MOUNTAIN PARK, GA
2020



NSA REF. NO. USGS X 2 4 K 3 0 9 4 0