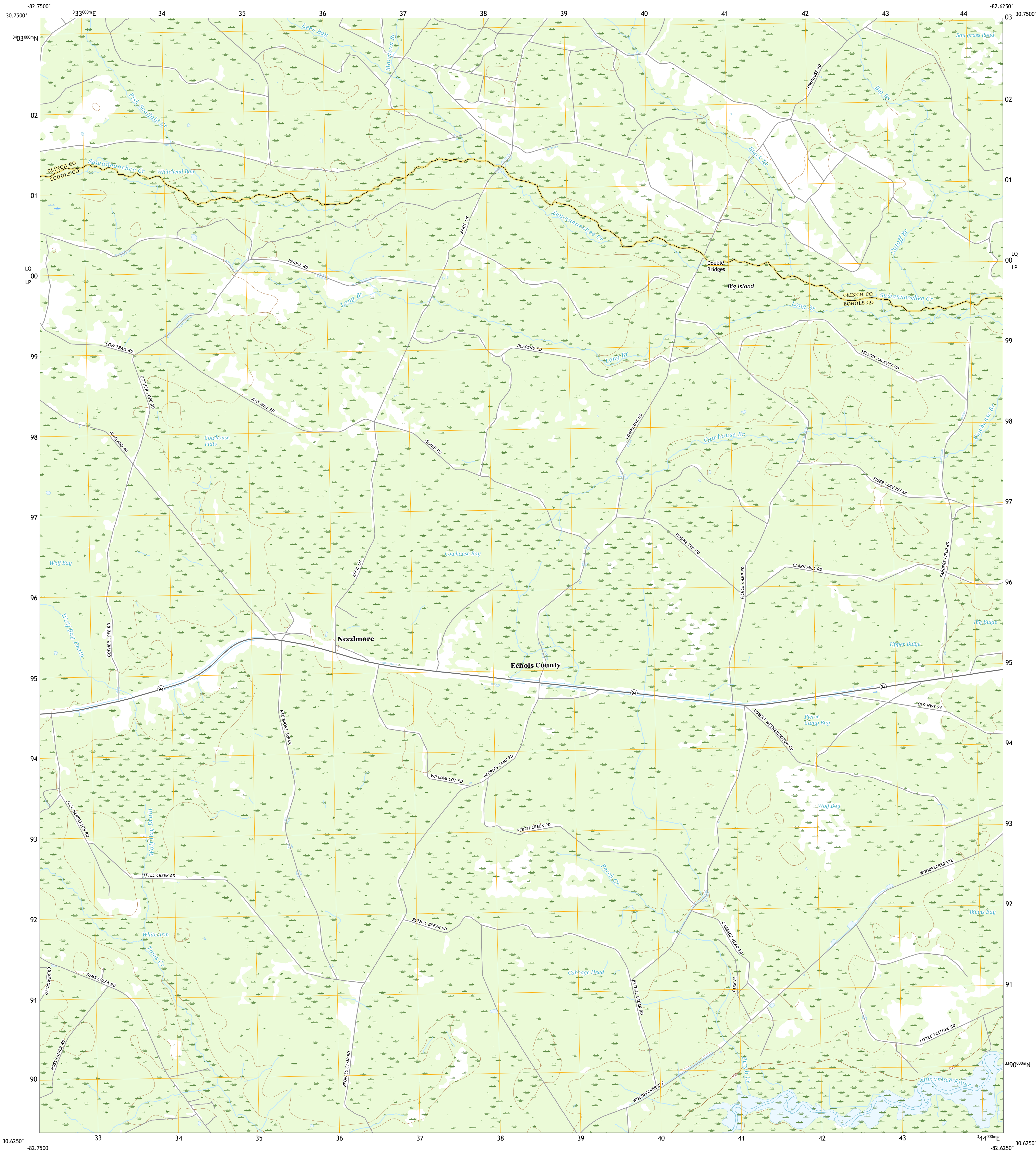




U.S. DEPARTMENT OF THE INTERIOR
U.S. GEOLOGICAL SURVEY



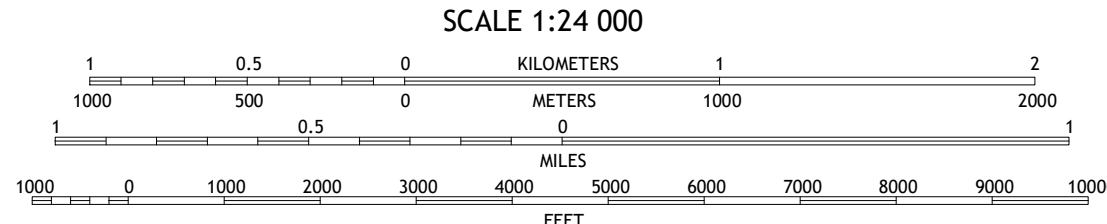
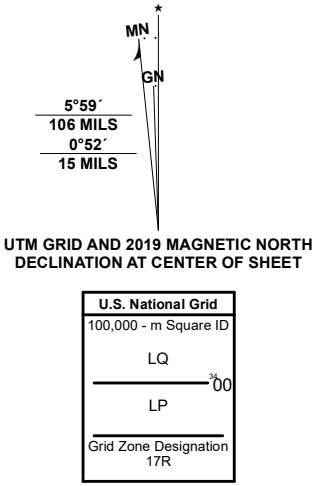
NEEDMORE QUADRANGLE
GEORGIA
7.5-MINUTE SERIES



Produced by the United States Geological Survey

North American Datum of 1983 (NAD83)
World Geodetic System of 1984 (WGS84)
1 000-meter grid/Universal Transverse Mercator, Zone 17R
This map is not a legal document. Boundaries may be generalized for this map scale. Private lands within government reservations may not be shown. Obtain permission before entering private lands.

Imagery.....NAIP, October 2017 - December 2017
Roads.....U.S. Census Bureau, 2017
Names.....GNIS, 1979 - 2020
Hydrography.....National Hydrography Dataset, 1999 - 2020
Contours.....National Elevation Dataset, 2008 - 2012
Boundaries.....Multiple sources; see metadata file 2018 - 2019
Wetlands.....FWS National Wetlands Inventory Not Available



QUADRANGLE LOCATION

1	2	3
4	5	6
7	8	9

1 Thelma
2 Headlight
3 Colon
4 Pine Island
5 Fargo
6 Cypress Creek
7 Fargo SW
8 Council

ROAD CLASSIFICATION
Expressway
Secondary Hwy
Ramp
Local Connector
Local Road
4WD
US Route
State Route

CONTOUR INTERVAL 10 FEET
NORTH AMERICAN VERTICAL DATUM OF 1988
This map was produced to conform with the National Geospatial Program US Topo Product Standard, 2011. A metadata file associated with this product is draft version 0.6.18

NEEDMORE, GA
2020

