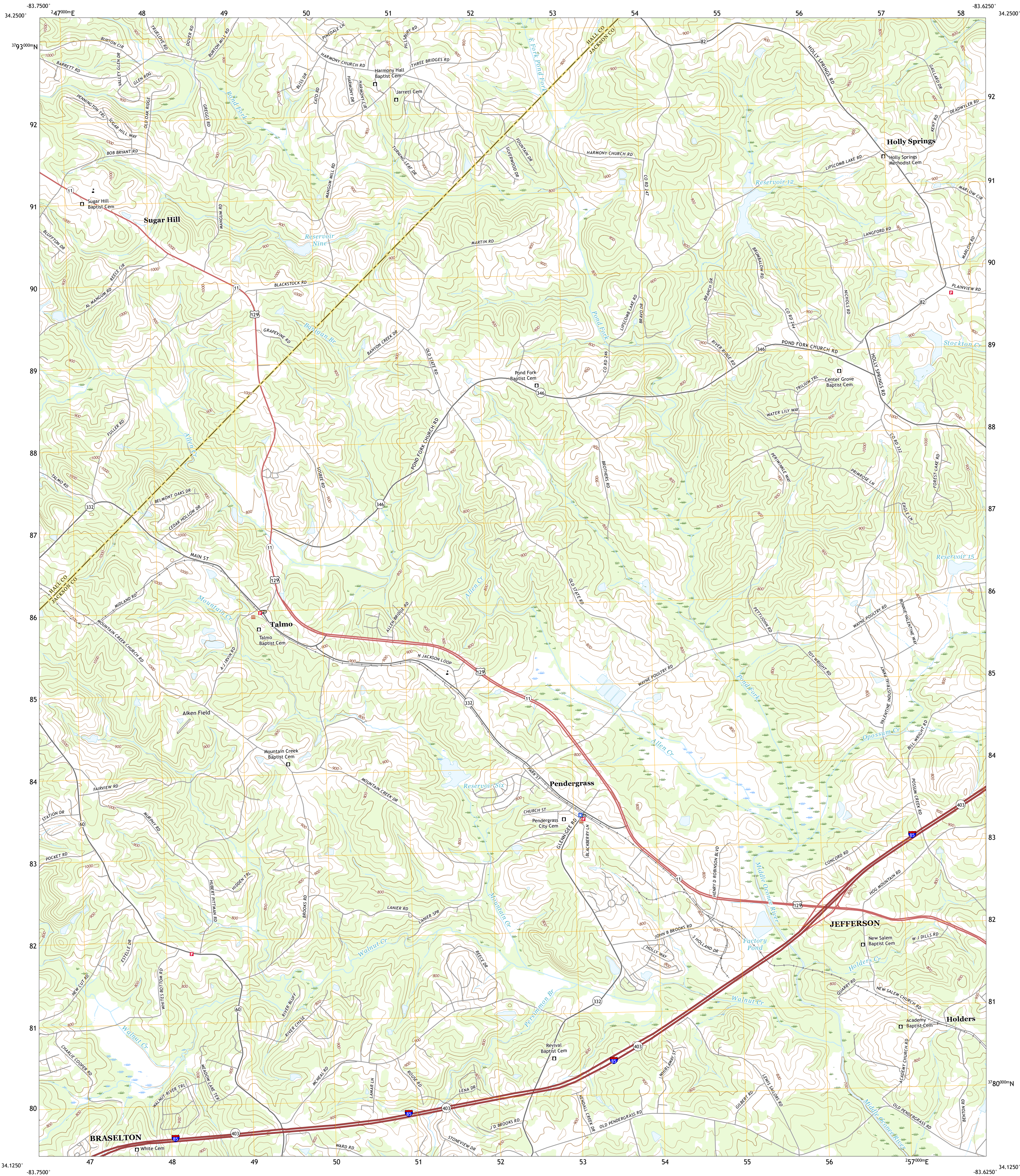




U.S. DEPARTMENT OF THE INTERIOR
U.S. GEOLOGICAL SURVEY



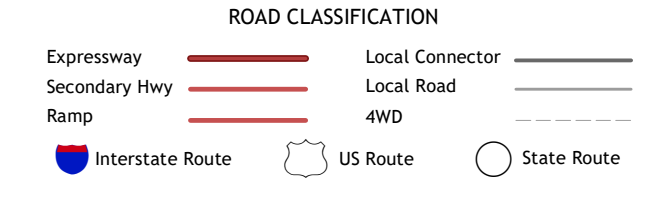
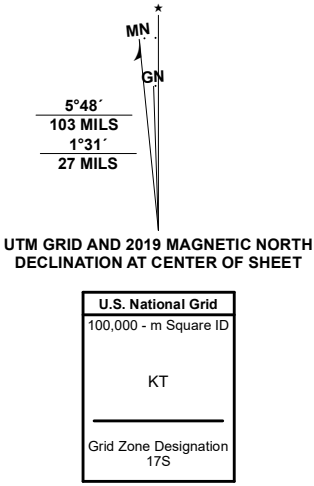
PENDERGRASS QUADRANGLE
GEORGIA
7.5-MINUTE SERIES



Produced by the United States Geological Survey

North American Datum of 1983 (NAD83)
World Geodetic System of 1984 (WGS84) - Projection and
1 000-meter grid/Universal Transverse Mercator, Zone 17S
This map is not a legal document. Boundaries may be
generalized for this map scale. Private lands within government
reservations may not be shown. Obtain permission before
entering private lands.

| | |
|-------------|--|
| Imagery |NAIP, September 2017 - December 2017 |
| Roads |U.S. Census Bureau, 2017 |
| Names |GNS, 1979 - 2020 |
| Hydrography |National Hydrography Dataset, 2002 - 2019 |
| Contours |National Elevation Dataset, 2009 - 2010 |
| Boundaries |Multiple sources; see metadata file 2016 - 2019 |
| Wetlands |FWS National Wetlands Inventory Not Available |



| | | |
|---|---|---|
| 1 | 2 | 3 |
| 4 | 5 | 6 |
| 7 | 8 | 9 |

PENDERGRASS, GA
2020

