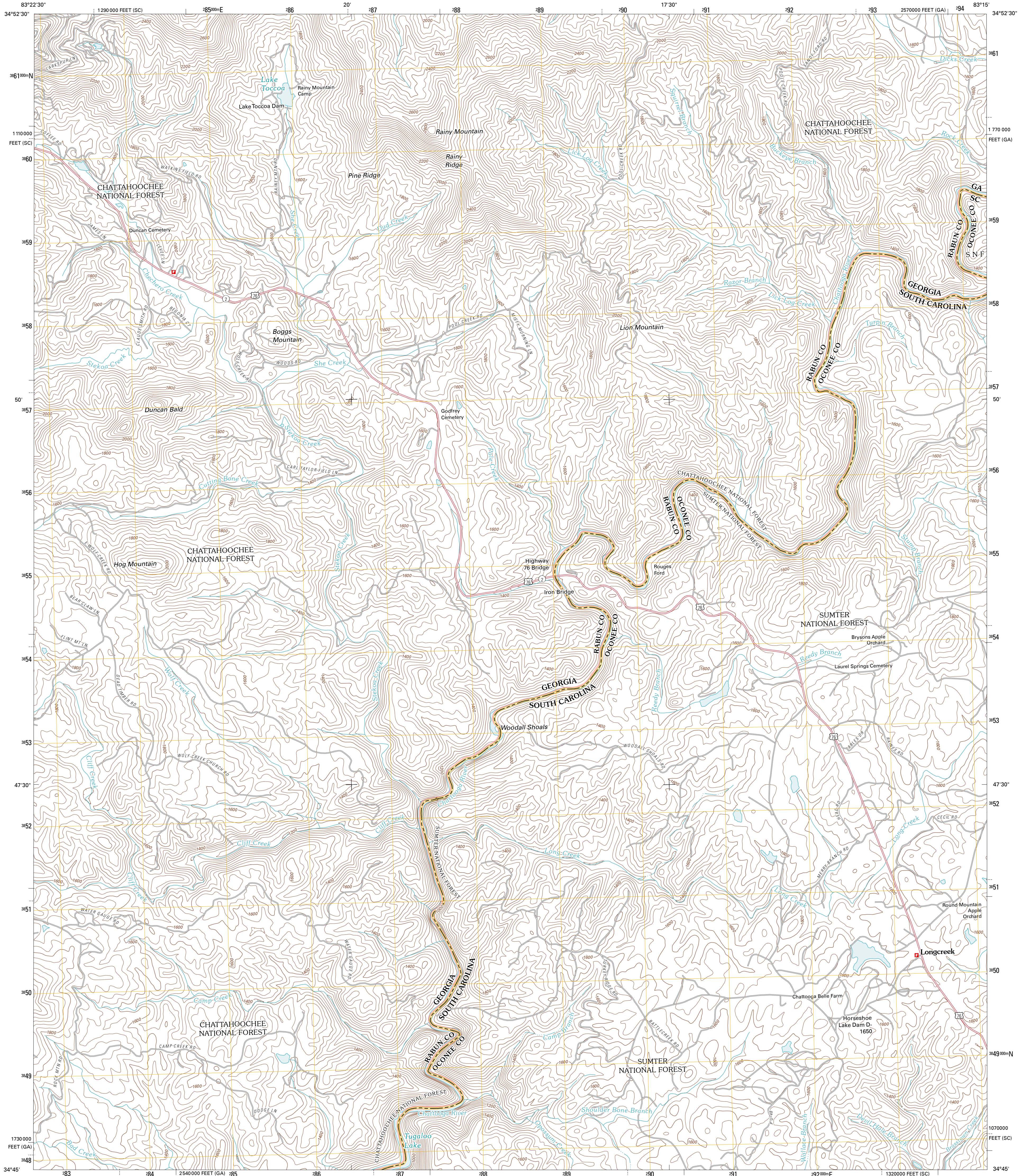




U.S. DEPARTMENT OF THE INTERIOR  
U. S. GEOLOGICAL SURVEY



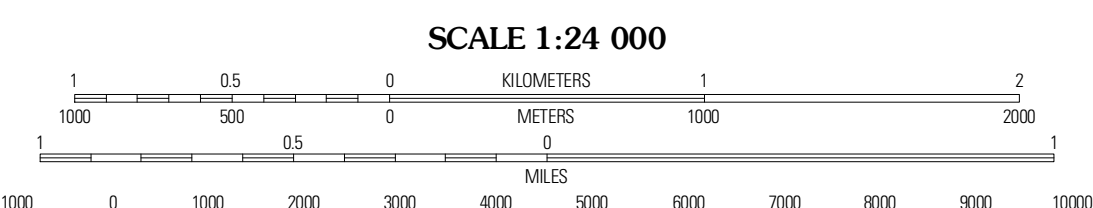
RAINY MOUNTAIN QUADRANGLE  
GEORGIA-SOUTH CAROLINA  
7.5-MINUTE SERIES



Produced by the United States Geological Survey  
North American Datum of 1983 (NAD83)  
World Geodetic System of 1984 (WGS84). Projection and  
1000-foot grid: Universal Transverse Mercator, Zone 17S  
10 000-foot ticks: Georgia Coordinate System of 1983 (west  
zone), South Carolina Coordinate System of 1983

UTM GRID AND 2011 MAGNETIC NORTH  
DECLINATION AT CENTER OF SHEET

U.S. National Grid  
100,000m Square ID  
KU  
Grid Zone Designation  
17S



CONTOUR INTERVAL 40 FEET  
NORTH AMERICAN VERTICAL DATUM OF 1988

This map was produced to conform with version 0.5.10  
of the USGS US Topo Product Standard.  
A metadata file associated with this product is draft version 0.5.16



QUADRANGLE LOCATION

Dillard	Rabun Bald	Satoh
Tiger	Rainy Mountain	Whetstone
Tallah	Tugaloo Lake	Holly Springs

ADJOINING 7.5' QUADRANGLES

**ROAD CLASSIFICATION**

Interstate Route  
US Route  
Ramp  
State Route  
Local Road  
4WD  
US Route  
FS Passenger Route  
FS Primary Route  
State Route  
Dashed Line  
FS High Clearance Route

Check with local Forest Service unit  
for current travel conditions and restrictions.

RAINY MOUNTAIN, GA-SC  
2011

Imagery:.....NAP, September 2009  
Roads:.....©2006-2010 Tele Atlas  
Roads within US Forest Service Lands:.....FSTopo Data  
with limited Forest Service updates, 2009  
Names:.....GNIS, 2010  
Hydrography:.....National Hydrography Dataset, 2009  
Contours:.....National Elevation Dataset, 2010  
Boundaries:.....Census, IBWC, IBC, USGS, 1972 - 2010