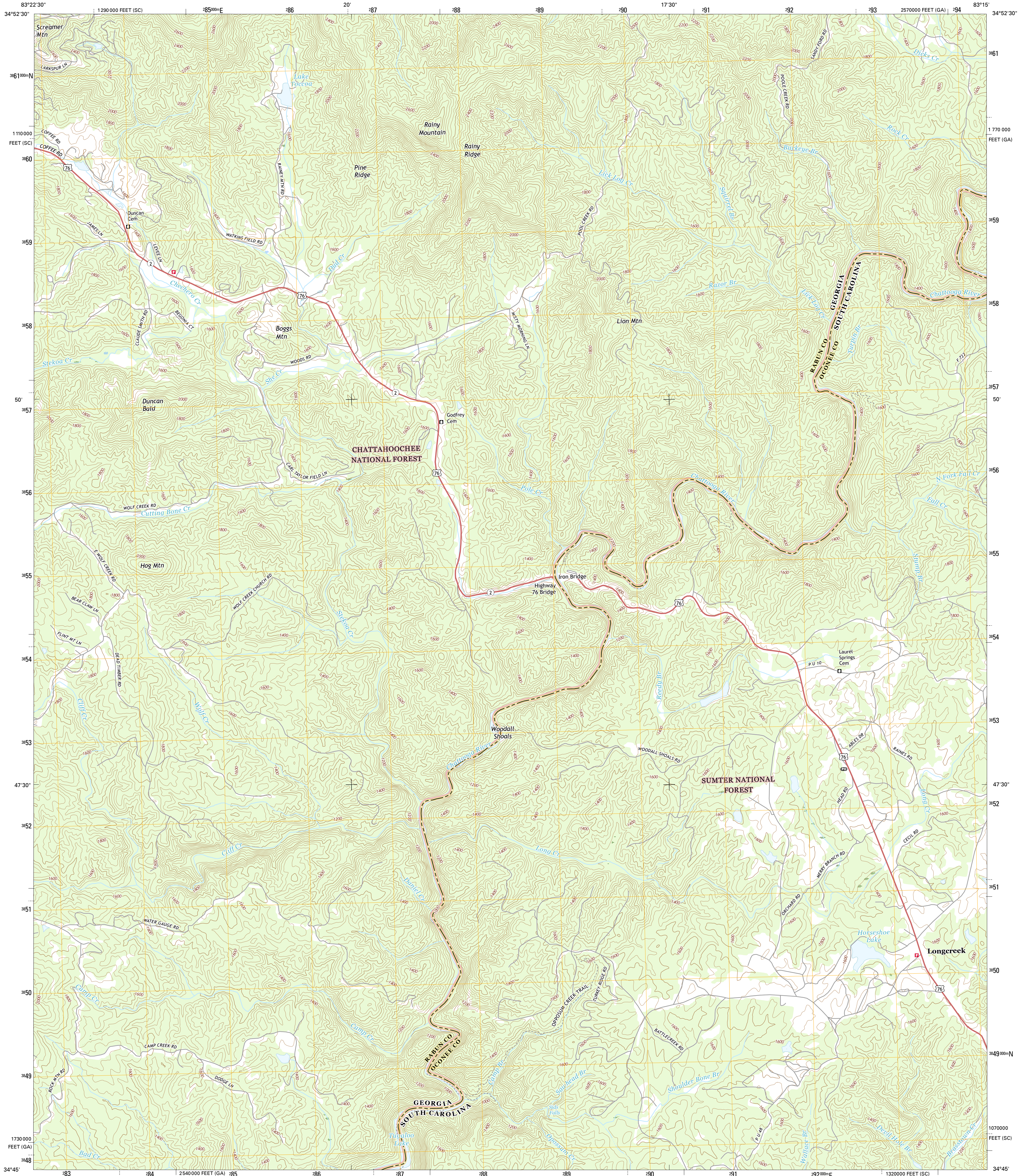




U.S. DEPARTMENT OF THE INTERIOR
U.S. GEOLOGICAL SURVEY



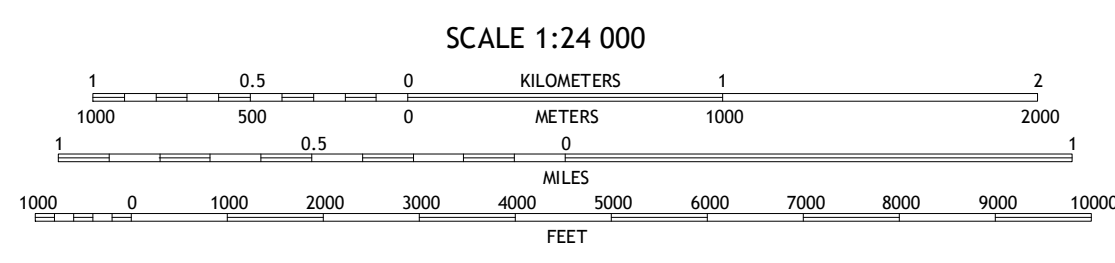
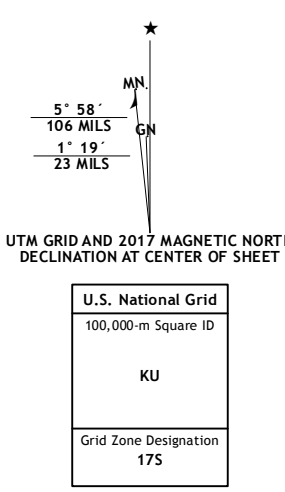
RAINY MOUNTAIN QUADRANGLE
GEORGIA-SOUTH CAROLINA
7.5-MINUTE SERIES



Produced by the United States Geological Survey
North American Datum of 1983 (NAD83)
World Geodetic System of 1984 (WGS84). Projection and
1 000-meter grid: Universal Transverse Mercator, Zone 17S
10 000-foot ticks: Georgia Coordinate System of 1983 (west
zone), South Carolina Coordinate System of 1983

This map is not a legal document. Boundaries may be
generalized for this map scale. Private lands within government
reservations may not be shown. Obtain permission before
entering private lands.

Imagery.....N.A.I.P., December 2015
Roads.....U.S. Census Bureau, 2015 - 2016
Roads within US Forest Service Lands.....FSTopo Data
with limited Forest Service updates, 2012 - 2016
Names.....GNIS, 2016
Hydrography.....National Hydrography Dataset, 2015
Contours.....National Elevation Dataset, 2011
Boundaries.....Multiple sources; see metadata file 1972 - 2016
Wetlands.....FWS National Wetlands Inventory 1977 - 2014



CONTOUR INTERVAL 40 FEET
NORTH AMERICAN VERTICAL DATUM OF 1988

This map was produced to conform with the
National Geospatial Program US Topo Product Standard, 2011.
A metadata file associated with this product is draft version 0.6.19



QUADRANGLE LOCATION

1	2	3
4	5	6
7	8	

ADJOINING QUADRANGLES

- Dillard
- Rabun Bald
- Satolah
- Tiger
- Whetstone
- Tallulah Falls
- Tugalo Lake
- Holly Springs

- ROAD CLASSIFICATION
- Expressway
 - Secondary Hwy
 - Ramp
 - FS Primary Route
 - Local Connector
 - Local Road
 - 4WD
 - US Route
 - FS Passenger Route
 - State Route
 - FS High Clearance Route

Check with local Forest Service unit
for current travel conditions and restrictions.

RAINY MOUNTAIN, GA-SC
2017



NSN 7540-01-000-1000
GSA GEN. REG. NO. 27
U.S. GPO: 2017-001-000-1000
NCA REF. NO. U.S.G.S.X