



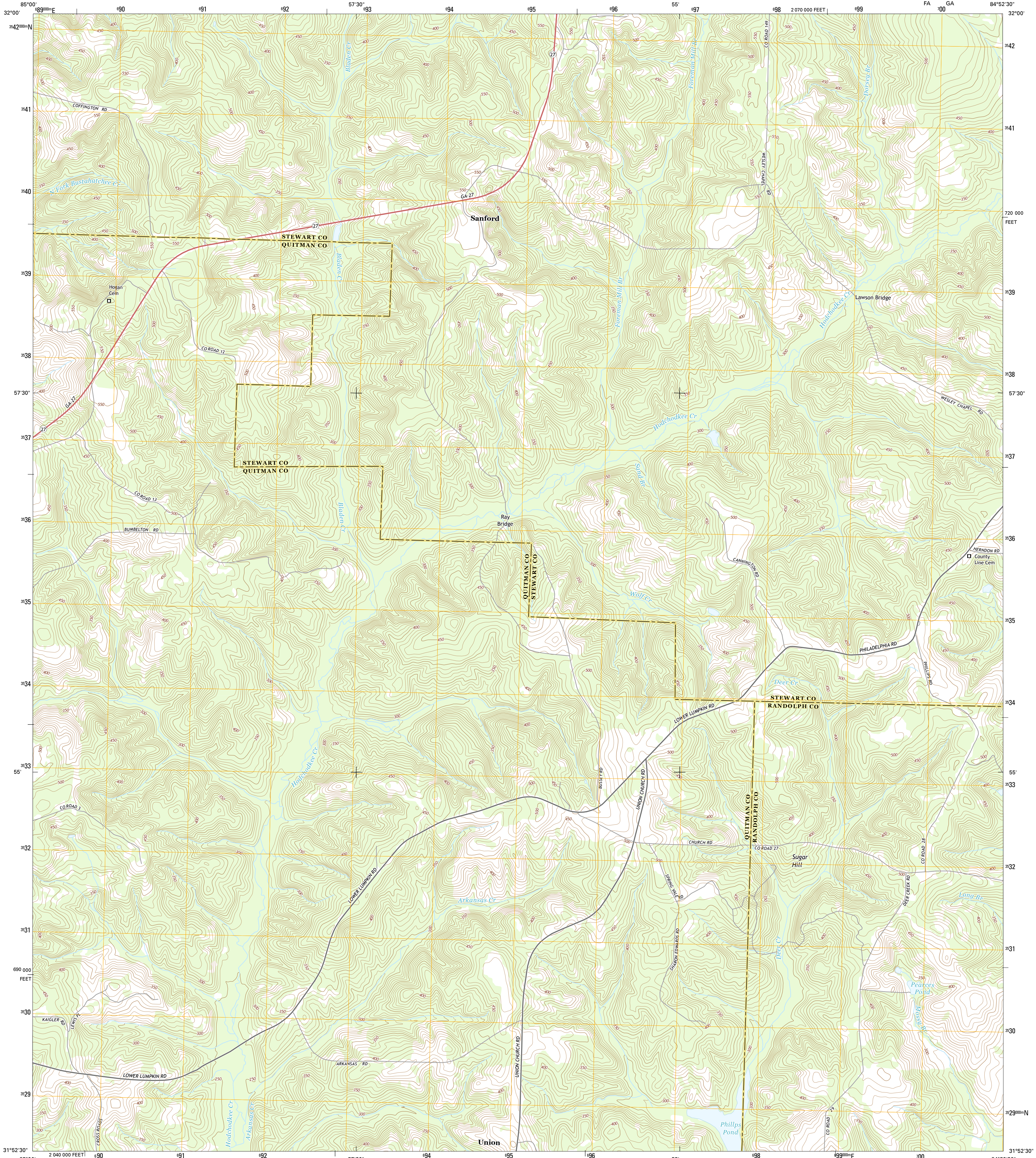
U.S. DEPARTMENT OF THE INTERIOR  
U.S. GEOLOGICAL SURVEY



SANFORD QUADRANGLE  
GEORGIA

7.5-MINUTE SERIES

FA 700 GA

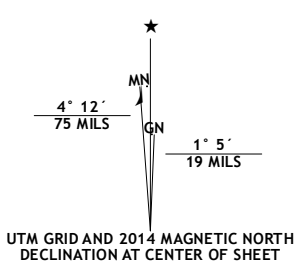


**Produced by the United States Geological Survey**

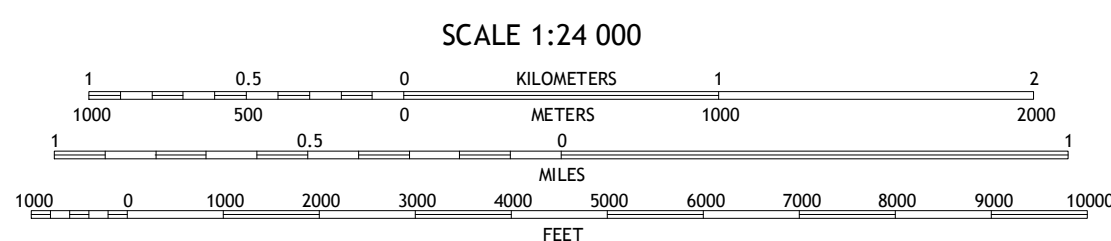
North American Datum of 1983 (NAD83)  
World Geodetic System of 1984 (WGS84) Projection and  
1 000-meter grid: Universal Transverse Mercator, Zone 16R  
10 000-foot ticks: Georgia Coordinate System of 1983 (west zone)

This map is not a legal document. Boundaries may be generalized for this map scale. Private lands within government reservations may not be shown. Obtain permission before entering private lands.

Imagery.....NAIP, September 2010  
Roads.....HERE, ©2013  
Names.....GNIS, 2013  
Hydrography.....National Hydrography Dataset, 2010  
Contours.....National Elevation Dataset, 2008  
Boundaries.....Multiple sources; see metadata file 1972 - 2013



U.S. National Grid	
100,000-m Square ID	700
FA GA	700
Grid Zone Designation	16R



CONTOUR INTERVAL 10 FEET  
NORTH AMERICAN VERTICAL DATUM OF 1988  
This map was produced to conform with the National Geospatial Program US Topo Product Standard, 2011. A metadata file associated with this product is draft version 0.6.16



QUADRANGLE LOCATION

FA	GA	ROAD CLASSIFICATION
		Expressway
		Secondary Hwy
		Ramp
		Local Connector
		Local Road
		4WD
		Interstate Route
		US Route
		State Route

1	2	3
4	5	6
7	8	9

ADJOINING QUADRANGLES

- 1 Twin Springs
- 2 Lumpkin SW
- 3 Lumpkin
- 4 Georgetown
- 5 County Line
- 6 Hatcher
- 7 Morris
- 8 Cutbert

SANFORD, GA  
2014

