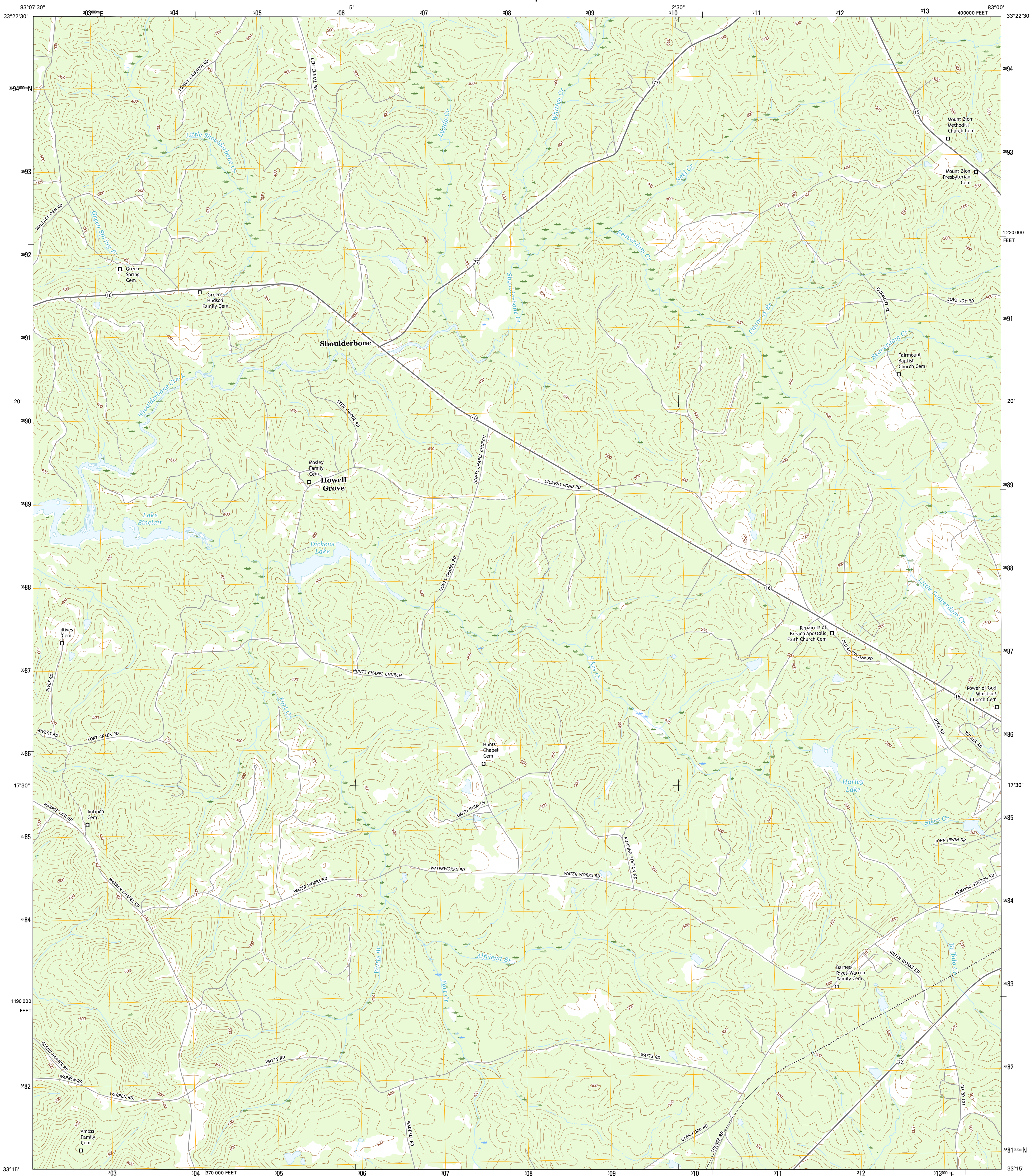




U.S. DEPARTMENT OF THE INTERIOR
U.S. GEOLOGICAL SURVEY



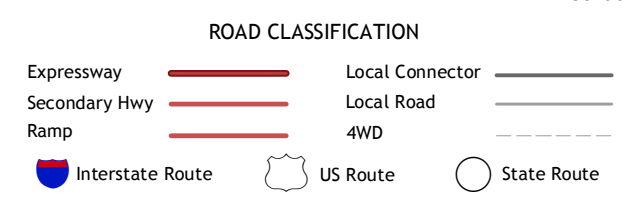
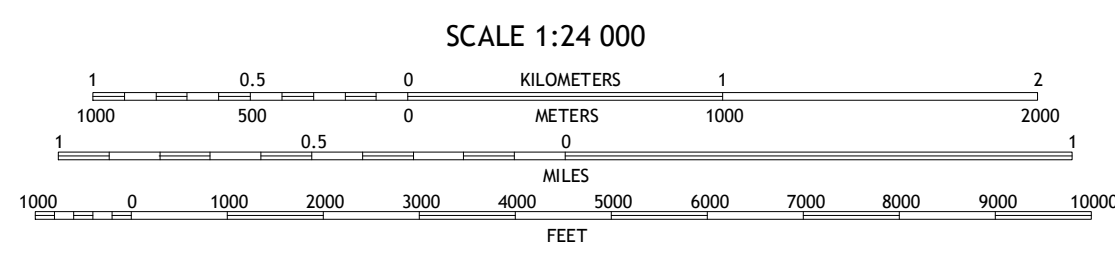
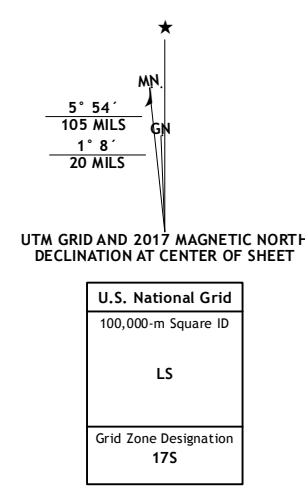
SHOULDERBONE QUADRANGLE
GEORGIA-HANCOCK CO.
7.5-MINUTE SERIES



Produced by the United States Geological Survey
North American Datum of 1983 (NAD83)
World Geodetic System of 1984 (WGS84). Projection and 1000-meter grid: Universal Transverse Mercator, Zone 17S
10 000-foot ticks: Georgia Coordinate System of 1983 (east zone)

This map is not a legal document. Boundaries may be generalized for this map scale. Private lands within government reservations may not be shown. Obtain permission before entering private lands.

Imagery: N.A.I.P., December 2015
Roads: U.S. Census Bureau, 2015 - 2016
Names: G.N.I.S., 2016
Hydrography: National Hydrography Dataset, 2015
Contours: National Elevation Dataset, 2008
Boundaries: Multiple sources; see metadata file 1972 - 2016
Wetlands: FWS National Wetlands Inventory 1977 - 2014



ADJOINING QUADRANGLES

1	2	3
4	5	6
7	8	

1 Liberty
2 White Plains
3 Sparta NW
4 Rockville
5 Sparta
6 Lake Sinclair East
7 Deveroux
8 Warthen NW

CONTOUR INTERVAL 20 FEET
NORTH AMERICAN VERTICAL DATUM OF 1988

This map was produced to conform with the National Geospatial Program US Topo Product Standard, 2011. A metadata file associated with this product is draft version 0.6.19

SHOULDERBONE, GA
2017

