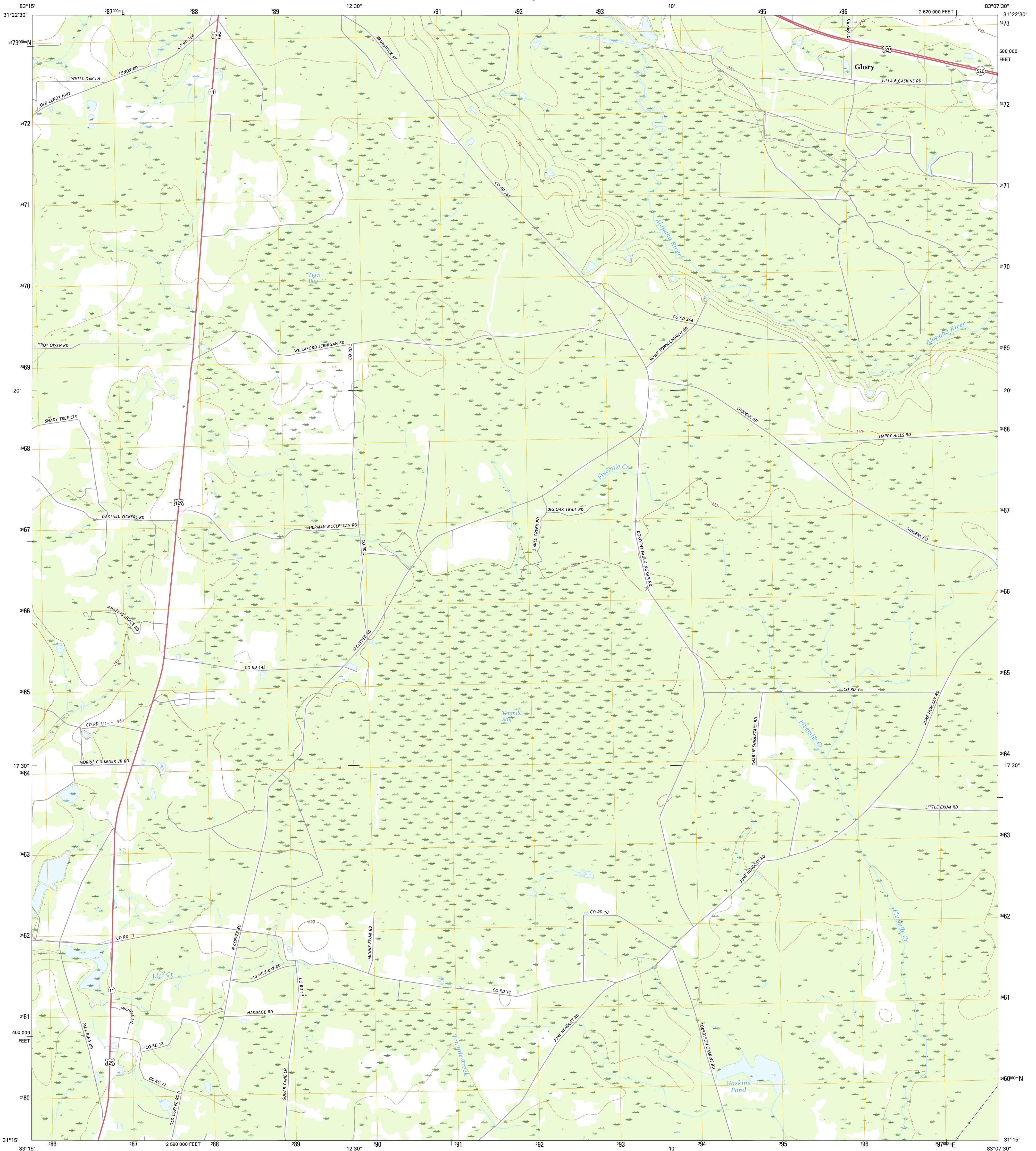




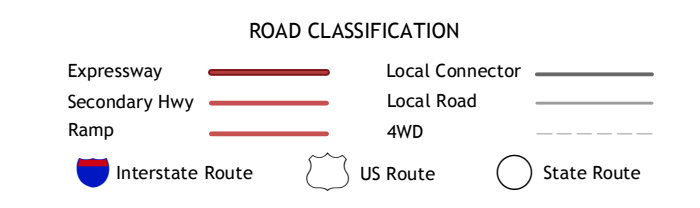
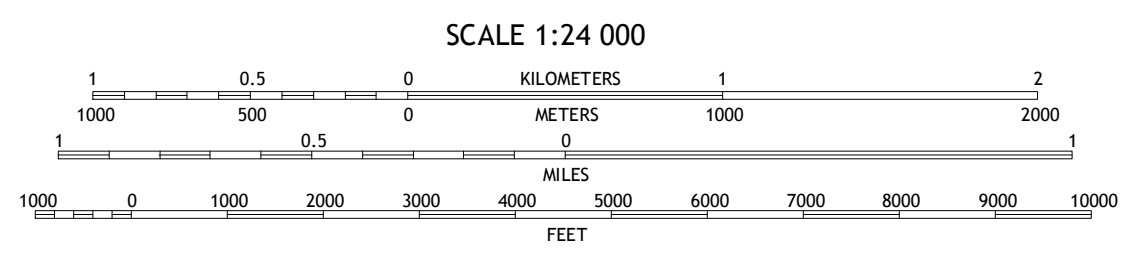
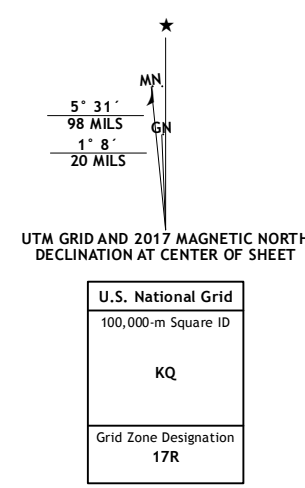
U.S. DEPARTMENT OF THE INTERIOR
U.S. GEOLOGICAL SURVEY



TENMILE BAY QUADRANGLE
GEORGIA-BERRIEN CO.
7.5-MINUTE SERIES



Produced by the United States Geological Survey
North American Datum of 1983 (NAD83)
World Geodetic System of 1984 (WGS84), Projection and
1 000-meter grid: Universal Transverse Mercator, Zone 17R
10 000-foot ticks: Georgia Coordinate System of 1983 (west
zone)
This map is not a legal document. Boundaries may be
generalized for this map scale. Private lands within government
reservations may not be shown. Obtain permission before
entering private lands.
Imagery.....MAP, December 2015
Roads.....U.S. Census Bureau, 2015-2016
Names.....GNIS, 2016
Hydrography.....National Hydrography Dataset, 2015
Contours.....National Elevation Dataset, 2008
Boundaries.....Multiple sources; see metadata file 1972-2016
Wetlands.....FWS National Wetlands Inventory 1977-2014



CONTOUR INTERVAL 10 FEET
NORTH AMERICAN VERTICAL DATUM OF 1988
This map was produced to conform with the
National Geospatial Program US Topo Product Standard, 2011.
A metadata file associated with this product is draft version 0.6.19

ADJOINING QUADRANGLES

1	2	3
4	5	6
7	8	

1 Enigma
2 Alapaha
3 Lark
4 Sapps Lake
5 Willacoochee
6 Nashville West
7 Nashville East
8 Hastings Fish Pond

TENMILE BAY, GA
2017

