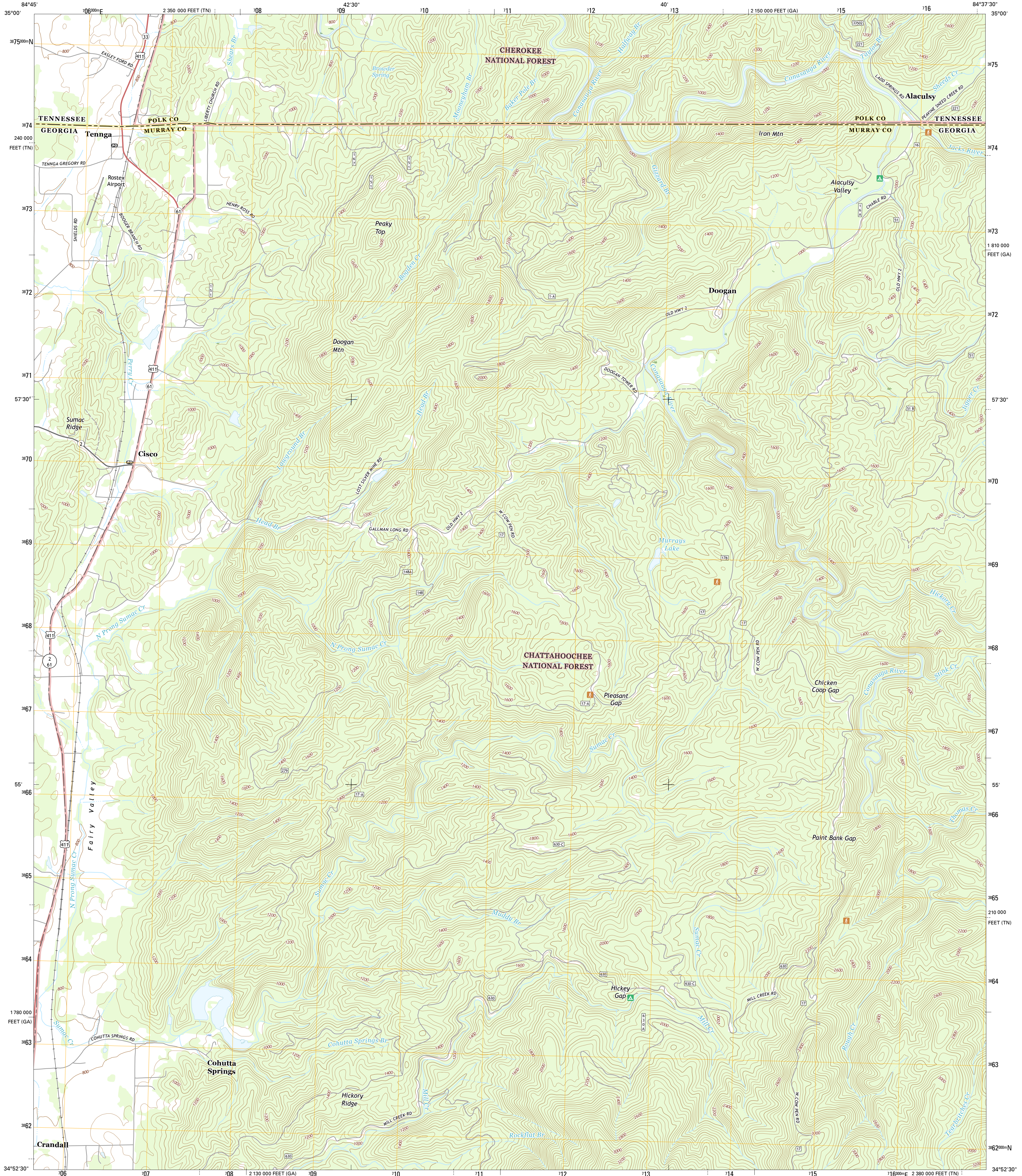




U.S. DEPARTMENT OF THE INTERIOR
U.S. GEOLOGICAL SURVEY



TENNGA QUADRANGLE
GEORGIA-TENNESSEE
7.5-MINUTE SERIES

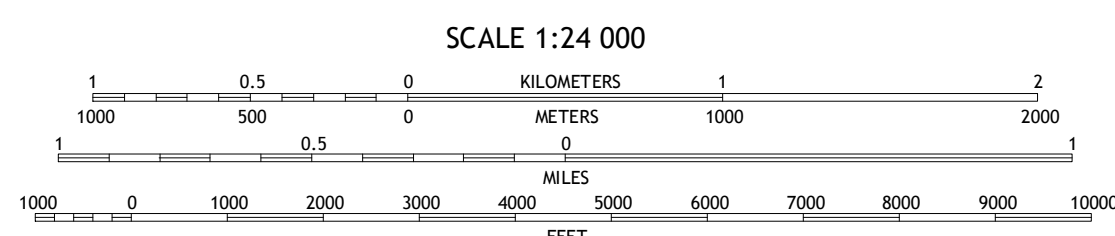
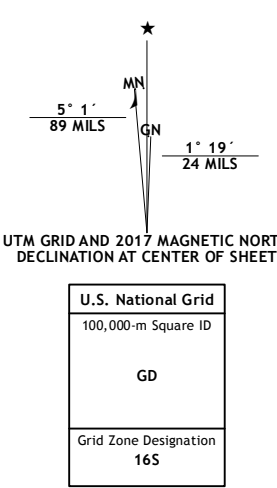


Produced by the United States Geological Survey

North American Datum of 1983 (NAD83)
World Geodetic System of 1984 (WGS84) Projection and
1 000-meter grid: Universal Transverse Mercator, Zone 16S
10 000-foot ticks: Georgia Coordinate System of 1983 (west
zone), Tennessee Coordinate System of 1983

This map is not a legal document. Boundaries may be
generalized for this map scale. Private lands within government
reservations may not be shown. Obtain permission before
entering private lands.

Imagery.....N.A.I.P., December 2015
Roads.....U.S. Census Bureau, 2015 - 2016
Roads within US Forest Service Lands.....FS Topo Data
with limited Forest Service updates, 2012 - 2016
Names.....GNIS, 2016
Hydrography.....National Hydrography Dataset, 2015
Contours.....National Elevation Dataset, 2001
Boundaries.....Multiple sources; see metadata file 1972 - 2016
Wetlands.....FWS National Wetlands Inventory 1977 - 2014



SCALE 1:24 000

CONTOUR INTERVAL 40 FEET
NORTH AMERICAN VERTICAL DATUM OF 1988

This map was produced to conform with the
National Geospatial Program US Topo Product Standard, 2011.
A metadata file associated with this product is draft version 0.6.19



QUADRANGLE LOCATION

1	2	3
4	5	6
7	8	

- 1 Felker
- 2 Parkville
- 3 Caney Creek
- 4 Beaverdale
- 5 Hemp Top
- 6 Chatsworth
- 7 Crandall
- 8 Dyer Gap

- ROAD CLASSIFICATION**
- Expressway
 - Secondary Hwy
 - Ramp
 - Interstate Route
 - FS Primary Route
 - Local Connector
 - Local Road
 - 4WD
 - US Route
 - FS Passenger Route
 - State Route
 - FS High Clearance Route

Check with local Forest Service unit
for current travel conditions and restrictions.

TENNGA, GA-TN
2017

