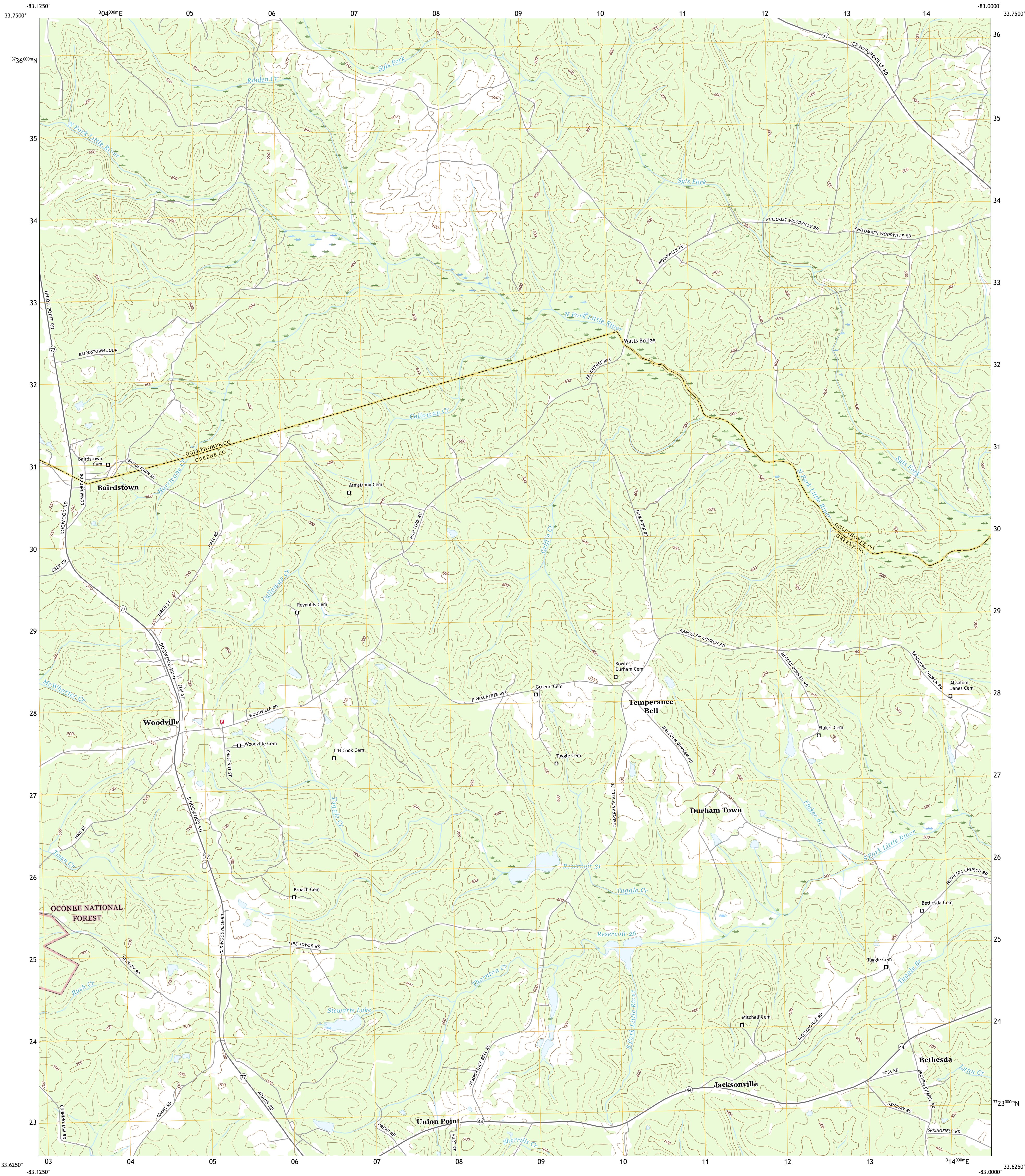




U.S. DEPARTMENT OF THE INTERIOR
U.S. GEOLOGICAL SURVEY



WOODVILLE QUADRANGLE
GEORGIA
7.5-MINUTE SERIES



Produced by the United States Geological Survey
North American Datum of 1983 (NAD83)
World Geodetic System of 1984 (WGS84). Projection and
1 000-meter grid: Universal Transverse Mercator, Zone 17S
This map is not a legal document. Boundaries may be
generalized for this map scale. Private lands within government
reservations may not be shown. Obtain permission before
entering private lands.

Imagery:.....NAIP, October 2017 - December 2017
Roads:.....2017
Roads within US Forest Service Lands:.....FSTopo Data
with limited Forest Service updates, 2017
Names:.....GNIS, 1979 - 2020
Hydrography:.....National Hydrography Dataset, 1998 - 2019
Contours:.....National Elevation Dataset, 1998 - 2009
Boundaries:.....Multiple sources; see metadata file 2018 - 2019
Wetlands:.....FWS National Wetlands Inventory Not Available

UTM GRID AND 2019 MAGNETIC NORTH
DECLINATION AT CENTER OF SHEET

U.S. National Grid
100,000 - m Square ID
LT
Grid Zone Designation
17S



CONTOUR INTERVAL 20 FEET
NORTH AMERICAN VERTICAL DATUM OF 1988
This map was produced to conform with the
National Geospatial Program US Topo Product Standard, 2011.
A metadata file associated with this product is draft version 0.6.18



1	2	3
4	5	6
7	8	9

ADJOINING QUADRANGLES

1 Maxey
2 Lexington
3 Rayle
4 Penfield
5 Philomath
6 Greensboro
7 Union Point
8 Crawfordville

ROAD CLASSIFICATION

Expressway
Secondary Hwy
Ramp
Interstate Route
FS Primary Route

Local Connector
Local Road
US Route
FS Passenger Route
FS High Clearance Route

State Route
Clearance Route

Check with local Forest Service unit
for current travel conditions and restrictions.

WOODVILLE, GA
2020

