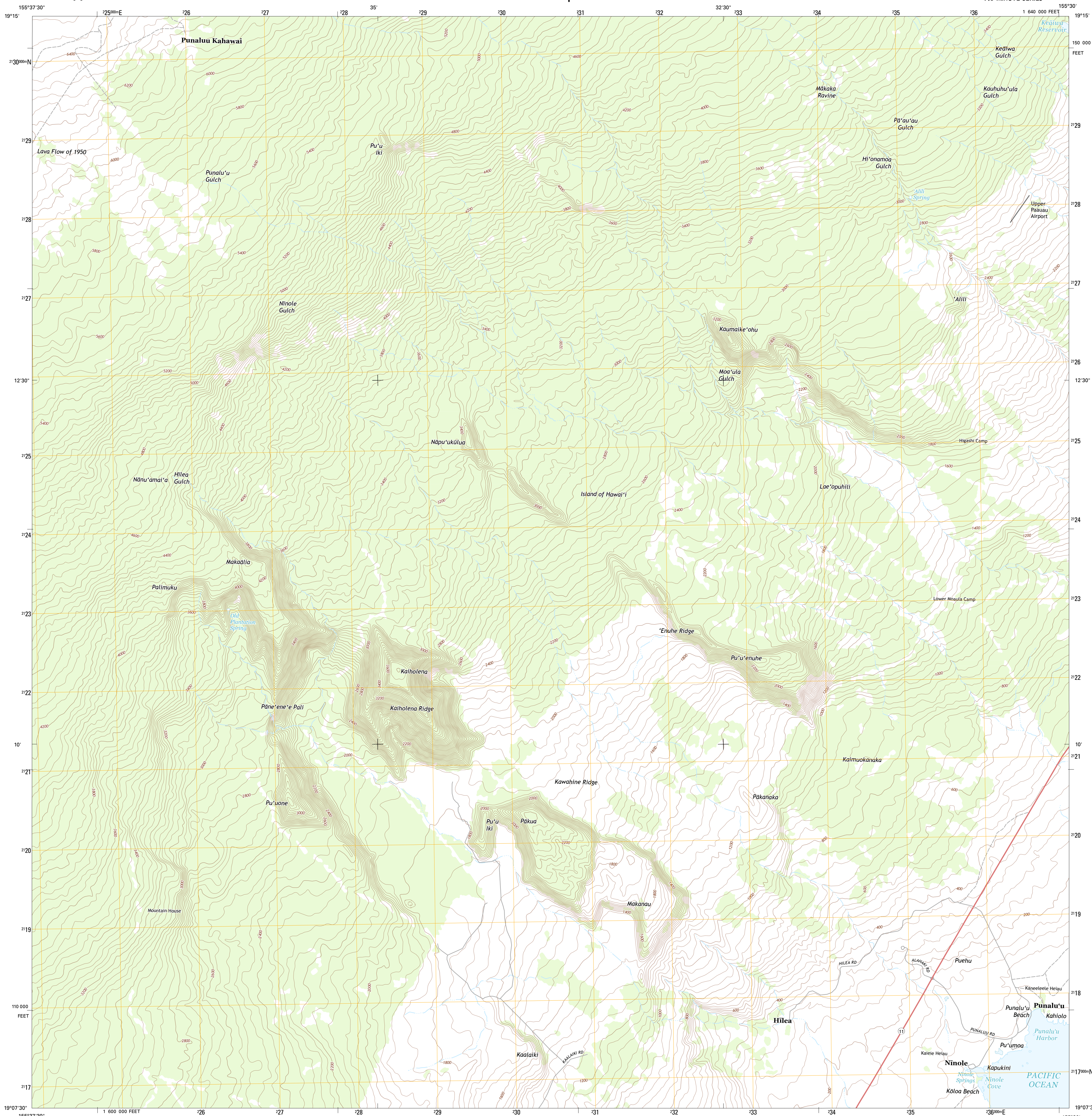




U.S. DEPARTMENT OF THE INTERIOR
U. S. GEOLOGICAL SURVEY

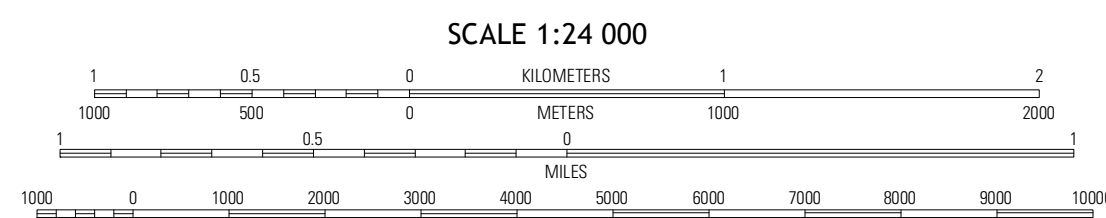
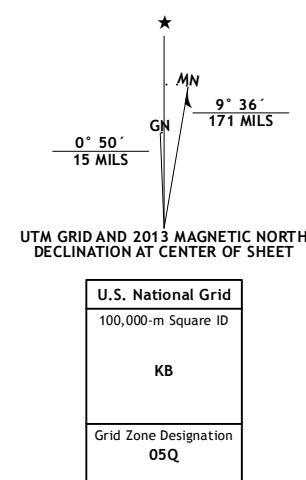


PUNALU'U QUADRANGLE
HAWAII-HAWAII CO.
7.5-MINUTE SERIES



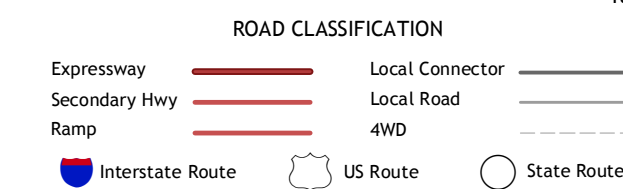
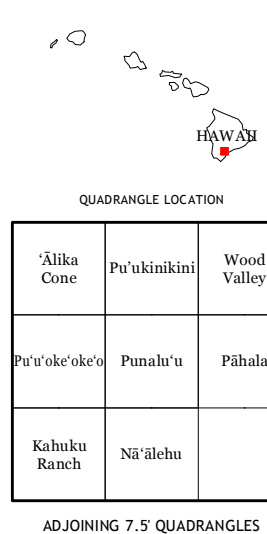
Produced by the United States Geological Survey
North American Datum of 1983 (NAD83)
World Geodetic System of 1984 (WGS84). Projection and
1 000-meter grid: Universal Transverse Mercator, Zone 19Q
10 000-foot ticks: Hawaii Coordinate System of 1983 (zone 1)

Imagery.....Digital Globe, ©January 2011
Roads.....©2006-2012 TomTom
Names.....GN5, 2012
Hydrography.....National Hydrography Dataset, 2011
Contours.....National Elevation Dataset, 2000
Boundaries.....Census, IBWC, IBC, USGS, 1972 - 2012



CONTOUR INTERVAL 40 FEET
DATUM IS LOCAL MEAN SEA LEVEL

This map was produced to conform with the
National Geospatial Program US Topo Product Standard, 2011.
A metadata file associated with this product is draft version 0.6.11



PUNALU'U, HI
2013

